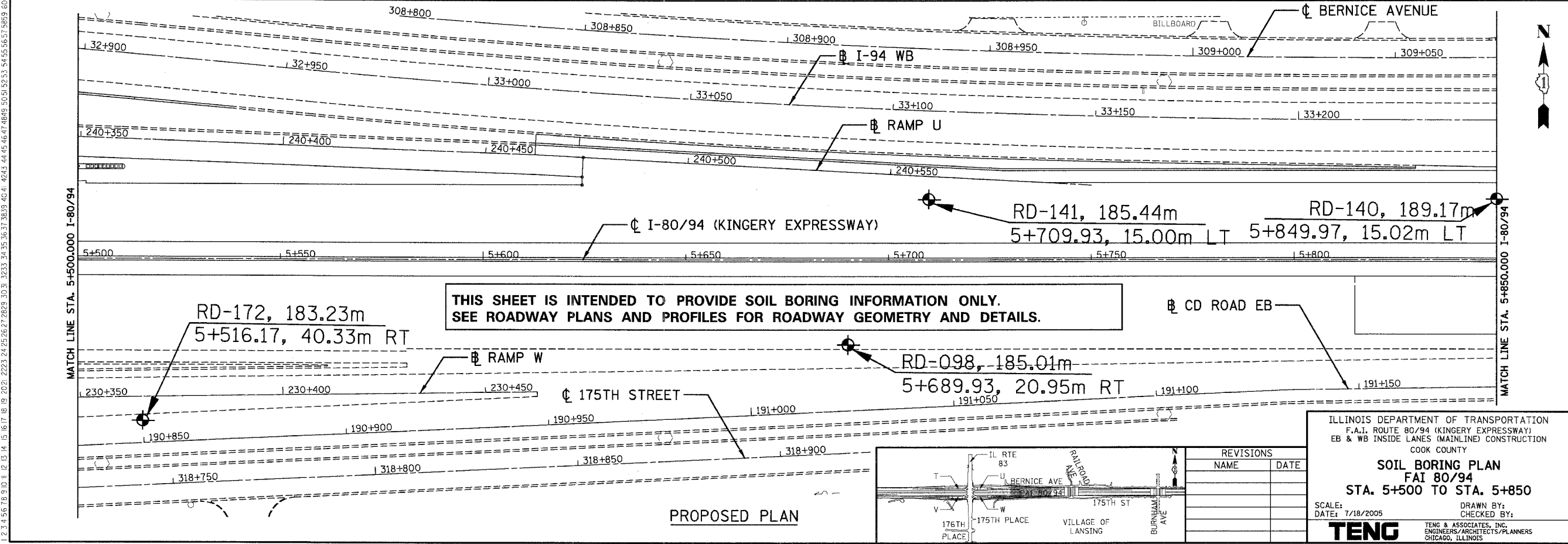
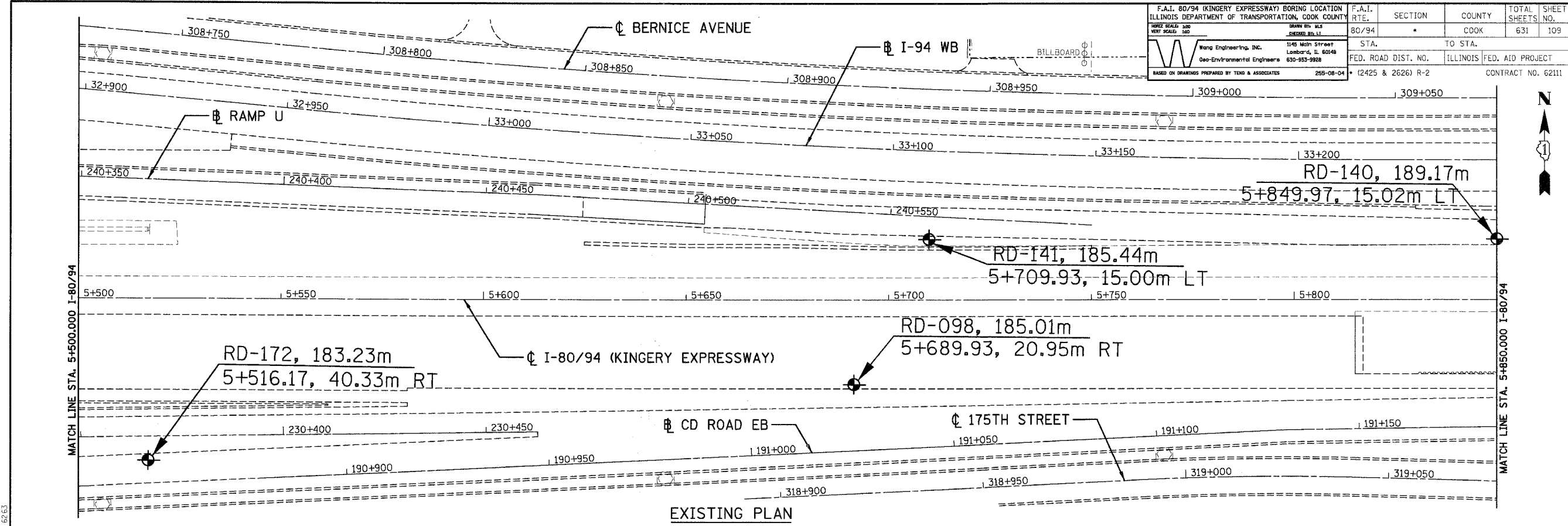
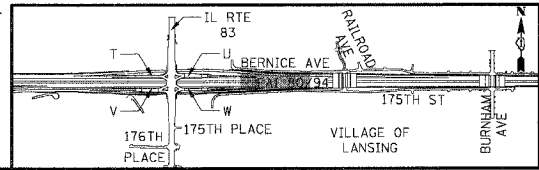


F.A.I. 80/94 (KINGERY EXPRESSWAY) BORING LOCATION ILLINOIS DEPARTMENT OF TRANSPORTATION, COOK COUNTY	F.A.I. RTE. 80/94	SECTION *	COUNTY COOK	TOTAL SHEETS 631	SHEET NO. 109
THREE SCALES: HORIZ. 1"=100' VERT. SCALE: 1"=10'	DESIGN BY: WES SHEPHERD, P.E.	STA. TO STA.	TO STA.	FED. ROAD DIST. NO.	ILLINOIS FED. AID PROJECT
Wang Engineering, Inc. Geo-Environmental Engineers 1145 North Street Lombard, IL 60148 630-953-9928	255-08-04	(2425 & 2626) R-2			CONTRACT NO. 62111
BASED ON DRAWINGS PREPARED BY TENG & ASSOCIATES					



**THIS SHEET IS INTENDED TO PROVIDE SOIL BORING INFORMATION ONLY.
SEE ROADWAY PLANS AND PROFILES FOR ROADWAY GEOMETRY AND DETAILS.**



REVISIONS	
NAME	DATE

ILLINOIS DEPARTMENT OF TRANSPORTATION
F.A.I. ROUTE 80/94 (KINGERY EXPRESSWAY)
EB & WB INSIDE LANES (MAINLINE) CONSTRUCTION
COOK COUNTY

SOIL BORING PLAN
FAI 80/94
STA. 5+500 TO STA. 5+850

SCALE: DATE: 7/18/2005
DRAWN BY: CHECKED BY:

TENG
TENG & ASSOCIATES, INC.
ENGINEERS/ARCHITECTS/PLANNERS
CHICAGO, ILLINOIS

.\\RE-5500_5850.DGN, .\\M899002A.DGN
 7-12-2005, 10:31:34
 T:\DOCUMENT\837\50\N\DWG\80170042C.DGN
 1 2 3 4 5 6 7 8 9 10 11 12 13 14 15 16 17 18 19 20 21 22 23 24 25 26 27 28 29 30 31 32 33 34 35 36 37 38 39 40 41 42 43 44 45 46 47 48 49 50 51 52 53 54 55 56 57 58 59 60 61 62 63