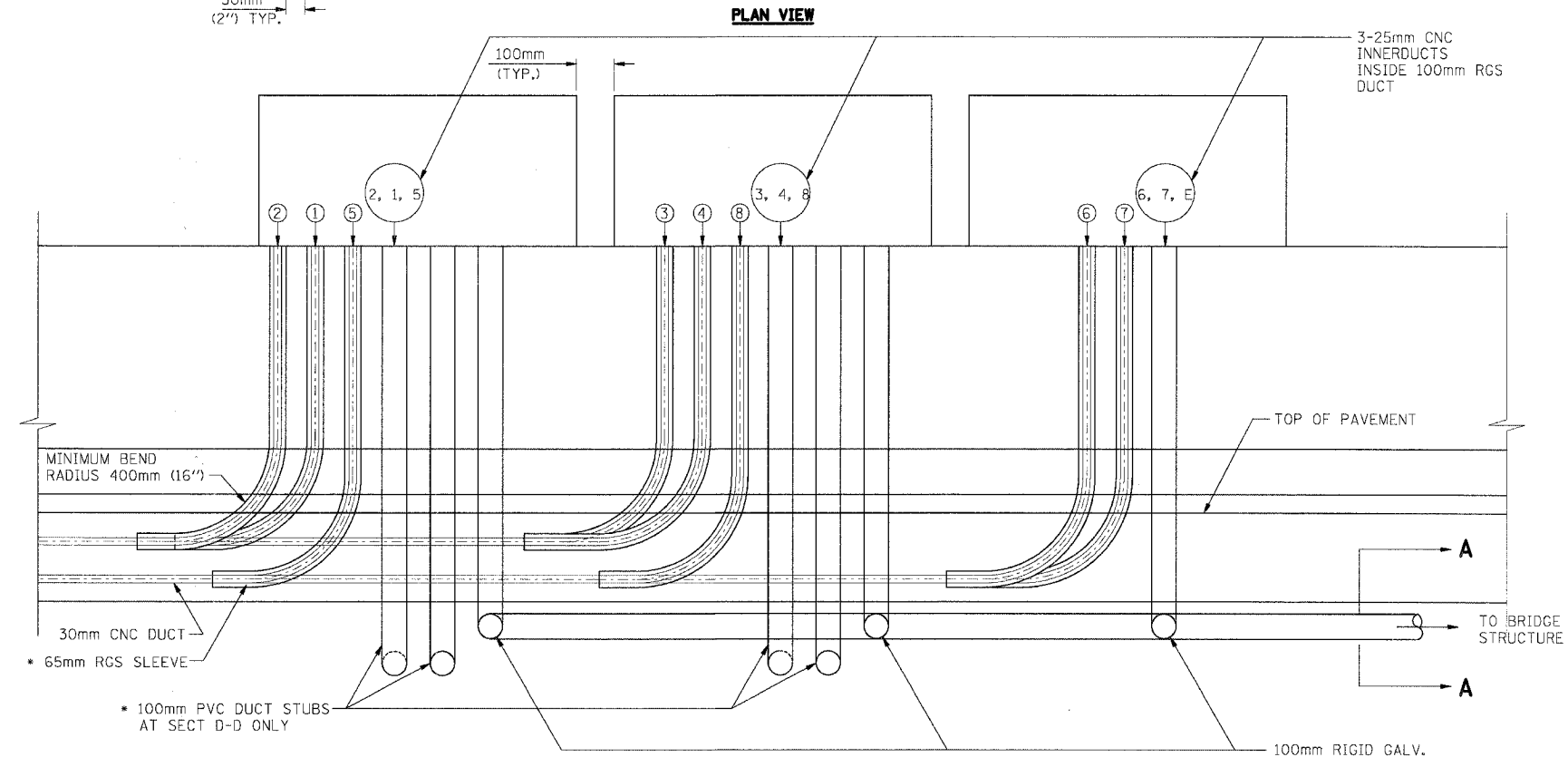
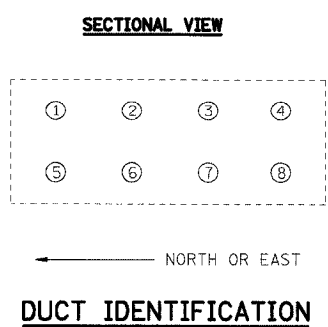
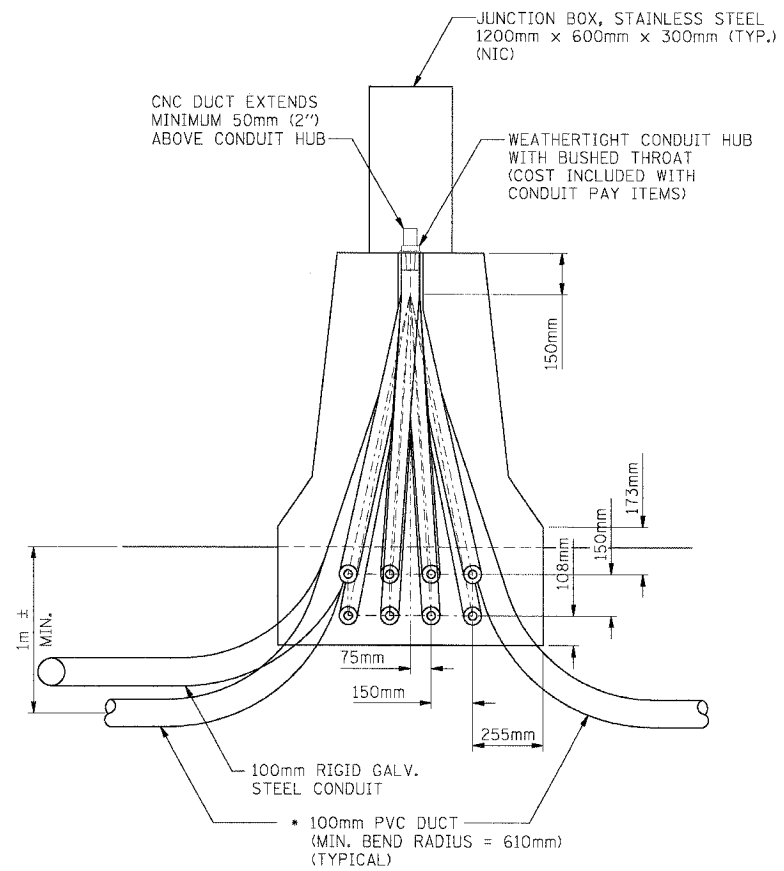
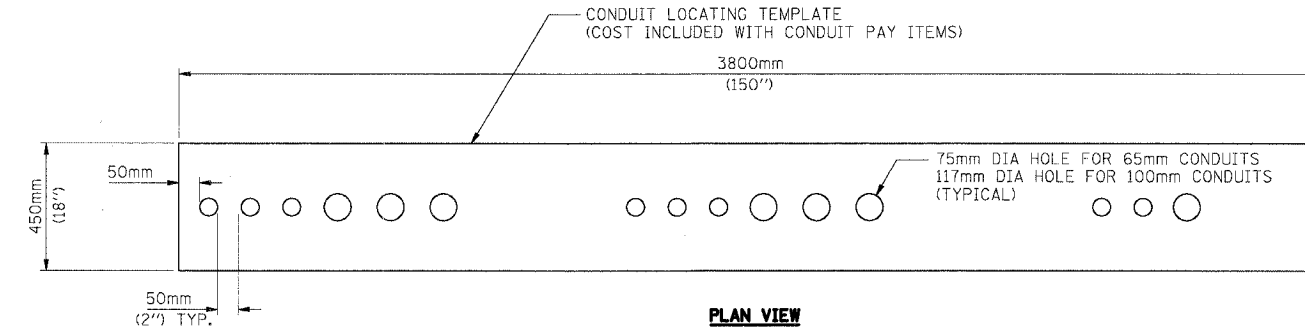
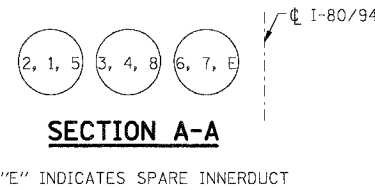


F.A.I. RTE.	SECTION	COUNTY	TOTAL SHEETS	SHEET NO.
80/94		COOK	631	299
STA.	TO STA.			
FED. ROAD DIST. NO.	ILLINOIS	FED. AID PROJECT		
		CONTRACT NO. 62111		



- PAID FOR AS CONDUIT EMBEDDED IN STRUCTURE OF SIZE AND TYPE SPECIFIED.
- PAID FOR AS CONDUIT-IN-TRENCH, 3-100mm DIA. RIGID GALVANIZED STEEL.

**ELEVATION D-D (AS SHOWN)**  
**ELEVATION D<sub>1</sub> - D<sub>1</sub> (OPP-HAND)**



REVISIONS	
NAME	DATE

**SHT. 12 OF 12**

ILLINOIS DEPARTMENT OF TRANSPORTATION  
F.A.I. ROUTE 80/94 (KINGERY EXPRESSWAY)  
EB & WB INSIDE LANES (MAINLINE) CONSTRUCTION  
COOK COUNTY

**ELECTRICAL RACEWAY PLANS  
DETAILS - V**

SCALE: NONE  
DATE: 8/22/05  
DRAWN BY: JFS  
CHECKED BY: VCP

**TENG** TENG & ASSOCIATES, INC.  
ENGINEERS/ARCHITECTS/PLANNERS  
CHICAGO, ILLINOIS

\A695002A.DGN  
 8-18-2005, 10:08:04  
 1, 2, 3, 4, 5, 6, 7, 8, 9, 10, 11, 12, 13, 14, 15, 16, 17, 18, 19, 20, 21, 22, 23, 24, 25, 26, 27, 28, 29, 30, 31, 32, 33, 34, 35, 36, 37, 38, 39, 40, 41, 42, 43, 44, 45, 46, 47, 48, 49, 50, 51, 52, 53, 54, 55, 56, 57, 58, 59, 60, 61, 62, 63  
 BAJZEKJ  
 T:\DOCUMENT\81750\CIVIL\NDR\NDR\09\9A.DGN