

PAV. DIST.	SEC.	COUNTY	TOTAL SHEETS	SHEET NO.
8964	*	COOK	881	388
TO STA.		TO STA.		

FIXTURE NOTES

LIGHTING FIXTURE SHALL BE FABRICATED OF 0.064" ALUMINUM SHEET AS PER SPECIFICATION A.5.7.1. B-288-59T-MA-NIN. THIS INCLUDES SUPPORT CLIPS, REFLECTOR TABS, NINGES AND LOCKING LATCH.

MACHINE SCREWS SHALL BE #8-32 WITH NUTS AND LOCK WASHER MADE OF ALUMINUM OR STAINLESS STEEL UNLESS NOTED.

OTHER METAL PARTS SHALL BE MADE OF BRONZE, BRASS, COPPER BERYLLIUM WITH MIN CORROSION FINISH WHEN NECESSARY.

REFLECTOR SHALL BE MADE OF .020" (MIN) ALUMINUM LIGHTING SHEET WITH SPECULAR FINISH AND SHALL BE 63" LONG.

REFLECTOR SHALL BE EASILY REMOVED FOR CLEANING, WITHOUT NEED FOR PERMANENT DISTORTION OF REFLECTOR SHAPE. THE REFLECTING SURFACE SHALL BE PERMANENTLY TREATED AND SEALED TO OBTAIN A REFLECTING VALUE OF 90% OR BETTER. THE REFLECTOR MUST WITHSTAND CONTINUOUS OPERATION AT A SERVICE TEMPERATURE OF 250°F WITHOUT LOSS OF PERFORMANCE OR PHYSICAL PROPERTIES. AFTER A 100 HOUR SALT SPRAY TEST AT 122°F WITH A 20% SALT SOLUTION REFLECTANCE AND SURFACE FINISH WILL BE UNCHANGED. TEST WITH 3 MINUTES OF SALT SPRAY 3 MINUTES OF AIR, REPEAT THROUGHOUT THE 100 HOUR DURATION.

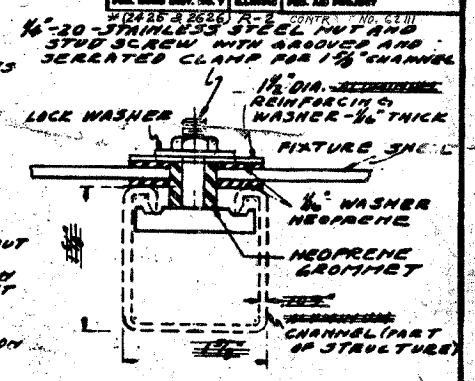
BALLAST SHALL BE RATED AT 200 MA, 240 VOLT AND DESIGNED FOR COLD WEATHER RELIABLE START "MCO" AT -40°F IN CONNECTION WITH RAPID START FLUORESCENT LAMPS 78 TIE-MO. (REF. (A) BELOW)

LAMPS TO BE MOUNTED IN FIXTURE WITHIN 1" OF GROUNDED METAL REFLECTOR WHICH IS FULL LENGTH OF LAMPS.

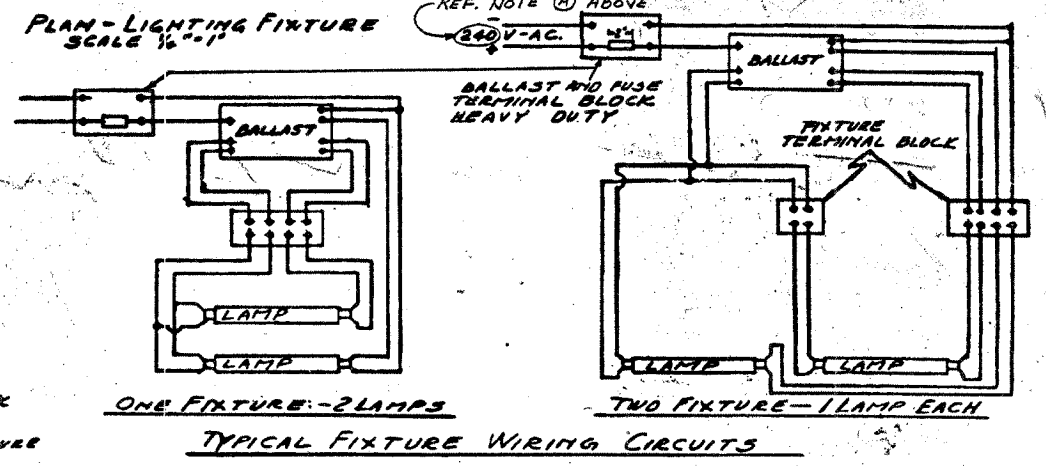
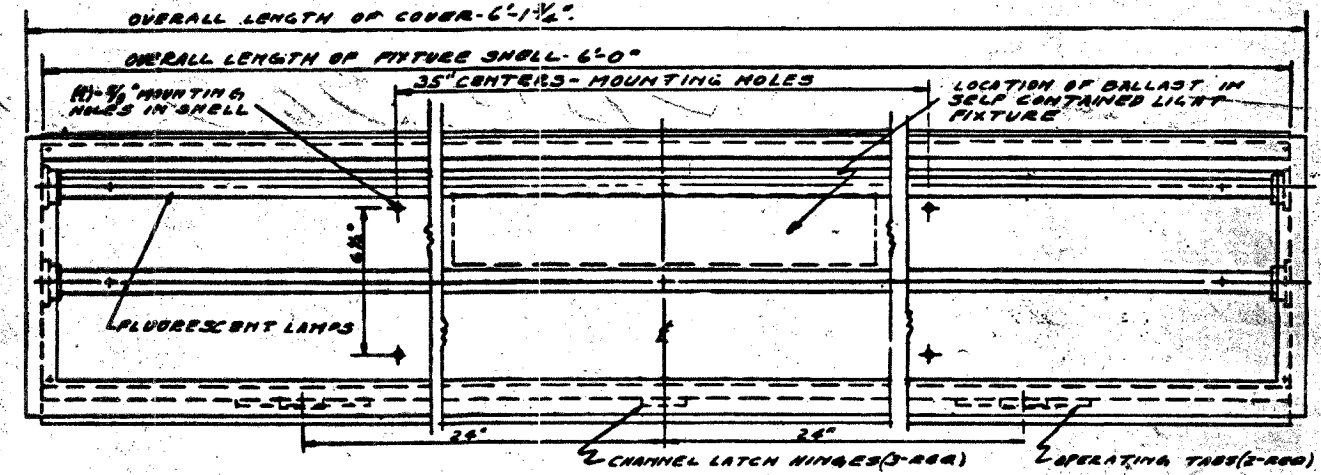
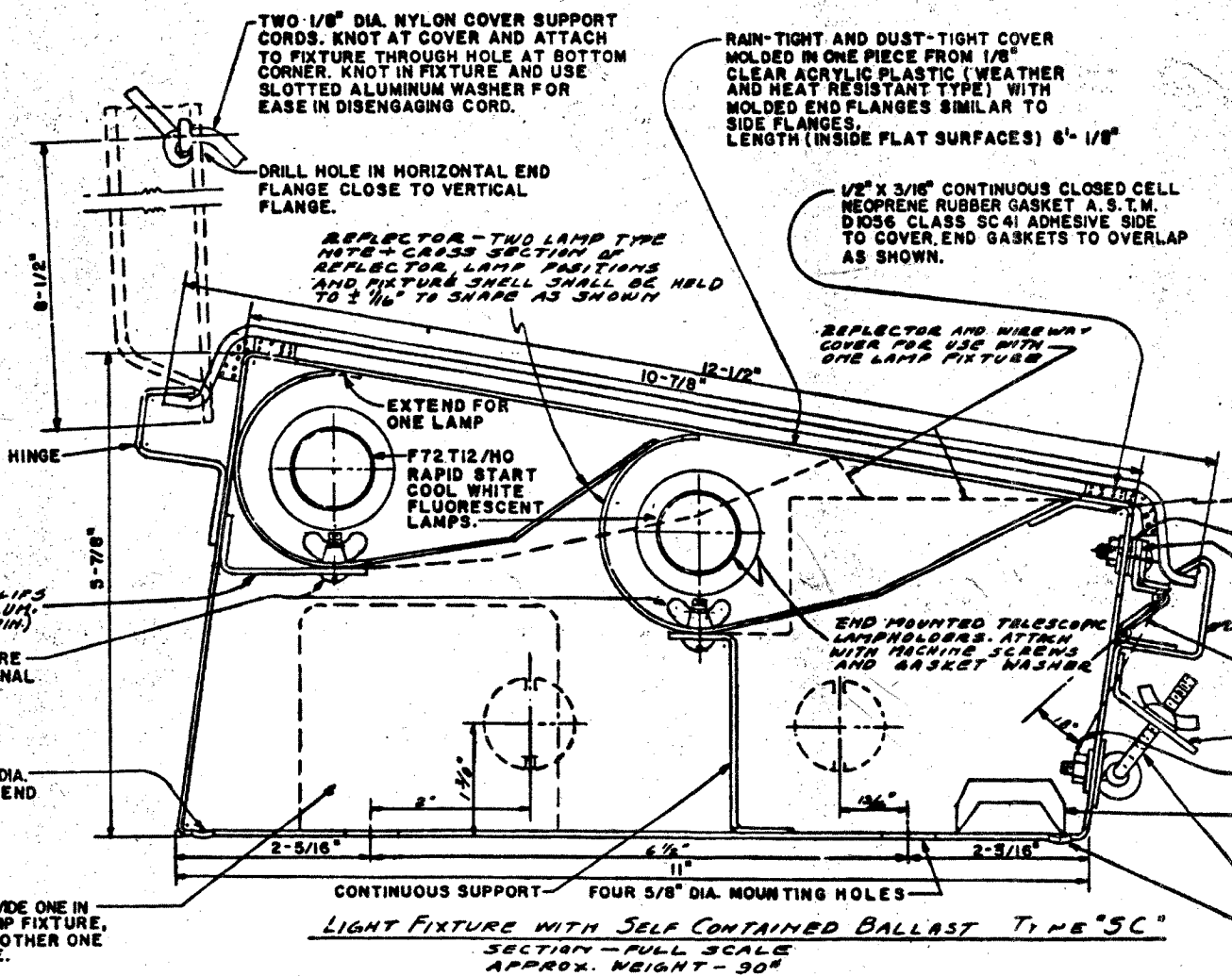
BALLAST AND TERMINAL BLOCKS SHALL BE MARKED WITH LEGIBLE SYMBOLS, CONDUCTORS SHALL BE TAGGED AND THEIR CORRESPONDING IDENTIFICATION MARKED ON THE TERMINAL BOARD.

THE CONTRACTOR SHALL AIM AND SPACE THE LIGHTING FIXTURE UNDER NIGHT CONDITIONS TO PROVIDE THE MOST ADVANTAGEOUS LIGHT DISTRIBUTION OVER THE SIGN SURFACE TO BE ILLUMINATED. FINAL AIMING OF THE FIXTURE SHALL BE APPROVED BY THE ENGINEER.

(A) THE CONTRACTOR SHALL VERIFY SYSTEM VOLTAGE.



FIXTURE MOUNT DETAIL
SCALE - FULL
FURNISH FOUR SETS OF MOUNTING HARDWARE AS SHOWN. ATTACH TO FIXTURE.



REVISIONS	
NAME	DATE
427	8-18-64
WGD	3-13-63

ILLINOIS DIVISION OF HIGHWAYS
FLUORESCENT SIGN LIGHTING FIXTURES
OS-6A
SCALE: HORIZ. VERT. DATE 3-8-60 DRAWN BY 427 CHECKED BY

FOR INFORMATION ONLY