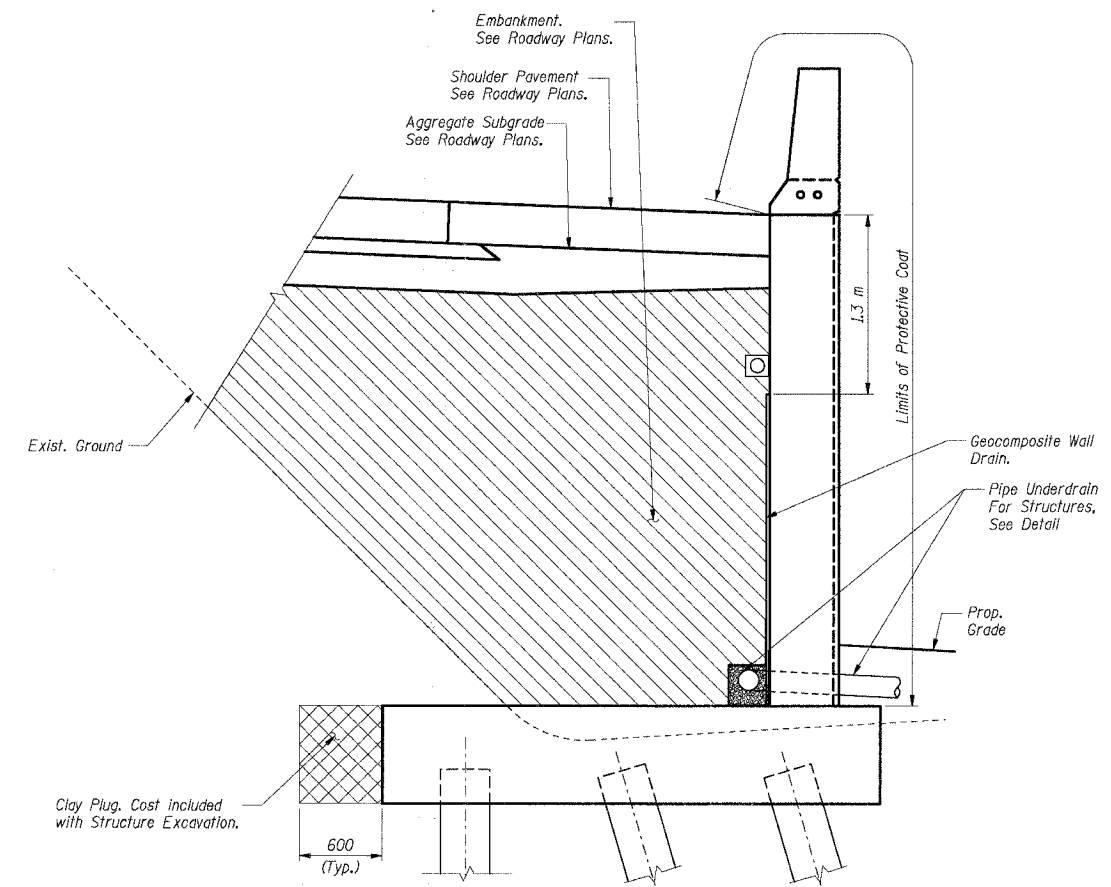


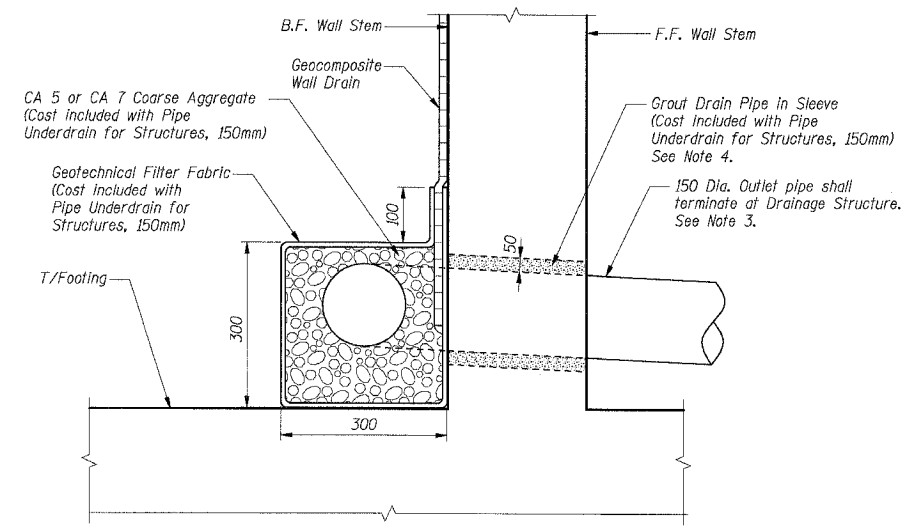
F.A.I. RTE.	SECTION	COUNTY	TOTAL SHEETS	SHEET NO.
80/94	*	COOK	631	353
STA.	TO STA.			
FED. ROAD DIST. NO.	ILLINOIS	FED. AID PROJECT		
* (2425 & 2626) R-2			CONTRACT NO. 62111	



Bar	A	B
n705(E)	260	1.37 m
n708(E)	260	1.67 m
n709(E)	400	2.05 m
n710(E)	400	1.52 m
n711(E)	320	1.52 m
1702(E)	400	4.70 m
1704(E)	500	5.90 m

Bar	A	B	C
n706(E)	400	2.35 m	190
n707(E)	500	2.35 m	190

TYPICAL WALL DRAINAGE SECTION AT TEMPORARY SOIL RETENTION SYSTEM



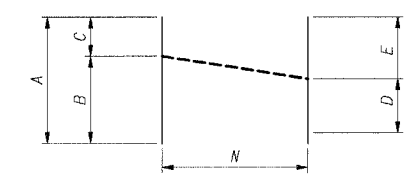
PIPE UNDERDRAIN FOR STRUCTURES DETAIL

PIPE UNDERDRAIN/DRAINAGE STRUCTURE CONNECTION TABLE

Pipe Underdrain Connection No.	Connection at Station	Drainage Structure No.
*** 1	83+028.00	3257
*** 2	83+081.50	3258
*** 3	83+133.50	3259
** 4	83+161.00	3260
** 5	83+214.00	3261
** 6	83+265.00	3262
** 7	83+317.00	3263
** 8	83+377.00	3264
** 9	83+438.50	3265
** 10	83+500.50	3266
** 11	83+544.00	3267
** 12	83+599.00	3268
** 13	83+658.00	3269
** 14	83+718.00	3270

** Not in Contract, By Others in Contract 62350
 *** Not in Contract, By Others in Contract 62110

- Notes:**
- All dimensions are in millimeters (mm) except as noted.
 - Reinforcement bars designated (E) shall be epoxy coated.
 - Outlet pipe and fittings shall be Extra Heavy Ductile Iron Pipe conforming to the requirements of ASTM A746 with plain end. (Cost included with Pipe Underdrain for Structures, 150mm).
 - Prior to the placement of the pipe underdrain sleeve, the Engineer shall determine the slope and fittings required for the pipe underdrain to enter the drainage structure.



Bar Cutting Diagram

Bar	N Bars	A	B	C	D	E
v887(E)	11	9.77 m	6.34 m	3.43 m	4.82 m	4.95 m
v888(E)	7	9.98 m	6.34 m	3.64 m	4.89 m	5.09 m
v889(E)	8	4.50 m	3.29 m	1.21 m	2.18 m	2.32 m
v890(E)	6	4.71 m	3.50 m	1.21 m	2.25 m	2.46 m
h712(E)	8	13.92 m	11.83 m	2.09 m	6.64 m	7.28 m
h721(E)	6	12.94 m	11.83 m	1.11 m	5.98 m	6.96 m

\A899002A.DGN, \RS067682A.DGN, \RS37682A.DGN BANZERKJ
 7-12-2005 10:24:49 T:\DOCUMENTS\PROJECTS\STRUCT\CON\8570872A.DGN
 12.3.4.5.6.7.8.9.10.11.12.13.14.15.16.17.18.19.20.21.22.23.24.25.26.27.28.29.30.31.32.33.34.35.36.37.38.39.40.41.42.43.44.45.46.47.48.49.50.51.52.53.54.55.56.57.58.59.60.61.62.63

SHT. RW850-48 OF 58

REVISIONS	
NAME	DATE

*** 2001-167R, (2425 & 2626) R-1 AND (2425 & 2626) R-2

ILLINOIS DEPARTMENT OF TRANSPORTATION
 F.A.I. ROUTE 80/94 (KINGERY EXPRESSWAY)
 EB & WB INSIDE LANES (MAINLINE) CONSTRUCTION
 RETAINING WALL - STRUCTURE NO. 016-W850
 SECTIONS ***
 COOK COUNTY

DRAINAGE DETAILS & WALL REINFORCEMENT DETAILS

DATE: 7/18/2005
 DRAWN BY: CHECKED BY: MJK
TENG
 TENG & ASSOCIATES, INC.
 ENGINEERS/ARCHITECTS/PLANNERS
 CHICAGO, ILLINOIS