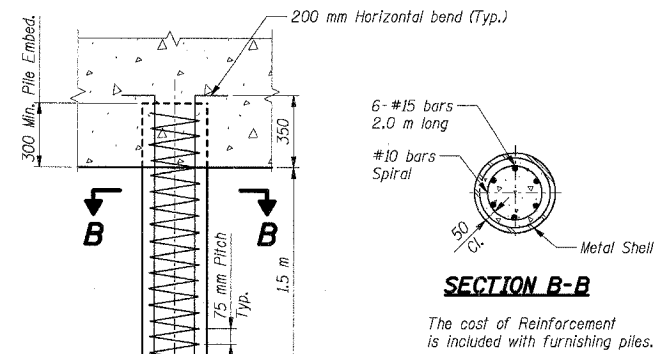
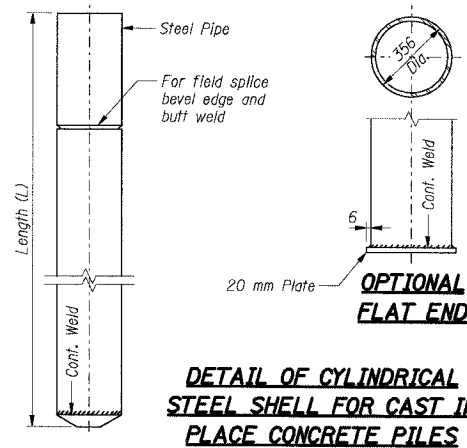
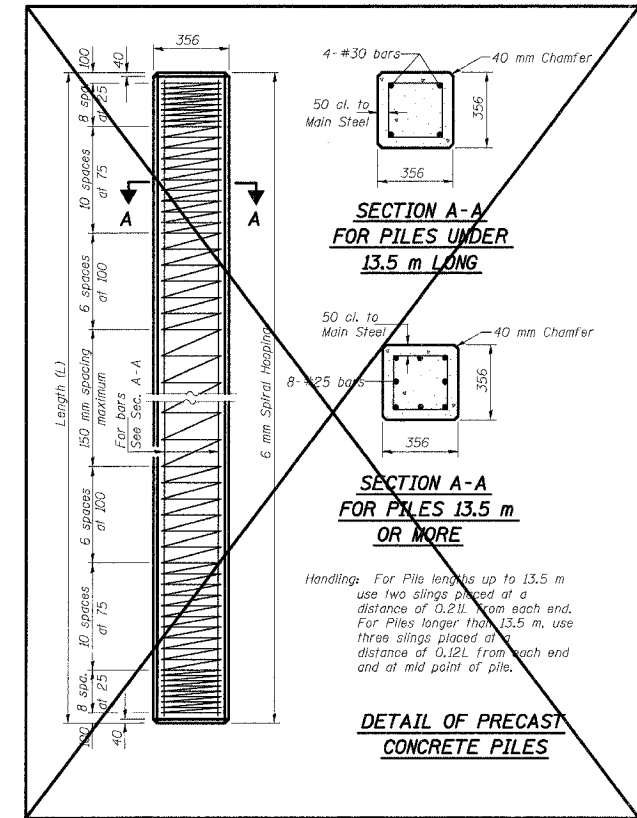


F.A.I. RTE.	SECTION	COUNTY	TOTAL SHEETS	SHEET NO.
80/94	*	COOK	631	371
STA.	TO STA.			
FED. ROAD DIST. NO.	ILLINOIS	FED. AID PROJECT		
* (2425 & 2626) R-2		CONTRACT NO. 62111		

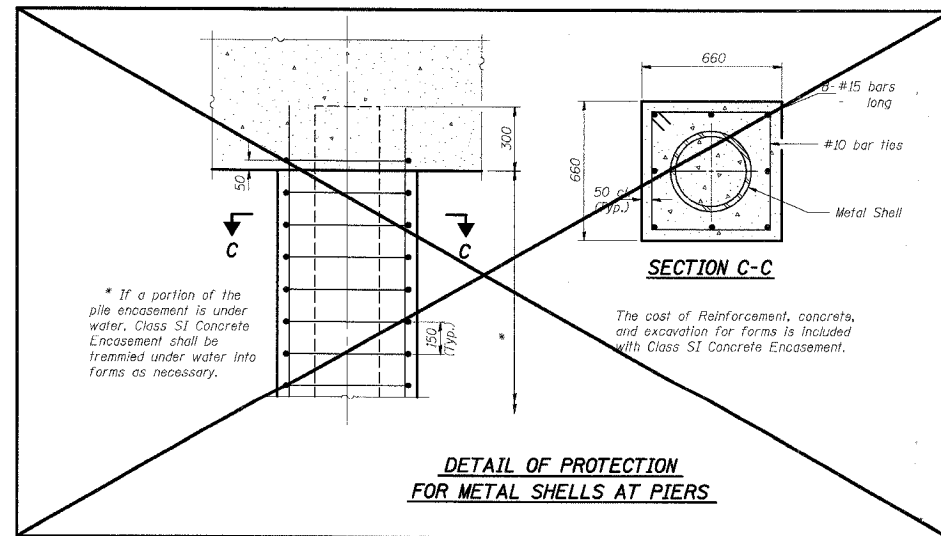
Notes: Driving and bearing ends shall be cut square. The thickness of the shell shall be 6.35 mm with a tolerance of 5%. The shell shall be according to Article 1006.05(a) of the Standard Specifications.



**DETAIL OF REINFORCEMENT FOR METAL SHELLS AT ABUTMENTS**



**DETAIL OF PRECAST CONCRETE PILES**



**DETAIL OF PROTECTION FOR METAL SHELLS AT PIERS**

- Notes:
- All dimensions are in millimeters (mm) except as noted.
  - Reinforcement bars designated (E) shall be epoxy coated.

SHT. RW851-13 OF 14

REVISIONS	
NAME	DATE

ILLINOIS DEPARTMENT OF TRANSPORTATION  
F.A.I. ROUTE 80/94 (KINGERY EXPRESSWAY)  
EB & WB INSIDE LANES (MAINLINE) CONSTRUCTION  
RETAINING WALL - STRUCTURE NO. 016-W851  
SECTION (2425 & 2626) R-2  
COOK COUNTY

PILE DETAILS

DATE: 7/18/2005

DRAWN BY: CHECKED BY: MJK



\RS99052A.DGN, \MB99002A.DGN, \BAZTEKJ  
 7-2-2005, 10:25:17  
 T:\DOCUMENT\89750\STRUCT\CON\RS17172A.DGN  
 12 13 14 15 16 17 18 19 20 21 22 23 24 25 26 27 28 29 30 31 32 33 34 35 36 37 38 39 40 41 42 43 44 45 46 47 48 49 50 51 52 53 54 55 56 57 58 59 60 61 62 63