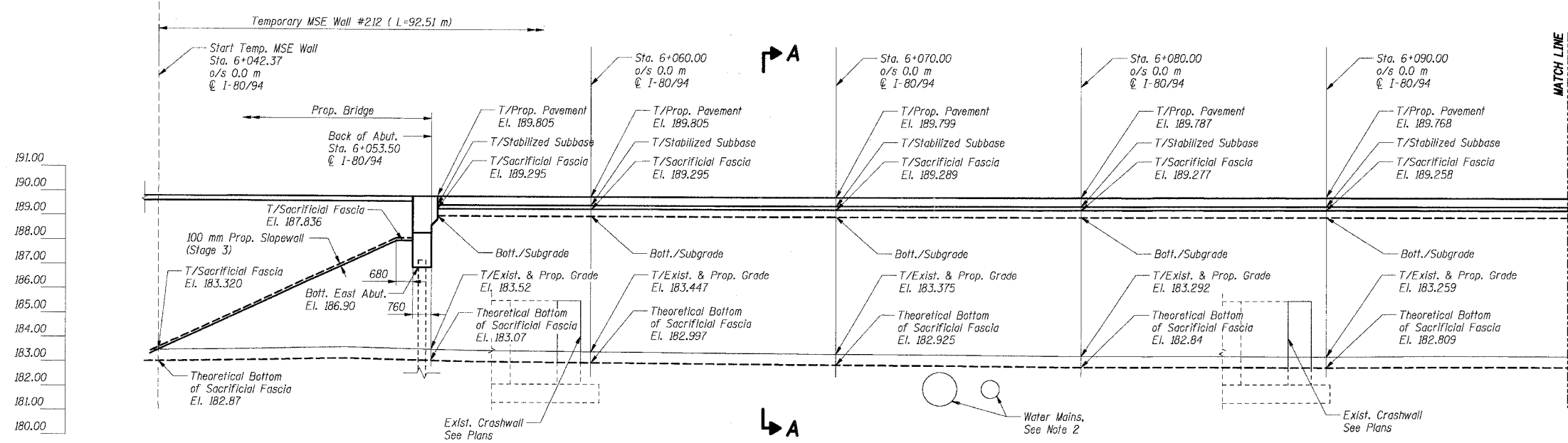
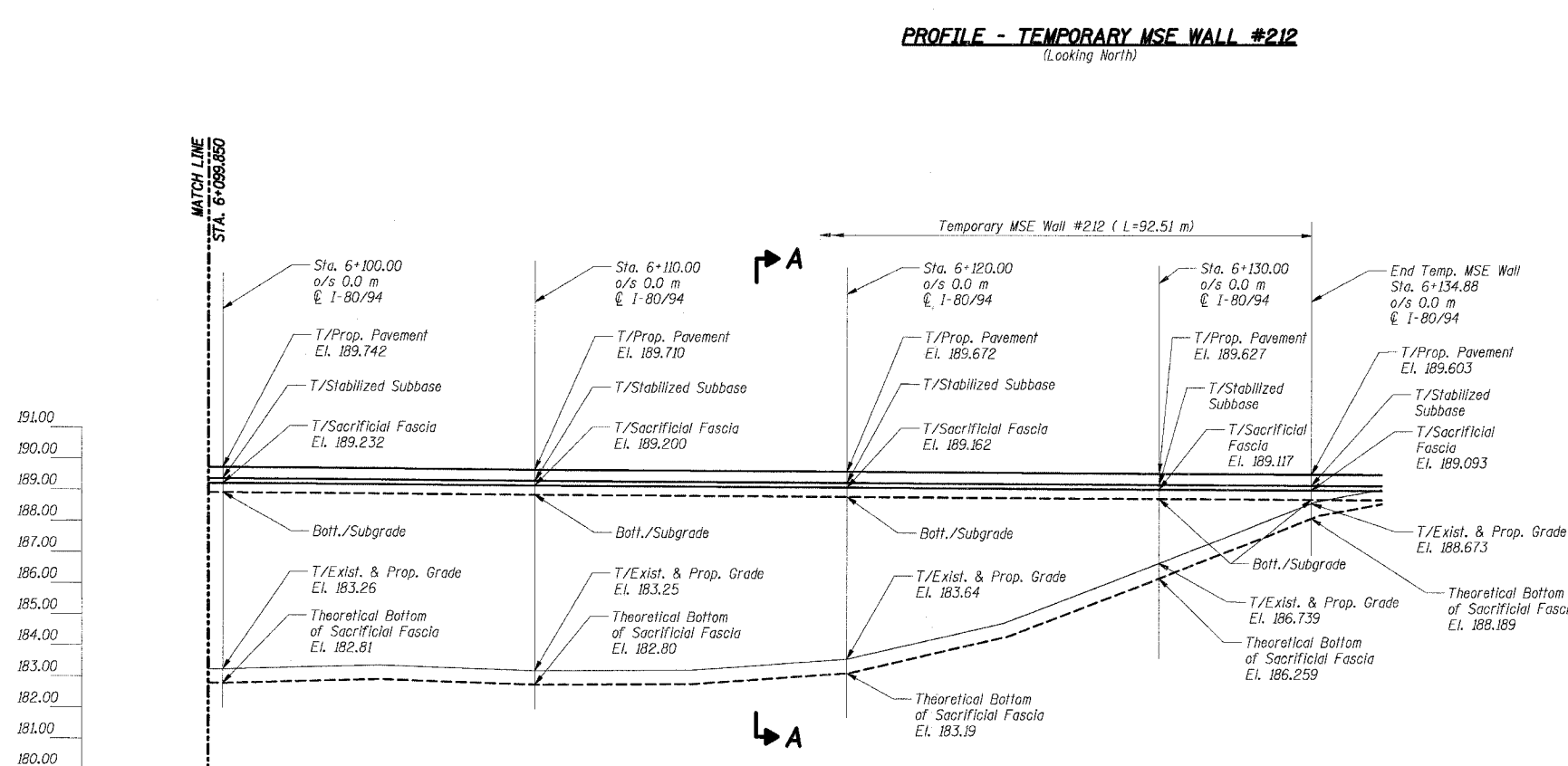


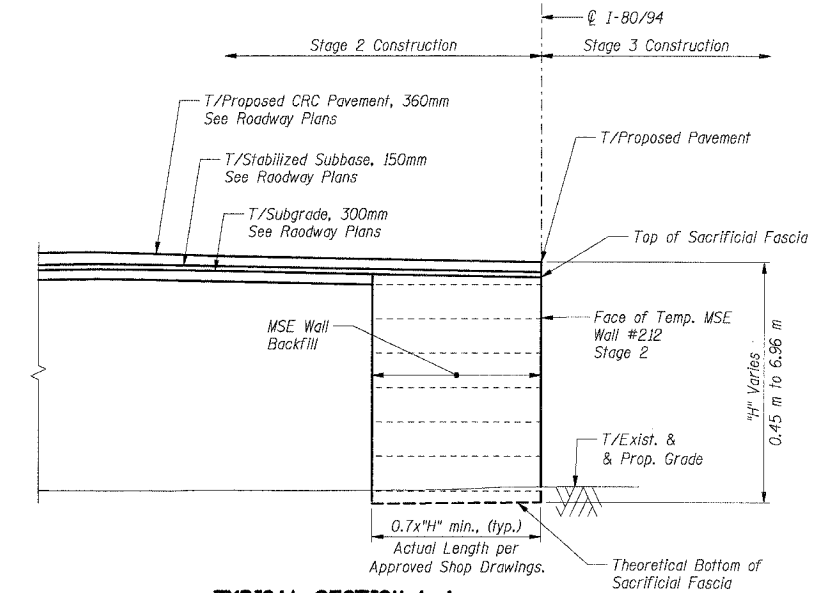
F.A.I. RTE.	SECTION	COUNTY	TOTAL SHEETS	SHEET NO.
80/94	*	COOK	631	384
STA.	TO STA.			
FED. ROAD DIST. NO.	ILLINOIS	FED. AID PROJECT		
* (2425 & 2626) R-2		CONTRACT NO. 62111		



PROFILE - TEMPORARY MSE WALL #212
(Looking North)



PROFILE - TEMPORARY MSE WALL #212
(Looking North)



TYPICAL SECTION A-A
(Looking East)

- Notes:
- All dimensions are in millimeters (mm) except as noted.
 - Water Main relocation constructed by others under Contract 62350.
 - Work this sheet with Shfs. RS-6 thru RS-11.

BILL OF MATERIAL

Item	Unit	Total
Temporary Mechanically Stabilized Earth Retaining Walls	Sq m	510
Structure Excavation	Cu m	404

SHT. RS-12 OF 70

REVISIONS	
NAME	DATE

ILLINOIS DEPARTMENT OF TRANSPORTATION
F.A.I. ROUTE 80/94 (KINGERY EXPRESSWAY)
EB & WB INSIDE LANES (MAINLINE) CONSTRUCTION
I-80/94 OVER RAILROAD AVENUE
STRUCTURE NO. 016-2792 STA. 6+025.000
SECTION 1977-121-R
COOK COUNTY

**TEMPORARY MSE WALL #212
PROFILE & SECTIONS**

DATE: 7/18/2005
DRAWN BY: LG
CHECKED BY: MJK

TENG
TENG & ASSOCIATES, INC.
ENGINEERS/ARCHITECTS/PLANNERS
CHICAGO, ILLINOIS

\S\12\3224.DGN, \S\12\3224.DGN, \S\12\3224.DGN, \S\12\3224.DGN, \S\12\3224.DGN, \S\12\3224.DGN
 7-13-2005, 16:46:53
 T:\DOCUMENTS\PROJECTS\STRUCT\09\12\3224.DGN
 12 3 4 5 6 7 8 9 10 11 12 13 14 15 16 17 18 19 20 21 22 23 24 25 26 27 28 29 30 31 32 33 34 35 36 37 38 39 40 41 42 43 44 45 46 47 48 49 50 51 52 53 54 55 56 57 58 59 60 61 62 63