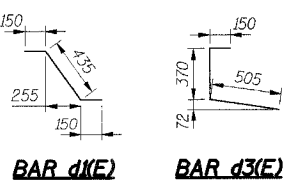
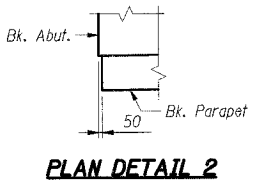
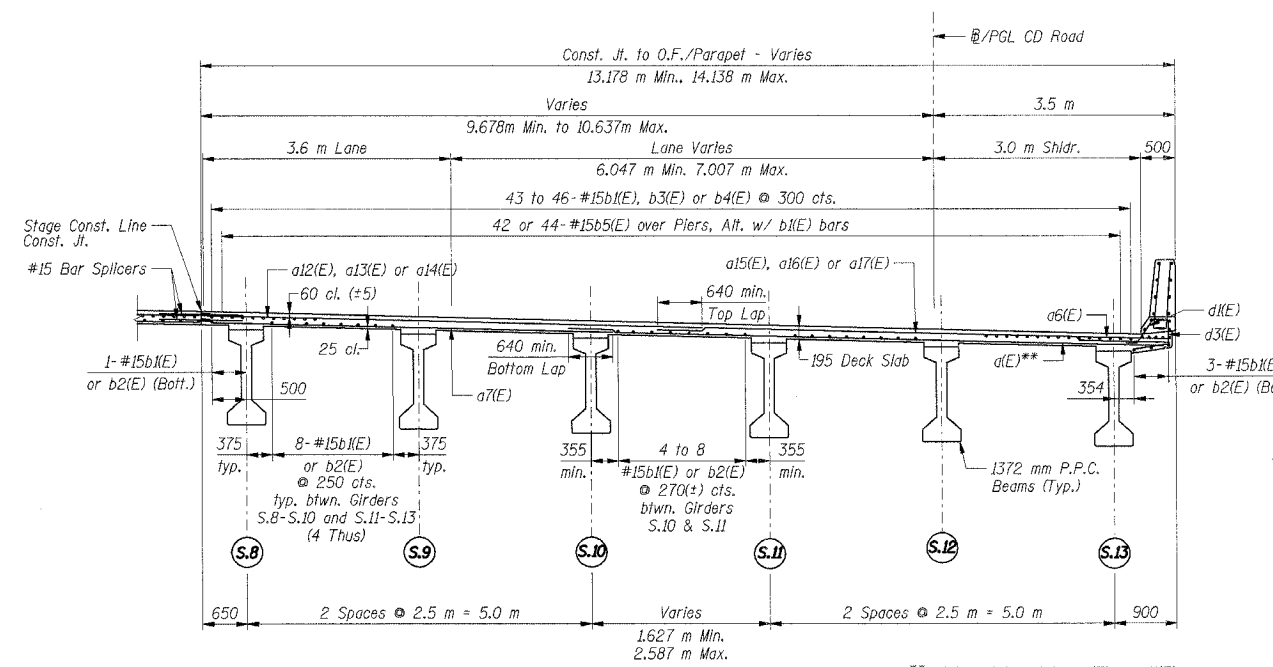
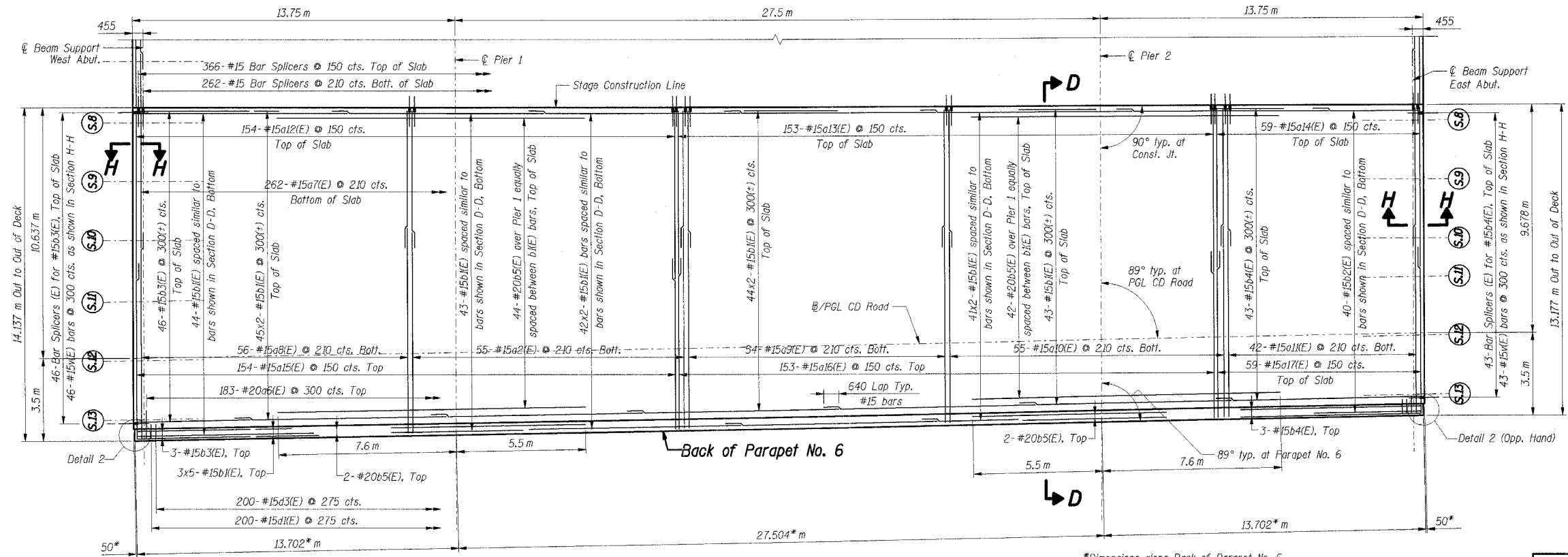


F.A.I. RTE.	SECTION	COUNTY	TOTAL SHEETS	SHEET NO.
80/94	*	COOK	631	399
STA.	TO STA.			
FED. ROAD DIST. NO.	ILLINOIS	FED. AID PROJECT		
* (2425 & 2626) R-2			CONTRACT NO. 62111	



- Notes:
- All dimensions are in millimeters (mm) except as noted.
 - Reinforcement bars designated (E) shall be epoxy coated.
 - Bars indicated thus 74x10-#15 etc. indicates 74 lines of bars with 10 lengths per line
 - For Parapet 6 Elevation, see Sht. RS-35.
 - For Section H-H, see Sht. RS-28.
 - For Reinforcement Bar List & Bill of Material, see Sht. RS-34.
 - Work this Sheet with Shts. RS-24 thru RS-26 & RS-28 thru RS-34.
 - I.F. Denotes Inside Face.
 - O.F. Denotes Outside Face.
 - All edges shall have a 20 mm chamfer unless noted otherwise.

THIS SHEET FOR INFORMATION ONLY

SHT. RS-27 OF 70

REVISIONS	
NAME	DATE

ILLINOIS DEPARTMENT OF TRANSPORTATION
 F.A.I. ROUTE 80/94 (KINGERY EXPRESSWAY)
 EB & WB INSIDE LANES (MAINLINE) CONSTRUCTION
 I-80/94 OVER RAILROAD AVENUE
 STRUCTURE NO. 016-2792 STA. 6+025.000
 SECTION 1977-121-R
 COOK COUNTY

**DECK PLAN
 DECK CROSS SECTION - IV**

DATE: 9/13/05
 DRAWN BY: LAR
 CHECKED BY: MJK

TENG
 TENG & ASSOCIATES, INC.
 ENGINEERS/ARCHITECTS/PLANNERS
 CHICAGO, ILLINOIS

KUIENSTMJ
 9-08-2005 10:29:55
 I:\DOCUMENT\9375\STRK\UDAN\SHIT30924.DGN
 1,2,3,4,5,6,7,8,9,10,11,12,13,14,15,16,17,18,19,20,21,22,23,24,25,26,27,28,29,30,31,32,33,34,35,36,37,38,39,40,41,42,43,44,45,46,47,48,49,50,51,52,53,54,55,56,57,58,59,60,61,62,63