

F.A.I. RTE.	SECTION	COUNTY	TOTAL SHEETS	SHEET NO.
80/94		COOK	631	437
STA.	TO STA.			
FED. ROAD DIST. NO.	ILLINOIS	FED. AID PROJECT		
(2425 & 2626) R-2	CONTRACT NO. 62111			

**BAR LIST - PIER 1**

Bar	No.		Size	Length (m)	Shape
	II	III			
h82(E)	8		#20	11.77	—
h83(E)		8	#20	9.72	—
h86(E)	24		#25	12.14	—
h87(E)		24	#25	10.10	—
p82(E)	24	6	#30	10.72	—
p88(E)	12		#35	12.67	—
p89(E)	12	6	#30	7.29	—
p90(E)	6	6	#30	12.90	—
p91(E)	6	6	#30	2.50	—
p92(E)		6	#35	10.94	—
p93(E)		24	#30	9.51	—
p94(E)		6	#30	3.25	—
p251(E)	12	6	#35	4.29	└┘
p252(E)	12	6	#30	3.09	└┘
p255(E)	12	6	#30	2.91	└┘
s84(E)	48	24	#15	3.99	☒
s85(E)	84	84	#15	4.21	☒
s86(E)	20	20	#15	4.38	☒
s87(E)		6	#15	3.97	☒
s91(E)	76	62	#25	3.80	└┘
s92(E)	76	62	#25	4.86	└┘
s94(E)	56	28	#15	2.49	└┘
s100(E)	10	5	#20	3.02	└┘
s251(E)	30	24	#15	2.94	└┘
s252(E)	30	24	#15	2.78	└┘
s253(E)	20	16	#15	2.60	└┘
s254(E)	10	8	#15	2.50	└┘
s255(E)	45	36	#15	1.06	└┘
181(E)	51	42	#15	1.90	└┘
182(E)	76	62	#25	2.70	└┘
u81(E)	6	3	#20	3.13	└┘
v81(E)	80	64	#35	5.13	—
w82(E)	22		#15	11.66	—
w83(E)		22	#15	9.54	—

**BILL OF MATERIAL - PIER 1**

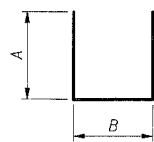
Item	Unit	II	III	Total
Concrete Structures	Cu m	111.9	94.2	206.1
Reinforcement Bars, Epoxy Coated	kg	14,720	11,730	26,450
Structure Excavation	Cu m	113	92	205

**BAR LIST - PIER 2**

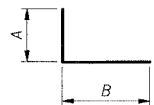
Bar	No.		Size	Length (m)	Shape
	II	III			
h82(E)	8		#20	11.77	—
h83(E)		8	#20	9.72	—
h86(E)	24		#25	12.14	—
h87(E)		24	#25	10.10	—
p82(E)	24	6	#30	10.72	—
p88(E)	12		#35	12.67	—
p89(E)	12	6	#30	7.29	—
p90(E)	6	6	#30	12.90	—
p91(E)	6	6	#30	2.50	—
p92(E)		6	#35	10.94	—
p93(E)		24	#30	9.51	—
p94(E)		6	#30	3.25	—
p251(E)	12	6	#35	4.29	└┘
p252(E)	12	6	#30	3.09	└┘
p255(E)	12	6	#30	2.91	└┘
s84(E)	48	24	#15	3.99	☒
s85(E)	84	84	#15	4.21	☒
s86(E)	20	20	#15	4.38	☒
s87(E)		6	#15	3.97	☒
s91(E)	76	62	#25	3.80	└┘
s92(E)	76	62	#25	4.86	└┘
s94(E)	56	28	#15	2.49	└┘
s100(E)	10	5	#20	3.02	└┘
s251(E)	30	24	#15	2.94	└┘
s252(E)	30	24	#15	2.78	└┘
s253(E)	20	16	#15	2.60	└┘
s254(E)	10	8	#15	2.50	└┘
s255(E)	45	36	#15	1.06	└┘
181(E)	51	42	#15	1.90	└┘
182(E)	76	62	#25	2.70	└┘
u81(E)	6	3	#20	3.13	└┘
v81(E)	80	64	#35	5.13	—
w82(E)	22		#15	11.66	—
w83(E)		22	#15	9.54	—

**BILL OF MATERIAL - PIER 2**

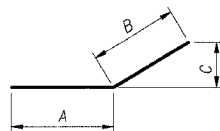
Item	Unit	II	III	Total
Concrete Structures	Cu m	111.9	94.1	205.9
Reinforcement Bars, Epoxy Coated	kg	14,720	11,730	26,450
Structure Excavation	Cu m	110	74	184



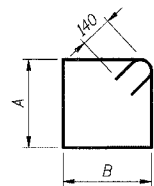
Bar	A (mm)	B (mm)
s91(E)	1470	860
s92(E)	2000	860
s94(E)	920	650
s100(E)	1110	800
s251(E)	1140	660
s252(E)	1060	660
s253(E)	970	660
s254(E)	920	660
182(E)	400	1900
u81(E)	1110	910



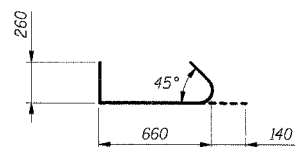
Bar	A (mm)	B (mm)
p251(E)	600	3690
p252(E)	500	2590



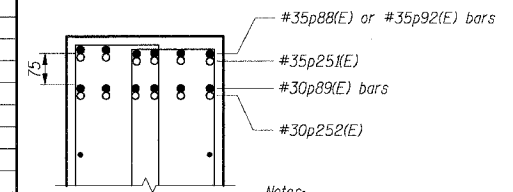
Bar	A (mm)	B (mm)	C (mm)
p255(E)	1400	1510	250



Bar	A (mm)	B (mm)
s84(E)	1205	650
s85(E)	1315	650
s86(E)	1400	650
s87(E)	1195	650



**Bar s255(E)**



- Notes:**
- p88(E), p89(E) and p92(E) bars shall be placed level (horizontally).
  - See pier elevation sheets RS-56 thru RS-63 for location and number of p(E) bars.

- Legend:**
- Straight bars
  - Hooked bars

**DETAIL 2**

- Notes:**
- All dimensions are in millimeters (mm) except as noted.
  - Reinforcement bars designated (E) shall be epoxy coated.
  - See Sht. RS-66 for Bar Splicer details and Bill of Material.

**SHT. RS-65 OF 70**

REVISIONS	
NAME	DATE

ILLINOIS DEPARTMENT OF TRANSPORTATION  
 F.A.I. ROUTE 80/94 (KINGERY EXPRESSWAY)  
 EB & WB INSIDE LANES (MAINLINE) CONSTRUCTION  
 I-80/94 OVER RAILROAD AVENUE  
 STRUCTURE NO. 016-2792 STA. 6+025.000  
 SECTION 1977-121-R  
 COOK COUNTY

**PIER 1 & 2 BAR LIST & BILL OF MATERIAL - II & III**

DATE: 7/18/2005

**TENG**

DRAWN BY: FD  
 CHECKED BY: TCU  
 TENG & ASSOCIATES, INC.  
 ENGINEERS/ARCHITECTS/PLANNERS  
 CHICAGO, ILLINOIS

N:\PI98WITZ\AJDON...AB959002A.DGN...VP98R02A.DGN  
 7-12-2005, 10:26:42  
 T:\DOCUMENT\8375750N\STRUCT\DDN\PI98R02A.DGN  
 2 3 4 56 78 9 10 11 12 13 14 15 16 17 18 19 20 21 2223 24 25 26 27 2829 30 31 3233 34 35 36 37 3839 40 41 4243 44 45 46 47 4849 50 51 52 53 54 55 56 57 5859 6061 62 63  
 BALZEREK