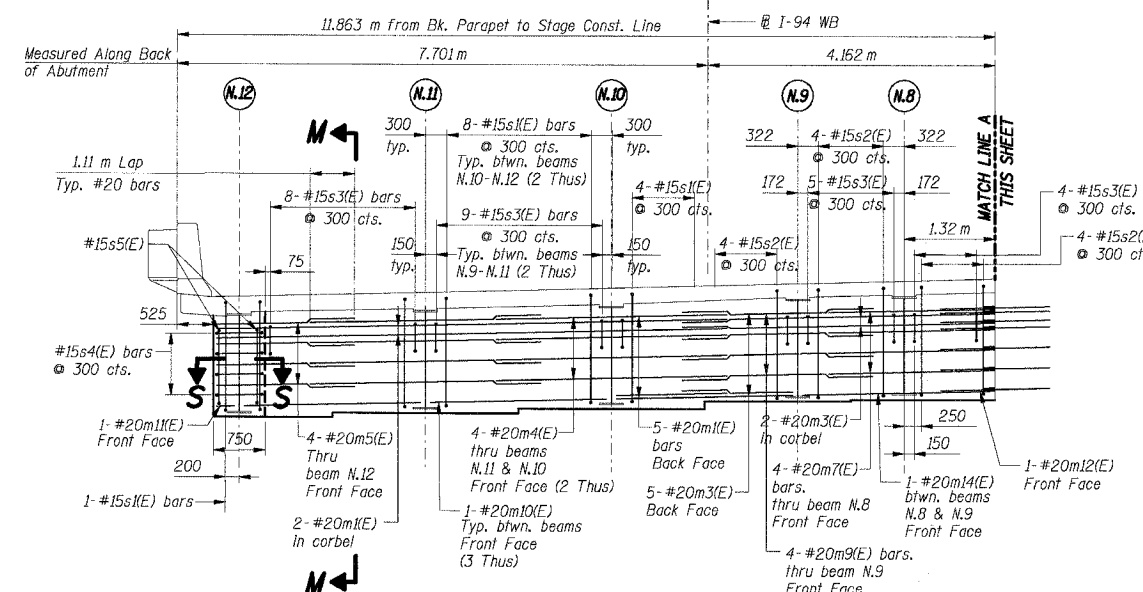
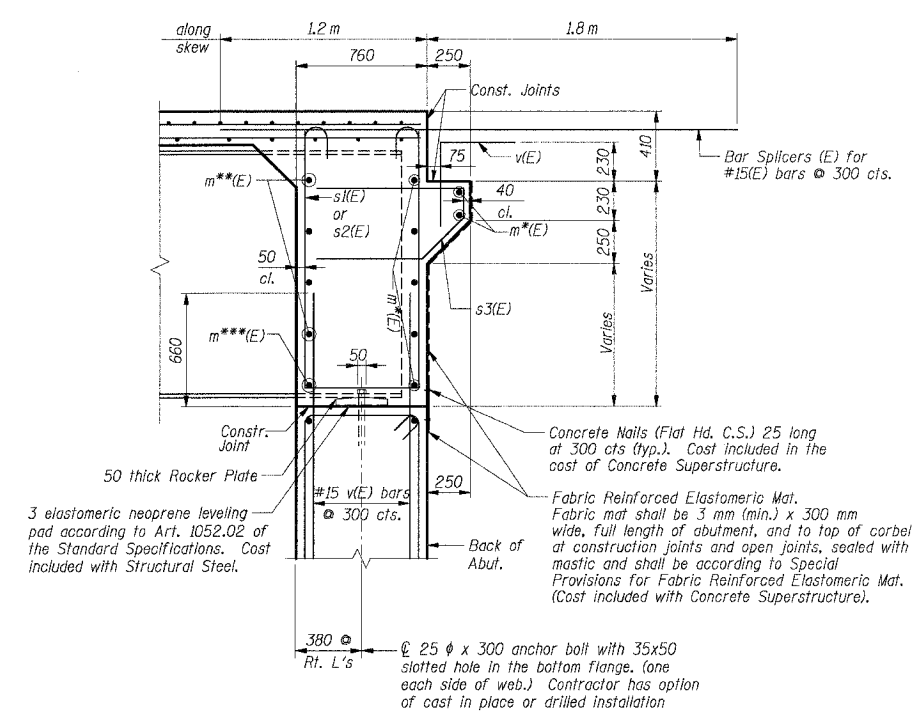


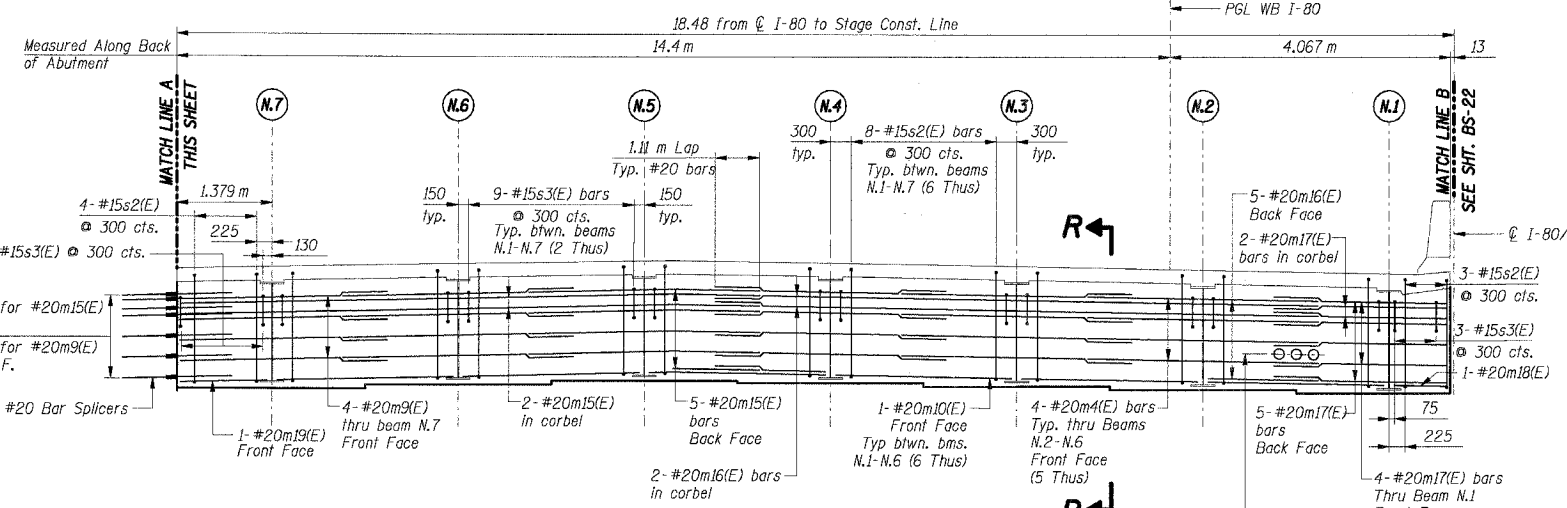
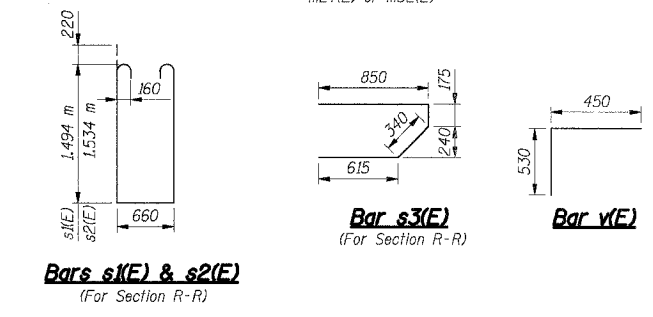
F.A.I. RTE.	SECTION	COUNTY	TOTAL SHEETS	SHEET NO.
80/94	-	COOK	631	463
STA.	TO STA.			
FED. ROAD DIST. NO.	ILLINOIS	FED. AID PROJECT		
(2425 & 2626) R-2				CONTRACT NO. 62111



ELEVATION - I
(Looking East)
FOR INFORMATION ONLY
CONSTRUCTED IN PREVIOUS CONTRACT 62110

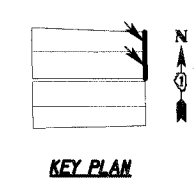


SECTION R-R
(Deck thickness varies from 195 to 235)
*m1(E), m15(E), m16(E), m17(E), m20(E), m23(E), m24(E), m25(E), m26(E) or m29(E)
**m4(E), m8(E), m9(E), m17(E), m21(E), m26(E), m28(E), m30(E) or m31(E)
***m11(E), m14(E), m18(E), m19(E), m22(E), m27(E) or m32(E)



ELEVATION - II (THIS CONTRACT)
(Looking East)

- Notes:**
- All dimensions are in millimeters (mm) except as noted.
 - Reinforcement bars designated (E) shall be epoxy coated.
 - Bars indicated thus 7x10-#15 etc. indicates 74 lines of bars with 10 lengths per line
 - For Section M-M & Section S-S, see Sht. BS-19.
 - For Bar Splicer details, see Sht. BS-56.
 - For Reinforcement Bar List & Bill of Material, see Sht. BS-23.
 - Work this Sheet with Shts. BS-15, BS-16 & BS-22..
 - F.F. Denotes Front Face
 - B.F. Denotes Back Face.
 - All edges shall have a 20 mm chamfer unless noted otherwise.



SHT. BS-21 OF 60

REVISIONS	
NAME	DATE

ILLINOIS DEPARTMENT OF TRANSPORTATION
F.A.I. ROUTE 80/94 (KINGERY EXPRESSWAY)
EB & WB INSIDE LANES (MAINLINE) CONSTRUCTION
I-80/94 OVER BURNHAM AVENUE
STRUCTURE NO. 016-2791 STA. 6+772.591
SECTION 1977-121-R
COOK COUNTY

**EAST INTEGRAL BACKWALL
ELEVATIONS & SECTIONS - I & II**

DATE: 7/18/2005
DRAWN BY: LAR
CHECKED BY: MJK

TENG
TENG & ASSOCIATES, INC.
ENGINEERS/ARCHITECTS/PLANNERS
CHICAGO, ILLINOIS

\S:\959082\A\DON... \S:\959082\A\DON... \S:\959082\A\DON... \S:\959082\A\DON... \S:\959082\A\DON...
 7-12-2005 10:26:39
 1-2-3-4-5-6-7-8-9-10-11-12-13-14-15-16-17-18-19-20-21-22-23-24-25-26-27-28-29-30-31-32-33-34-35-36-37-38-39-40-41-42-43-44-45-46-47-48-49-50-51-52-53-54-55-56-57-58-59-60-61-62