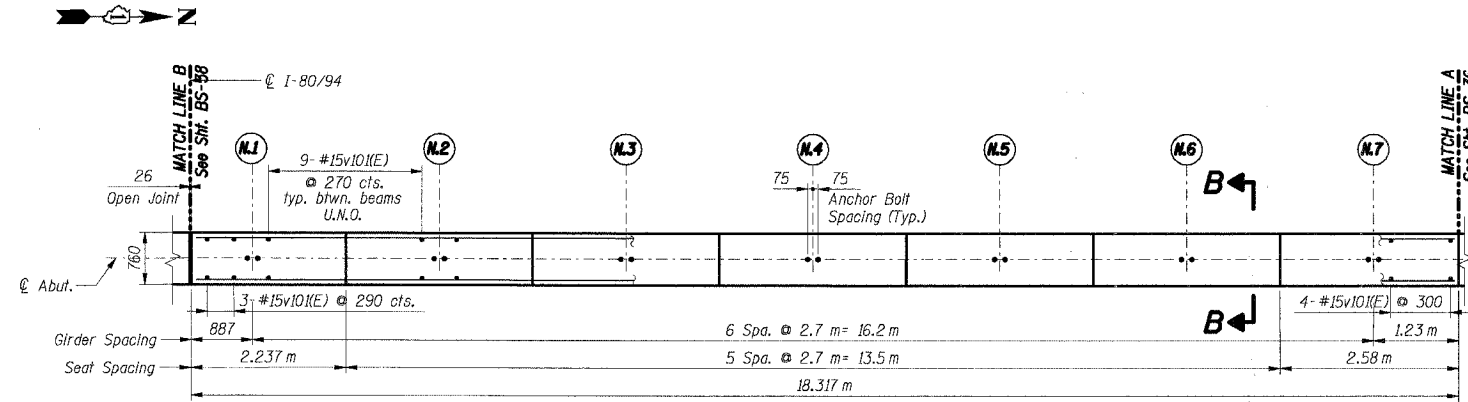
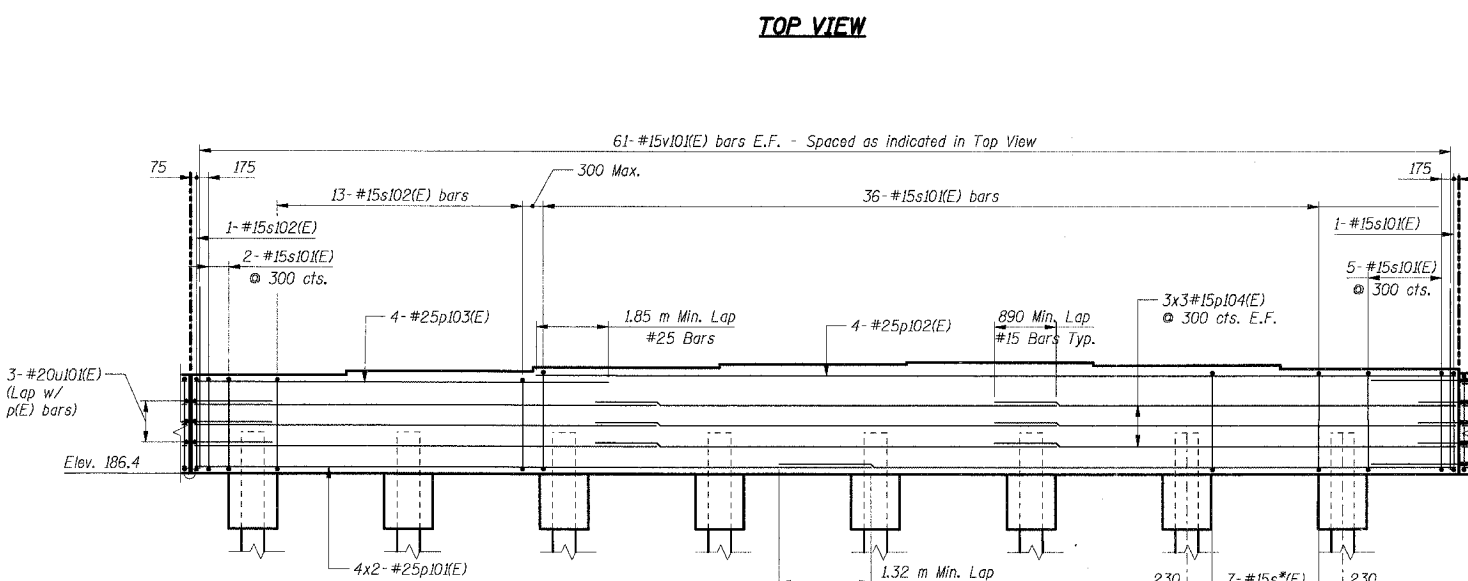


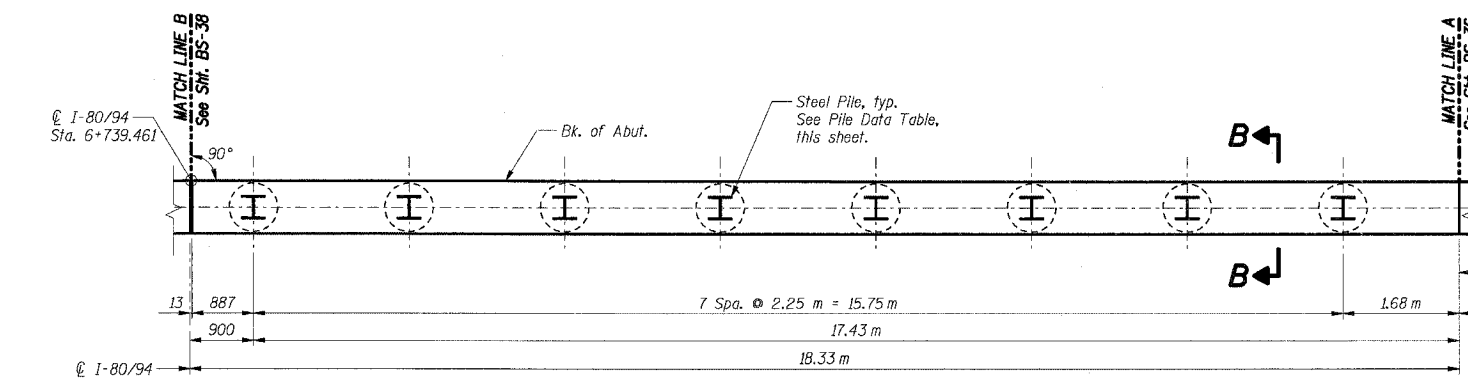
F.A.I. RT.E.	SECTION	COUNTY	TOTAL SHEETS	SHEET NO.
80/94	*	COOK	631	479
STA.	TO STA.			
FED. ROAD DIST. NO.	ILLINOIS	FED. AID PROJECT		
* (2425 & 2626) R-2		CONTRACT NO. 62111		



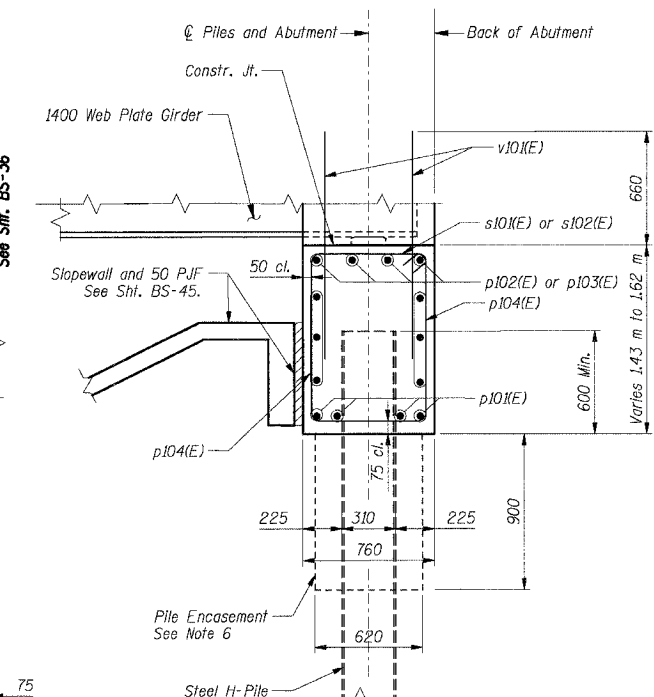
TOP VIEW



**ELEVATION
(Looking West)**



FOOTING PLAN



SECTION B-B

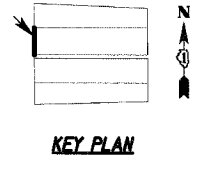
BAR LIST				
Bar	No.	Size	Length (m)	Shape
p101(E)	8	#25	9.77	—
p102(E)	4	#25	13.28	—
p103(E)	4	#25	6.79	—
p104(E)	18	#15	6.67	—
s101(E)	42	#15	4.40	⊠
s102(E)	16	#15	4.20	⊠
v101(E)	3	#20	2.85	┌┐
v102(E)	122	#15	1.32	—

BILL OF MATERIAL		
Item	Unit	Total
Concrete Structures	Cu m	21.5
Reinforcement Bars, Epoxy Coated	kg	1,480
Structure Excavation	Cu m	31

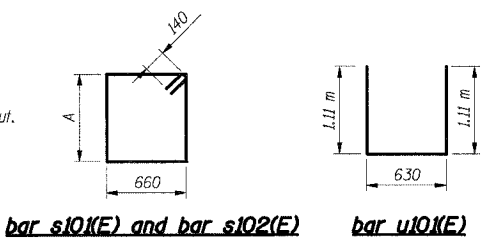
BEARING SEAT ELEVATIONS		
Girder	West Abutment	Steps
N.1	187.830	60
N.2	187.890	55
N.3	187.945	50
N.4	187.995	25
N.5	188.020	40
N.6	187.980	50
N.7	187.930	50

PILE DATA	
Type:	HP 310x79
Design Capacity:	600 kN
Required Bearing:	900 kN
Est. Length:	28 m
No. Required:	8

Bar	A (m)
s101(E)	1.40
s102(E)	1.30



- Notes:**
- All dimensions are in millimeters (mm) except as noted.
 - Reinforcement bars designated (E) shall be epoxy coated.
 - E.F. indicates each face.
 - Bars indicated thus: 4x2#15 etc. Indicates 4 lines of bars with 2 lengths per line.
 - Work this sheet with sheets BS-36 and BS-38.
 - For Pile Encasement details, see sheet BS-3.
 - For Bar Splicer details, see Sht. BS-56.



bar s10(E) and bar s102(E) bar v10(E)

SHT. BS-37 OF 60

REVISIONS	
NAME	DATE

ILLINOIS DEPARTMENT OF TRANSPORTATION
F.A.I. ROUTE 80/94 (KINGERY EXPRESSWAY)
EB & WB INSIDE LANES (MAINLINE) CONSTRUCTION
I-80/94 OVER BURNHAM AVENUE
STRUCTURE NO. 016-2791 STA. 6+772.591
SECTION 1977-121-R
COOK COUNTY

**WEST ABUTMENT
PLAN, ELEVATION & SECTION - II**

DATE: 7/18/2005
DRAWN BY: LS
CHECKED BY: TCU

TENG
TENG & ASSOCIATES, INC.
ENGINEERS/ARCHITECTS/PLANNERS
CHICAGO, ILLINOIS

\A899010A.DGN, \A899022A.DGN, \A899032A.DGN, \A899042A.DGN, \A899052A.DGN, \A899062A.DGN, \A899072A.DGN, \A899082A.DGN, \A899092A.DGN, \A899102A.DGN, \A899112A.DGN, \A899122A.DGN, \A899132A.DGN, \A899142A.DGN, \A899152A.DGN, \A899162A.DGN, \A899172A.DGN, \A899182A.DGN, \A899192A.DGN, \A899202A.DGN, \A899212A.DGN, \A899222A.DGN, \A899232A.DGN, \A899242A.DGN, \A899252A.DGN, \A899262A.DGN, \A899272A.DGN, \A899282A.DGN, \A899292A.DGN, \A899302A.DGN, \A899312A.DGN, \A899322A.DGN, \A899332A.DGN, \A899342A.DGN, \A899352A.DGN, \A899362A.DGN, \A899372A.DGN, \A899382A.DGN, \A899392A.DGN, \A899402A.DGN, \A899412A.DGN, \A899422A.DGN, \A899432A.DGN, \A899442A.DGN, \A899452A.DGN, \A899462A.DGN, \A899472A.DGN, \A899482A.DGN, \A899492A.DGN, \A899502A.DGN, \A899512A.DGN, \A899522A.DGN, \A899532A.DGN, \A899542A.DGN, \A899552A.DGN, \A899562A.DGN, \A899572A.DGN, \A899582A.DGN, \A899592A.DGN, \A899602A.DGN, \A899612A.DGN, \A899622A.DGN, \A899632A.DGN, \A899642A.DGN, \A899652A.DGN, \A899662A.DGN, \A899672A.DGN, \A899682A.DGN, \A899692A.DGN, \A899702A.DGN, \A899712A.DGN, \A899722A.DGN, \A899732A.DGN, \A899742A.DGN, \A899752A.DGN, \A899762A.DGN, \A899772A.DGN, \A899782A.DGN, \A899792A.DGN, \A899802A.DGN, \A899812A.DGN, \A899822A.DGN, \A899832A.DGN, \A899842A.DGN, \A899852A.DGN, \A899862A.DGN, \A899872A.DGN, \A899882A.DGN, \A899892A.DGN, \A899902A.DGN, \A899912A.DGN, \A899922A.DGN, \A899932A.DGN, \A899942A.DGN, \A899952A.DGN, \A899962A.DGN, \A899972A.DGN, \A899982A.DGN, \A899992A.DGN