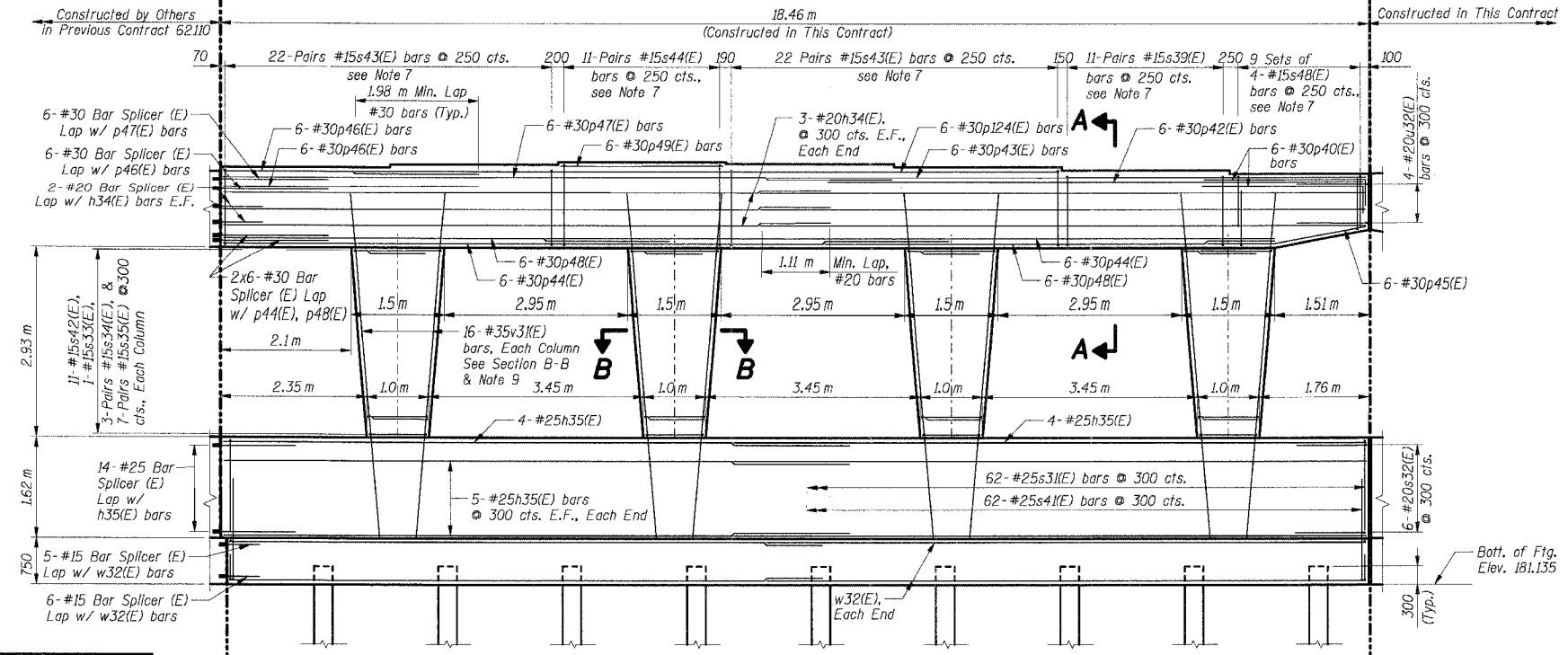
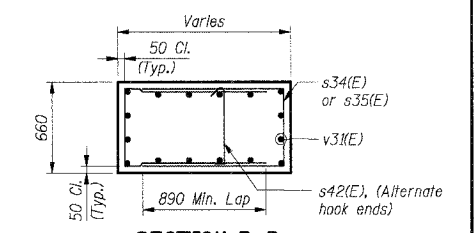
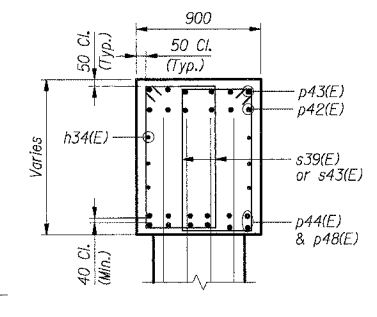
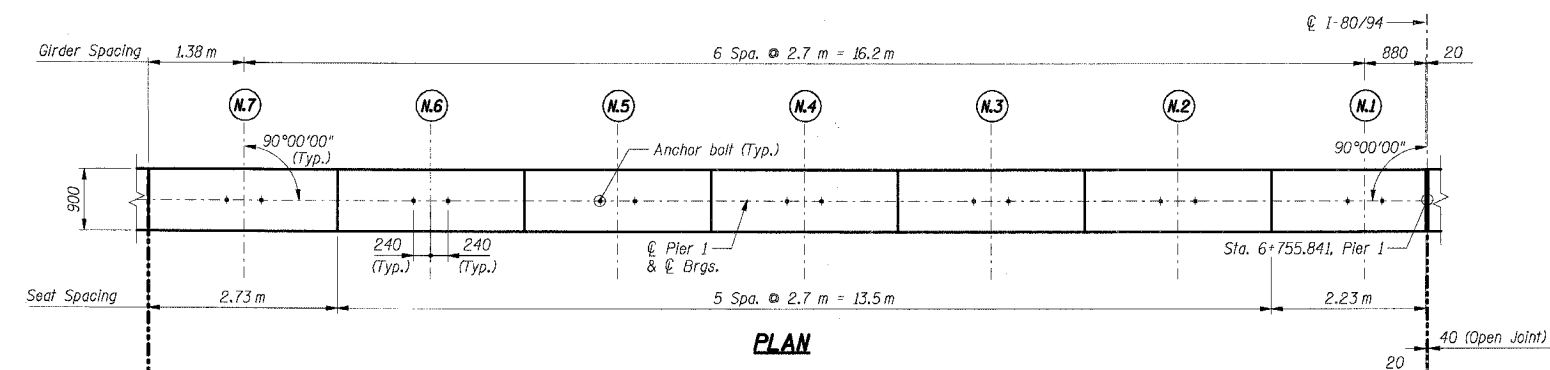
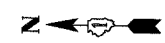
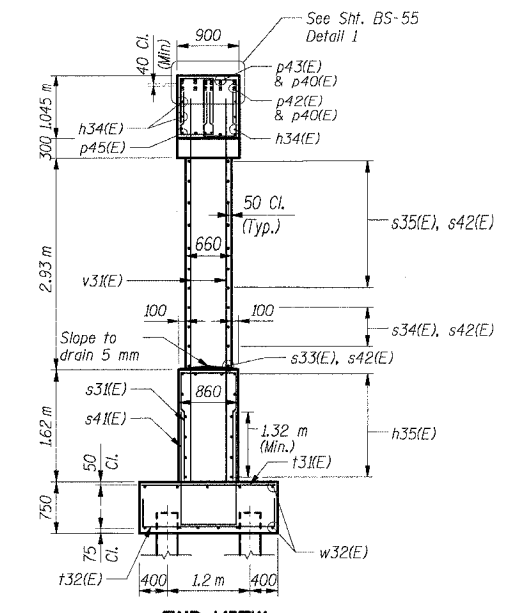


F.A.I. RTE.	SECTION	COUNTY	TOTAL SHEETS	SHEET NO.
80/94		COOK	631	489
STA.	TO STA.			
FED. ROAD DIST. NO.	ILLINOIS	FED. AID PROJECT		
• (2425 & 2626) R-2		CONTRACT NO. 62111		

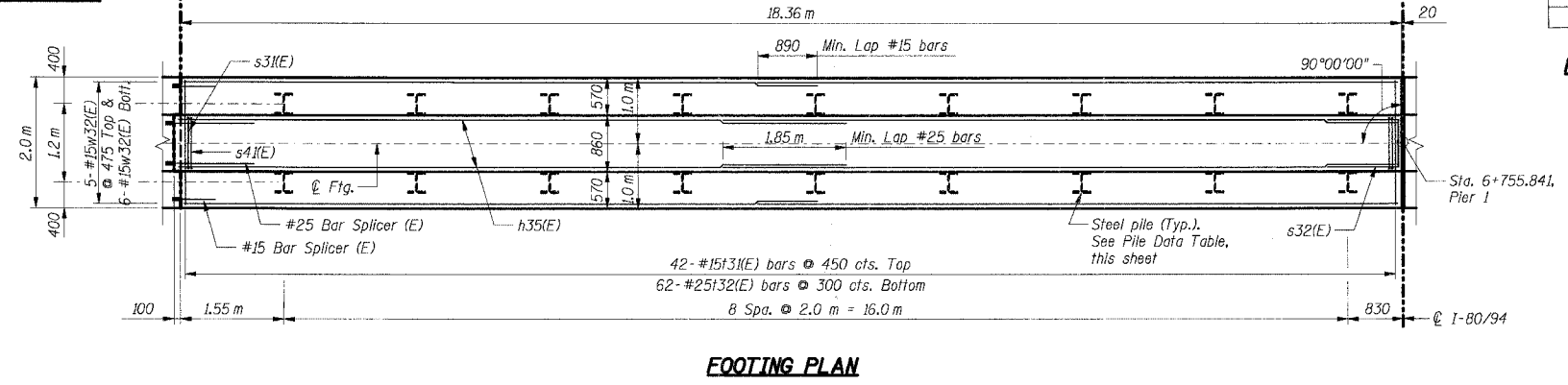
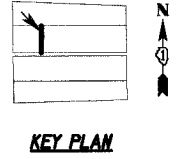


Girders	Elevations
N.7	187.880
N.6	187.930
N.5	187.970
N.4	187.945
N.3	187.895
N.2	187.840
N.1	187.780



Type:	HP 310 x 79
Design Capacity:	600 kN
Required Bearing:	900 kN
Est. Length:	22 m
No. Required:	18

- Notes:**
- All dimensions are in millimeters (mm) except as noted.
 - Reinforcement bars designated (E) shall be epoxy coated.
 - E.F. indicates Each Face.
 - All edges shall have 20 mm chamfers except as noted.
 - For bar splicer details see Sht. BS-56.
 - Work this sheet with Sht. BS-55.
 - Space reinforcement in cap to miss anchor bolts.
 - For Anchor Bolt details see Sht. BS-35.
 - All column "v" bars shall be firmly tied and fixed in position prior to casting crashwall portion of pier.



SHT. BS-47 OF 60

NAME	DATE

ILLINOIS DEPARTMENT OF TRANSPORTATION
 F.A.I. ROUTE 80/94 (KINGERY EXPRESSWAY)
 EB & WB INSIDE LANES (MAINLINE) CONSTRUCTION
 I-80/94 OVER BURNHAM AVENUE
 STRUCTURE NO. 016-2791 STA. 6+772.591
 SECTION 1977-121-R
 COOK COUNTY

**PIER 1
 PLAN, ELEVATION & SECTION - II**

DATE: 7/18/2005
 DRAWN BY: NK
 CHECKED BY: TCU
TENG
 TENG & ASSOCIATES, INC.
 ENGINEERS/ARCHITECTS/PLANNERS
 CHICAGO, ILLINOIS

\P996662A.DGN, \P996662A.DGN, \P996662A.DGN, \P996662A.DGN, \P996662A.DGN
 7-12-2005, 09:56:59
 T:\DOCUMENTS\153150X\STRUCT\06N\917632A.DGN
 12 13 14 15 16 17 18 19 20 21 22 23 24 25 26 27 28 29 30 31 32 33 34 35 36 37 38 39 40 41 42 43 44 45 46 47 48 49 50 51 52 53 54 55 56 57 58 59 60 61 62 63