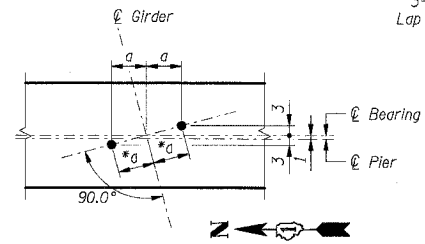
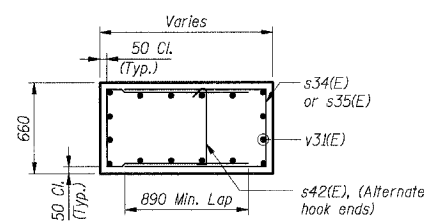
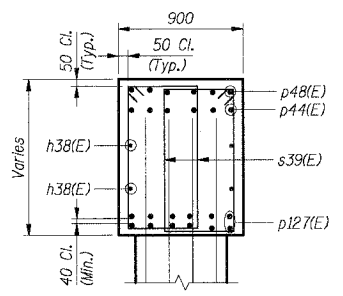
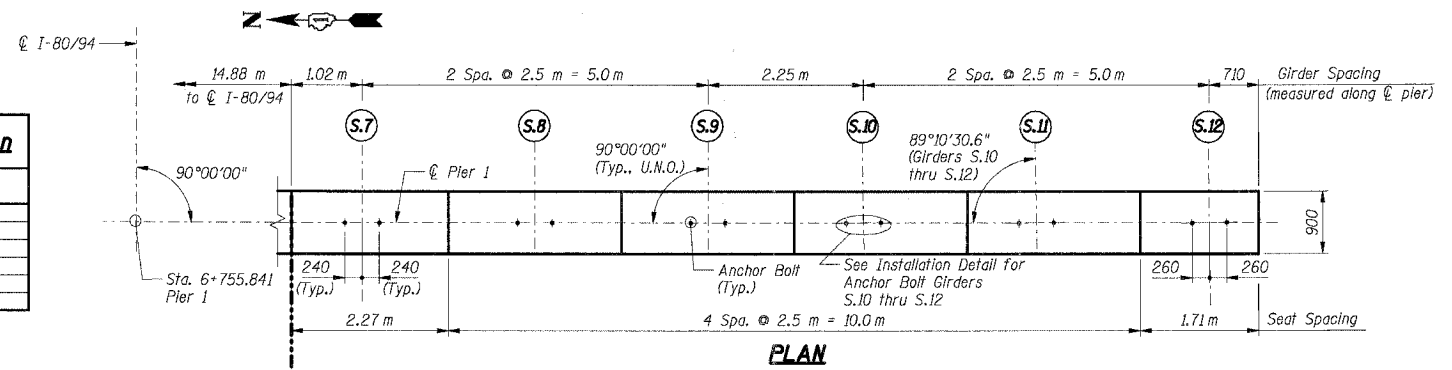


|                     |          |                    |              |           |
|---------------------|----------|--------------------|--------------|-----------|
| F.A.I. RTE.         | SECTION  | COUNTY             | TOTAL SHEETS | SHEET NO. |
| 80/94               |          | COOK               | 631          | 491       |
| STA.                | TO STA.  |                    |              |           |
| FED. ROAD DIST. NO. | ILLINOIS | FED. AID PROJECT   |              |           |
| • (2425 & 2626) R-2 |          | CONTRACT NO. 62111 |              |           |

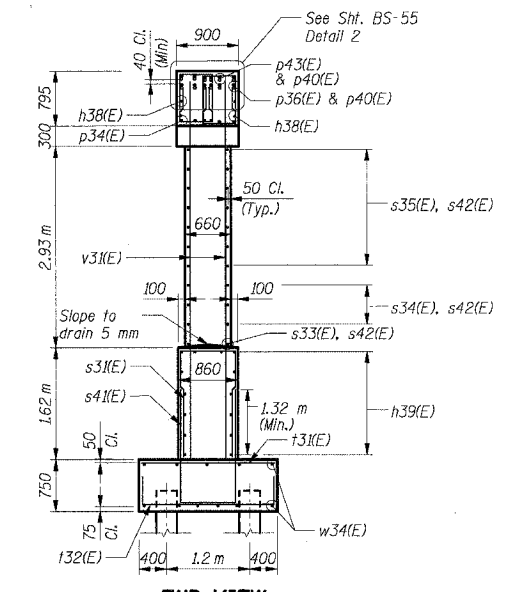
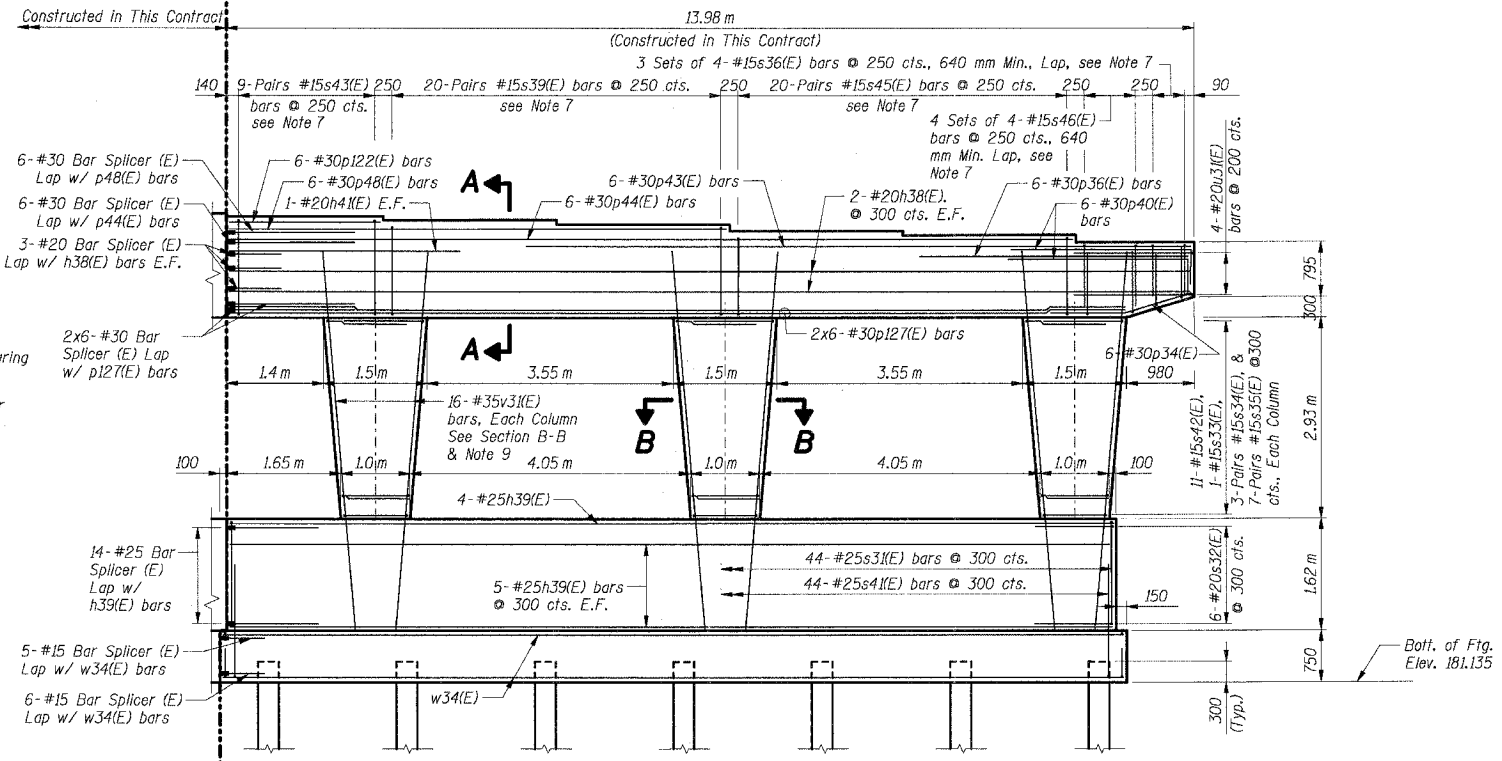
| Girders | Elevations |
|---------|------------|
| S.7     | 187.905    |
| S.8     | 187.855    |
| S.9     | 187.790    |
| S.10    | 187.695    |
| S.11    | 187.635    |
| S.12    | 187.530    |



**ANCHOR BOLT INSTALLATION DETAIL**  
(Girders S.10 thru S.12)

\* a = 260 mm for Girder N.12, 240 mm for Girders N.9 thru N.11

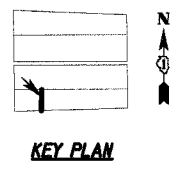
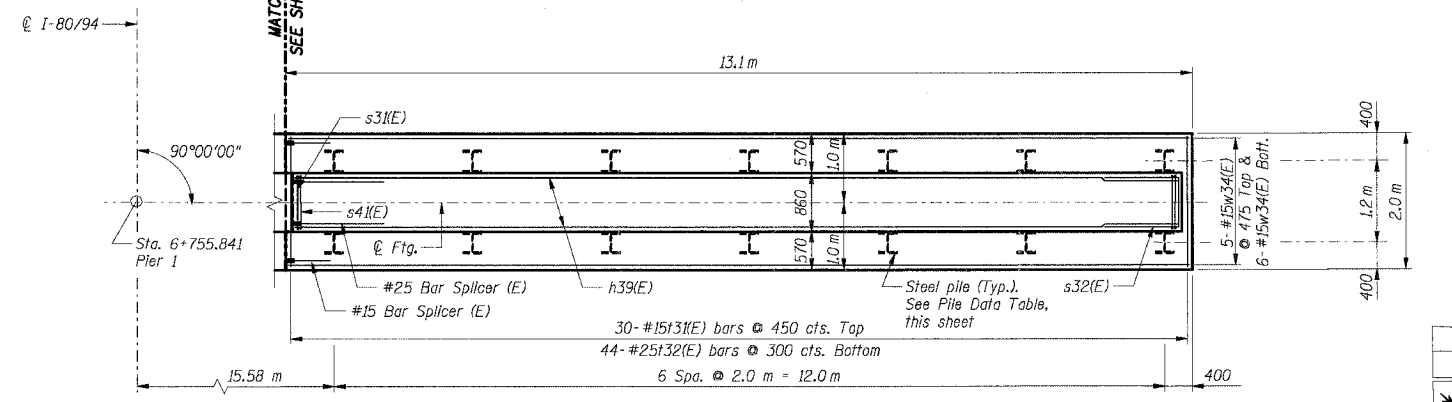
a = 260 mm for Girder N.12, 240 mm for Girders N.9 thru N.11



**PILE DATA**

Type: HP 310 x 79  
 Design Capacity: 600 kN  
 Required Bearing: 900 kN  
 Est. Length: 22 m  
 No. Required: 14

- Notes:**
- All dimensions are in millimeters (mm) except as noted.
  - Reinforcement bars designated (E) shall be epoxy coated.
  - E.F. Indicates Each Face.
  - All edges shall have 20 mm chamfers except as noted.
  - For bar splicer details see Sht. BS-56.
  - Work this sheet with Sht. BS-55.
  - Space reinforcement in cap to miss anchor bolts.
  - For Anchor Bolt details see Sht. BS-35.
  - All column "v" bars shall be firmly tied and fixed in position prior to casting crashwall portion of pier.



**SHT. BS-49 OF 60**

| REVISIONS |      |
|-----------|------|
| NAME      | DATE |
|           |      |
|           |      |
|           |      |
|           |      |

ILLINOIS DEPARTMENT OF TRANSPORTATION  
 F.A.I. ROUTE 80/94 (KINGERY EXPRESSWAY)  
 EB & WB INSIDE LANES (MAINLINE) CONSTRUCTION  
 I-80/94 OVER BURNHAM AVENUE  
 STRUCTURE NO. 016-2791 STA. 6+772.591  
 SECTION 1977-121-R  
 COOK COUNTY

**PIER 1  
 PLAN, ELEVATION & SECTION- IV**

DATE: 7/18/2005  
 DRAWN BY: NK  
 CHECKED BY: TCU

**TENG**  
 TENG & ASSOCIATES, INC.  
 ENGINEERS/ARCHITECTS/PLANNERS  
 CHICAGO, ILLINOIS

BAJZEKU  
 1-1995682A.DGN, \\PI99962A.DGN, \\M99962A.DGN  
 7-12-2005, 10:58:55  
 I:\DOCUMENTS\1531505\STRUCT\108\N\PIE6072A.DGN  
 2-3-2005, 10:30:11, 12, 13, 14, 15, 16, 17, 18, 19, 20, 21, 22, 23, 24, 25, 26, 27, 28, 29, 30, 31, 32, 33, 34, 35, 36, 37, 38, 39, 40, 41, 42, 43, 44, 45, 46, 47, 48, 49, 50, 51, 52, 53, 54, 55, 56, 57, 58, 59, 60, 61, 62, 63