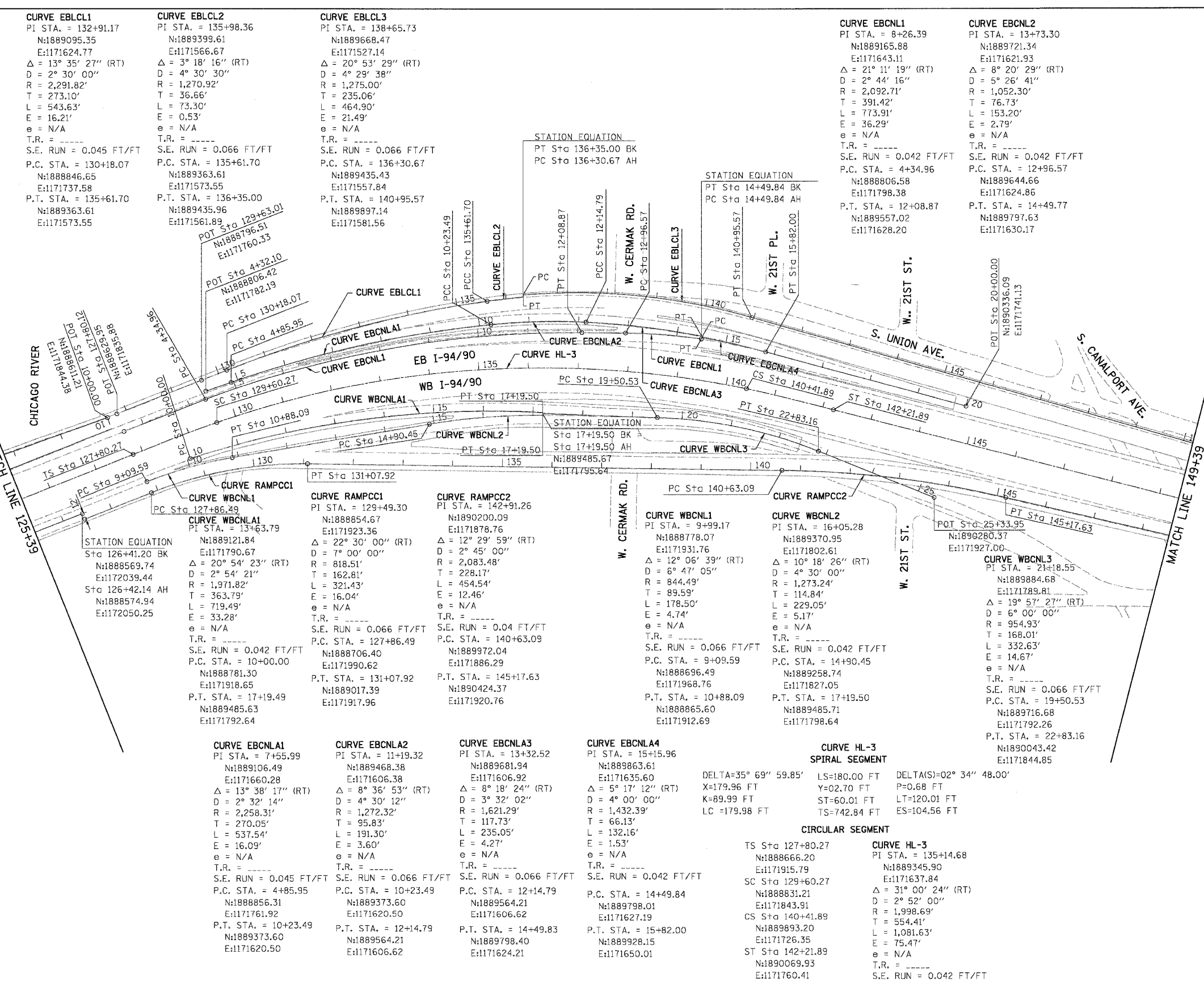


F.A.I.	SECTION	COUNTY	TOTAL SHEETS	SHEET NO.
94/90	2003-028F	COOK	419	17
STA. 62580		TO STA.		
FED. ROAD DIST. NO.		ILLINOIS FED. AID PROJECT		



CURVE EBLCL1
 PI STA. = 132+91.17
 N:1889095.35
 E:1171624.77
 $\Delta = 13^\circ 35' 27''$ (RT)
 $D = 2^\circ 30' 00''$
 $R = 2,291.82'$
 $T = 273.10'$
 $L = 543.63'$
 $E = 16.21'$
 $e = N/A$
 T.R. = -----
 S.E. RUN = 0.045 FT/FT
 P.C. STA. = 130+18.07
 N:1888846.65
 E:1171737.58
 P.T. STA. = 135+61.70
 N:1889363.61
 E:1171573.55

CURVE EBLCL2
 PI STA. = 135+98.36
 N:1889399.61
 E:1171566.67
 $\Delta = 3^\circ 18' 16''$ (RT)
 $D = 4^\circ 30' 30''$
 $R = 1,270.92'$
 $T = 36.66'$
 $L = 73.30'$
 $E = 0.53'$
 $e = N/A$
 T.R. = -----
 S.E. RUN = 0.066 FT/FT
 P.C. STA. = 135+61.70
 N:1889363.61
 E:1171573.55
 P.T. STA. = 136+35.00
 N:1889435.96
 E:1171561.89

CURVE EBLCL3
 PI STA. = 138+65.73
 N:1889668.47
 E:1171527.14
 $\Delta = 20^\circ 53' 29''$ (RT)
 $D = 4^\circ 29' 38''$
 $R = 1,275.00'$
 $T = 235.06'$
 $L = 464.90'$
 $E = 21.49'$
 $e = N/A$
 T.R. = -----
 S.E. RUN = 0.066 FT/FT
 P.C. STA. = 136+30.67
 N:1889435.43
 E:1171557.84
 P.T. STA. = 140+95.57
 N:1889897.14
 E:1171581.56

CURVE EBCNL1
 PI STA. = 8+26.39
 N:1889165.88
 E:1171643.11
 $\Delta = 21^\circ 11' 19''$ (RT)
 $D = 2^\circ 44' 16''$
 $R = 2,092.71'$
 $T = 391.42'$
 $L = 773.91'$
 $E = 36.29'$
 $e = N/A$
 T.R. = -----
 S.E. RUN = 0.042 FT/FT
 P.C. STA. = 4+34.96
 N:1888806.58
 E:1171798.38
 P.T. STA. = 12+08.87
 N:1889557.02
 E:1171628.20

CURVE EBCNL2
 PI STA. = 13+73.30
 N:1889721.34
 E:1171621.93
 $\Delta = 8^\circ 20' 29''$ (RT)
 $D = 5^\circ 26' 41''$
 $R = 1,052.30'$
 $T = 76.73'$
 $L = 153.20'$
 $E = 2.79'$
 $e = N/A$
 T.R. = -----
 S.E. RUN = 0.042 FT/FT
 P.C. STA. = 12+96.57
 N:1889644.66
 E:1171624.86
 P.T. STA. = 14+49.77
 N:1889797.63
 E:1171630.17

CURVE WBCNL1
 PI STA. = 129+49.30
 N:1888854.67
 E:1171923.36
 $\Delta = 22^\circ 30' 00''$ (RT)
 $D = 7^\circ 00' 00''$
 $R = 818.51'$
 $T = 162.81'$
 $L = 321.43'$
 $E = 16.04'$
 $e = N/A$
 T.R. = -----
 S.E. RUN = 0.066 FT/FT
 P.C. STA. = 127+86.49
 N:1888706.40
 E:1171990.62
 P.T. STA. = 131+07.92
 N:1889017.39
 E:1171917.96

CURVE WBCNL2
 PI STA. = 142+91.26
 N:1890200.09
 E:1171878.76
 $\Delta = 12^\circ 29' 59''$ (RT)
 $D = 2^\circ 45' 00''$
 $R = 2,083.48'$
 $T = 228.17'$
 $L = 454.54'$
 $E = 12.46'$
 $e = N/A$
 T.R. = -----
 S.E. RUN = 0.04 FT/FT
 P.C. STA. = 140+63.09
 N:1888696.49
 E:1171968.76
 P.T. STA. = 10+88.09
 N:1888865.60
 E:1171912.69

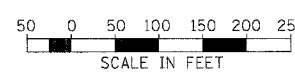
CURVE WBCNL3
 PI STA. = 16+05.28
 N:1889370.95
 E:1171802.61
 $\Delta = 10^\circ 18' 26''$ (RT)
 $D = 4^\circ 30' 00''$
 $R = 1,273.24'$
 $T = 114.84'$
 $L = 229.05'$
 $E = 5.17'$
 $e = N/A$
 T.R. = -----
 S.E. RUN = 0.042 FT/FT
 P.C. STA. = 14+90.45
 N:1889258.74
 E:1171827.05
 P.T. STA. = 17+19.50
 N:1889485.71
 E:1171798.64

CURVE RAMPCC1
 PI STA. = 129+49.30
 N:1888854.67
 E:1171923.36
 $\Delta = 22^\circ 30' 00''$ (RT)
 $D = 7^\circ 00' 00''$
 $R = 818.51'$
 $T = 162.81'$
 $L = 321.43'$
 $E = 16.04'$
 $e = N/A$
 T.R. = -----
 S.E. RUN = 0.066 FT/FT
 P.C. STA. = 127+86.49
 N:1888706.40
 E:1171990.62
 P.T. STA. = 131+07.92
 N:1889017.39
 E:1171917.96

CURVE RAMPCC2
 PI STA. = 142+91.26
 N:1890200.09
 E:1171878.76
 $\Delta = 12^\circ 29' 59''$ (RT)
 $D = 2^\circ 45' 00''$
 $R = 2,083.48'$
 $T = 228.17'$
 $L = 454.54'$
 $E = 12.46'$
 $e = N/A$
 T.R. = -----
 S.E. RUN = 0.04 FT/FT
 P.C. STA. = 140+63.09
 N:1888696.49
 E:1171968.76
 P.T. STA. = 10+88.09
 N:1888865.60
 E:1171912.69

CURVE HL-3 SPIRAL SEGMENT
 DELTA=35° 69' 59.85'
 X=179.96 FT
 K=89.99 FT
 LC =179.98 FT
 LS=180.00 FT
 Y=02.70 FT
 ST=60.01 FT
 TS=742.84 FT
 DELTA(S)=02° 34' 48.00'
 P=0.68 FT
 LT=120.01 FT
 ES=104.56 FT

BOWMAN, BARRETT & ASSOCIATES INC.
 CONSULTING ENGINEERS
 Chicago, Illinois
 312.228.0100
 www.bbainc.com



REVISIONS	
NAME	DATE

ILLINOIS DEPARTMENT OF TRANSPORTATION
 F.A.I. 94/90 (DAN RYAN EXPRESSWAY)
 NB DAN RYAN ELEVATED BRIDGE
 REPAIR FROM 15TH TO 28TH STREETS
 ALIGNMENT PLAN
 STA. 125+39 TO STA. 149+39
 SCALE: 1"=100'
 DATE: 7/22/2005
 DRAWN BY: RA
 CHECKED BY: RS

CAL05
 1/26/05