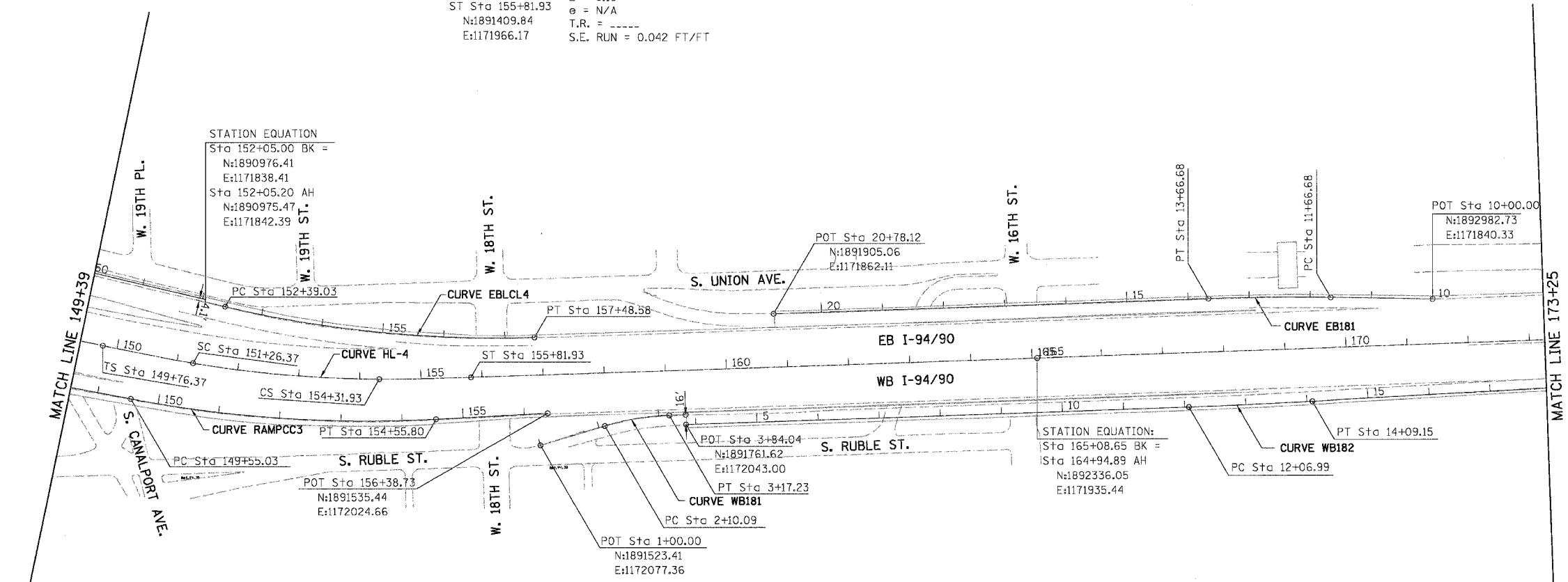


F.A.I.	SECTION	COUNTY	TOTAL SHEETS	SHEET NO.
94/90	2003-028F	COOK	419	18
STA.		TO STA.		
FED. ROAD DIST. NO.		ILLINOIS FED. AID PROJECT		
62580				

CURVE EBLCL4
 PI STA. = 154+95.33
 N:1891257.72
 E:1171909.56
 $\Delta = 15^\circ 17' 12''$ (LT)
 $D = 3^\circ 00' 00''$
 $R = 1,909.86'$
 $T = 256.30'$
 $L = 509.56'$
 $E = 17.12'$
 $\theta = \text{-----}$
 T.R. = -----
 S.E. RUN = -----
 P.C. STA. = 152+39.03
 P.T. STA. = 157+48.58

CURVE HL-4 SPIRAL SEGMENT
 $\Delta = 13^\circ 40' 00.25''$ LS=150.00 FT $\Delta = 00^\circ 15' 48.00''$
 $X = 149.98$ FT $Y = 01.96$ FT $P = 0.49$ FT
 $K = 74.99$ FT $ST = 50.01$ FT $LT = 100.01$ FT
 $LC = 149.99$ FT $TS = 303.92$ FT $ES = 14.16$ FT

CIRCULAR SEGMENT CURVE HL-4
 PI STA. = 152+79.48
 N:1890808.55
 E:1171914.27
 SC Sta 151+26.37
 N:1890955.78
 E:1171942.93
 CS Sta 154+31.93
 N:1891259.88
 E:1171969.18
 ST Sta 155+81.93
 N:1891409.84
 E:1171966.17
 $\Delta = 9^\circ 10' 00''$ (LT)
 $D = 3^\circ 00' 00''$
 $R = 1,909.86'$
 $T = 153.11'$
 $L = 305.56'$
 $E = 6.13'$
 $\theta = N/A$
 T.R. = -----
 S.E. RUN = 0.042 FT/FT



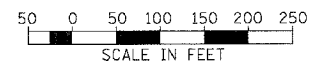
CURVE RAMPCC3
 PI STA. = 152+06.61
 N:1891101.54
 E:1172047.75
 $\Delta = 13^\circ 40' 00''$ (LT)
 $D = 2^\circ 43' 45''$
 $R = 2,099.39'$
 $T = 251.58'$
 $L = 500.76'$
 $E = 15.02'$
 $\theta = N/A$
 T.R. = -----
 S.E. RUN = 0.042 FT/FT
 P.C. STA. = 149+55.03
 N:1890854.28
 E:1172001.38
 P.T. STA. = 154+55.80
 N:1891352.77
 E:1172034.38

CURVE WB181
 PI STA. = 2+63.97
 N:1891680.30
 E:1172029.69
 $\Delta = 15^\circ 00' 00''$ (RT)
 $D = 14^\circ 00' 00''$
 $R = 409.26'$
 $T = 53.88'$
 $L = 107.14'$
 $E = 3.53'$
 $\theta = N/A$
 T.R. = -----
 S.E. RUN = 0.038 FT/FT
 P.C. STA. = 2+10.09
 N:1891628.75
 E:1172045.36
 P.T. STA. = 3+17.23
 N:1891734.15
 E:1172027.91

CURVE WB182
 PI STA. = 13+08.08
 N:1892685.14
 E:1172012.37
 $\Delta = 1^\circ 08' 44''$ (LT)
 $D = 0^\circ 34' 00''$
 $R = 10,110.88'$
 $T = 101.08'$
 $L = 202.16'$
 $E = 0.51'$
 $\theta = N/A$
 T.R. = N/A
 S.E. RUN = N/A
 P.C. STA. = 12+06.99
 N:1892584.11
 E:1172015.72
 P.T. STA. = 14+09.15
 N:1892786.08
 E:1172007.00

CURVE EB181
 PI STA. = 12+66.71
 N:1892716.07
 E:1171835.20
 $\Delta = 3^\circ 00' 00''$ (LT)
 $D = 1^\circ 30' 00''$
 $R = 3,819.72'$
 $T = 100.02'$
 $L = 200.00'$
 $E = 1.31'$
 $\theta = N/A$
 T.R. = N/A
 S.E. RUN = N/A
 P.C. STA. = 11+66.68
 N:1892816.08
 E:1171837.13
 P.T. STA. = 13+66.68
 N:1892616.11
 E:1171838.52

BOWMAN, BARRETT & ASSOCIATES INC.
 CONSULTING ENGINEERS
 Chicago, Illinois
 312.228.0100
 www.bbainc.com



REVISIONS	
NAME	DATE

ILLINOIS DEPARTMENT OF TRANSPORTATION
 F.A.I. 94/90 (DAN RYAN EXPRESSWAY)
 NB DAN RYAN ELEVATED BRIDGE
 REPAIR FROM 15TH TO 28TH STREETS
 ALIGNMENT PLAN
 STA. 149+39 TO STA. 173+25
 SCALE: 1"=100'
 DATE: 7/22/2005
 DRAWN BY: RA
 CHECKED BY: RS

CAL06
 1/26/05
 7/21/2005