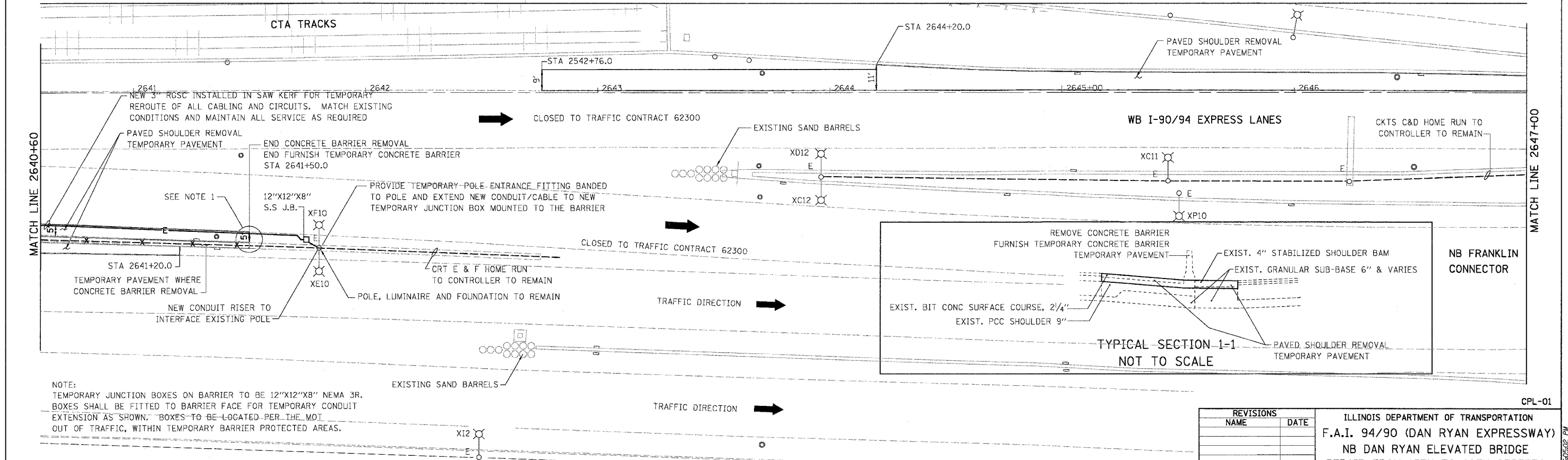
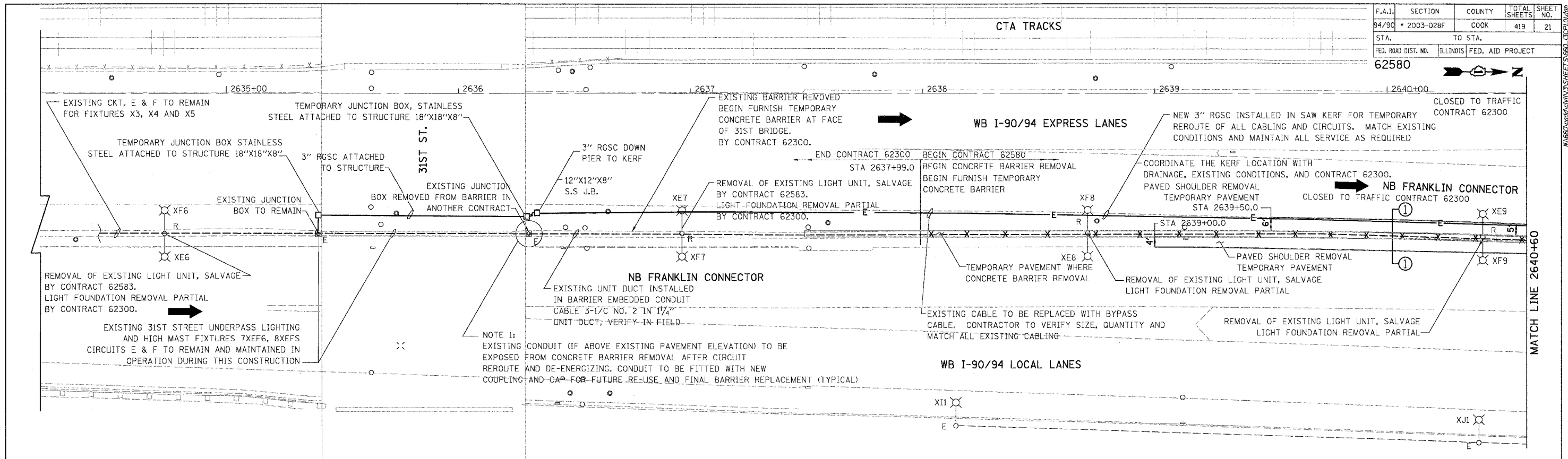
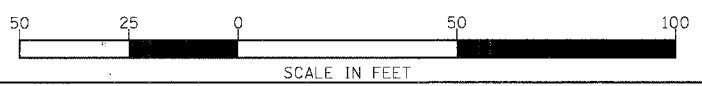


F.A.I.	SECTION	COUNTY	TOTAL SHEETS	SHEET NO.
94/90	2003-028F	COOK	419	21
STA.	TO STA.			
FED. ROAD DIST. NO.	ILLINOIS	FED. AID PROJECT	62580	



NOTE:
 TEMPORARY JUNCTION BOXES ON BARRIER TO BE 12"X12"X8" NEMA 3R.
 BOXES SHALL BE FITTED TO BARRIER FACE FOR TEMPORARY CONDUIT
 EXTENSION AS SHOWN. BOXES TO BE LOCATED PER THE MOT
 OUT OF TRAFFIC, WITHIN TEMPORARY BARRIER PROTECTED AREAS.

BOWMAN, BARRETT & ASSOCIATES INC.
 CONSULTING ENGINEERS
 Chicago, Illinois
 312.228.0100
 www.bbdaandinc.com



REVISIONS	
NAME	DATE

ILLINOIS DEPARTMENT OF TRANSPORTATION
 F.A.I. 94/90 (DAN RYAN EXPRESSWAY)
 NB DAN RYAN ELEVATED BRIDGE
 REPAIR FROM 15TH TO 28TH STREETS
 EXISTING AND PROPOSED PLAN

SCALE: 1"=20'
 DATE: 8/12/2005
 DRAWN BY: RA
 CHECKED BY: RS

6/17/2005 6:05:02 PM
 11/17/2005 6:05:02 PM