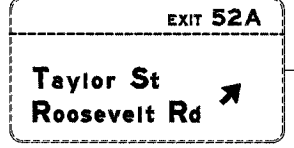
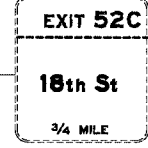
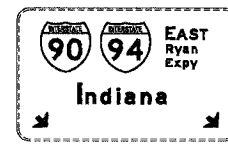




ES15-01



ES15-02

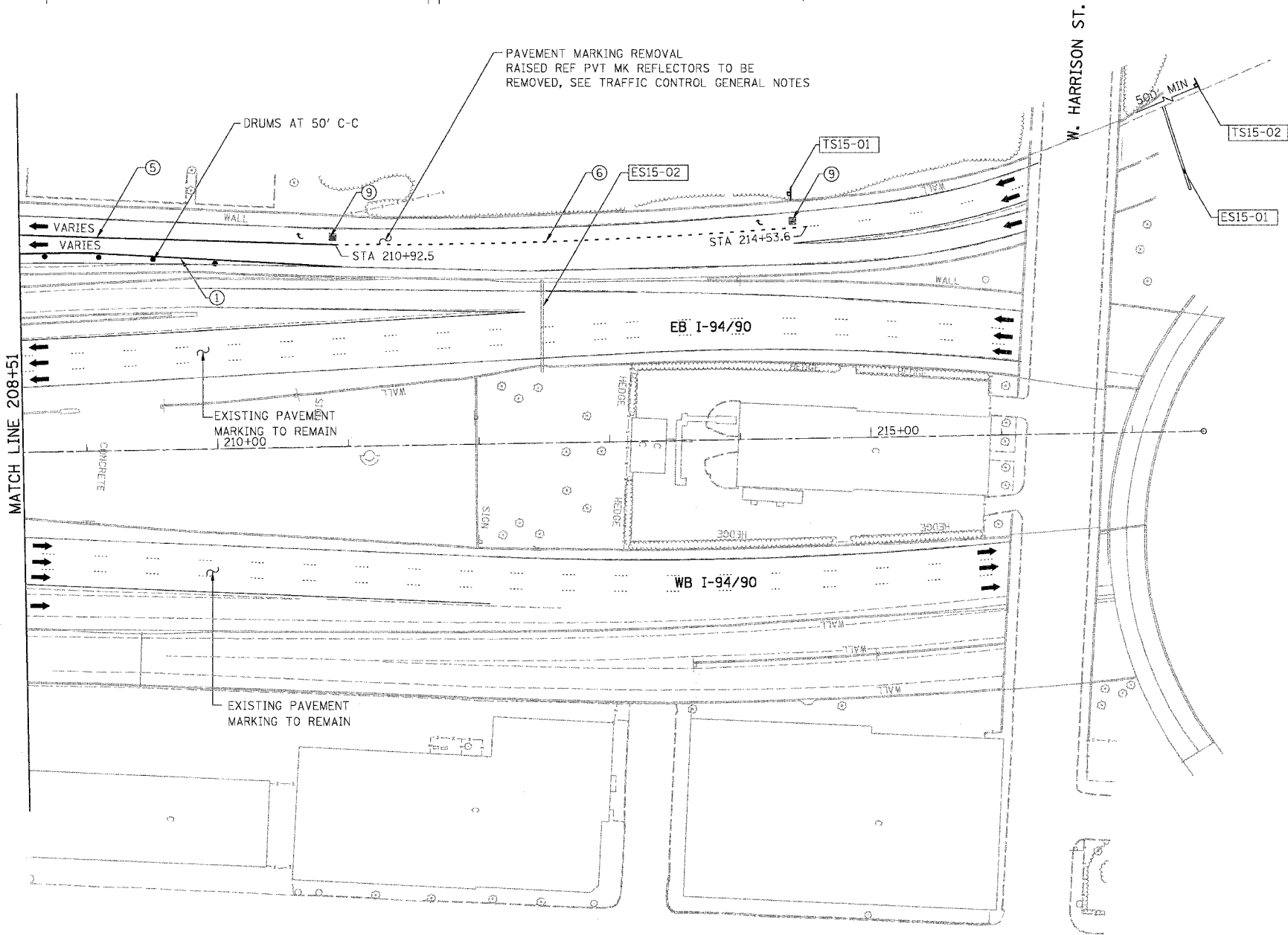


TS15-01

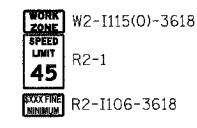
TEMPORARY INFORMATION SIGNING

NOTE:
 EB I-94/90 TEMPORARY INFORMATION SIGNING, PANEL COVERING AND PANEL REPLACING TO BE REMOVED AT END OF STAGE IIB, UNLESS OTHERWISE SPECIFIED
 EB TEMPORARY PAVEMENT MARKINGS INSTALLED IN STAGE I TO REMAIN TO END OF STAGE IIB, UNLESS OTHERWISE SPECIFIED

F.A.I.	SECTION	COUNTY	TOTAL SHEETS	SHEET NO.
94/90	2003-028F	COOK	419	43
STA.	TO STA.			
FED. ROAD DIST. NO.	ILLINOIS	FED. AID PROJECT		
62580				



TS15-02 INCLUDED IN "TRAFFIC CONTROL AND PROTECTION, (EXPRESSWAY)" ORANGE BACKGROUND BLACK LEGEND



W2-III15(O)-3618
 R2-1
 R2-II106-3618

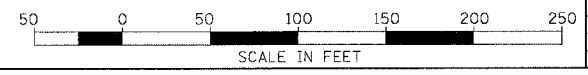
LEGEND

- WORK ZONE
- DIRECTION OF TRAFFIC
- DRUM OR BARRICADE TYPE II WITH STEADY BURN LIGHT
- IMPACT ATTENUATORS, TEMPORARY (NON-REDIRECTIVE), TEST LEVEL 3
- BARRICADE TYPE III
- TEMPORARY CONCRETE BARRIER
- ① LINE 4" (YELLOW EDGE LINE)
- ② LINE 4" (WHITE EDGE LINE)
- ③ LINE 4" (SKIP DASH, 6' SKIP - 2' DASH, WHITE)
- ④ LINE 5" (SKIP DASH, 30' SKIP - 10' DASH, WHITE)
- ⑤ LINE 8" (WHITE LINE)
- ⑥ LINE 8" (SKIP DASH, 12' SKIP - 3' DASH, WHITE)
- ⑦ LINE 12" (DIAGONAL, 30' C-C)
- ⑧ LINE 12" (DIAGONAL, 500' C-C)
- ⑨ LETTERS AND SYMBOLS
- ESx-xx EXISTING OVERHEAD OR CANTILEVER SIGNS
- GSx-xx EXISTING POST MOUNTED SIGNS
- TSx-xx TEMPORARY SIGNS

NOTE:
 ALL PAVEMENT MARKINGS ON THIS SHEET WILL BE EPOXY PAVEMENT MARKING, UNLESS OTHERWISE NOTED. MOT-15

REVISIONS	
NAME	DATE

ILLINOIS DEPARTMENT OF TRANSPORTATION
 F.A.I. 94/90 (DAN RYAN EXPRESSWAY)
 NB DAN RYAN ELEVATED BRIDGE
 REPAIR FROM 15TH TO 28TH STREETS
 MAINTENANCE OF TRAFFIC PLAN - STAGE I
 STA. 208+51 TO STA.
 SCALE: 1"=50'
 DATE: 8/12/2005
 DRAWN BY: RA
 CHECKED BY: RS



BOWMAN, BARRETT & ASSOCIATES INC.
 CONSULTING ENGINEERS
 Chicago, Illinois
 312.228.0100
 www.bbandainc.com

12/17/2005 12:37:42 AM
 12/17/2005 12:37:42 AM
 12/17/2005 12:37:42 AM