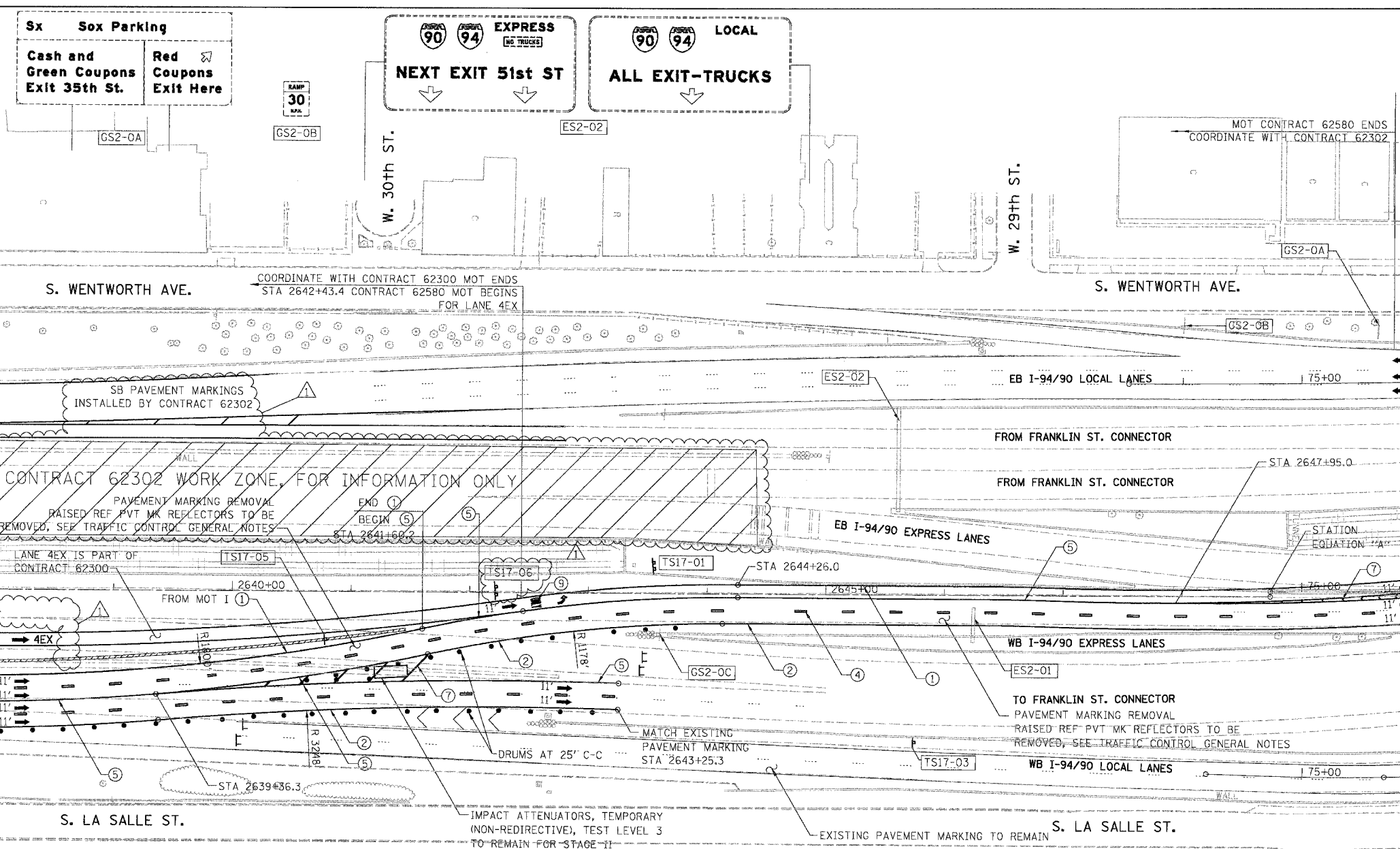
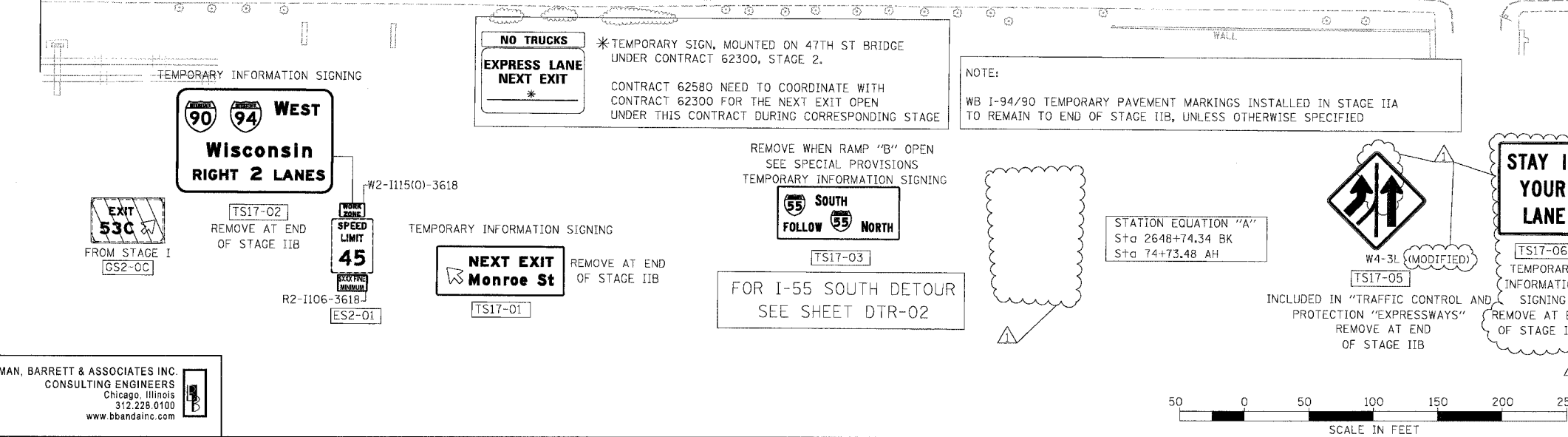


F.A.I.	SECTION	COUNTY	TOTAL SHEETS	SHEET NO.
94/90	2003-028F	COOK	419	49
STA.	TO STA.			
FED. ROAD DIST. NO.	ILLINOIS	FED. AID PROJECT		
62580				



- LEGEND**
- WORK ZONE
 - DIRECTION OF TRAFFIC
 - DRUM OR BARRICADE TYPE II WITH STEADY BURN LIGHT
 - IMPACT ATTENUATORS, TEMPORARY (NON-REDIRECTIVE), TEST LEVEL 3
 - BARRICADE TYPE III
 - TEMPORARY CONCRETE BARRIER
 - LINE 4" (YELLOW EDGE LINE)
 - LINE 4" (WHITE EDGE LINE)
 - LINE 4" (SKIP DASH, 6' SKIP - 2' DASH, WHITE)
 - LINE 5" (SKIP DASH, 30' SKIP - 10' DASH, WHITE)
 - LINE 8" (WHITE LINE)
 - LINE 8" (SKIP DASH, 12' SKIP - 3' DASH, WHITE)
 - LINE 12" (DIAGONAL, 30' C-C)
 - LINE 12" (DIAGONAL, 500' C-C)
 - LETTERS AND SYMBOLS
 - EXISTING OVERHEAD OR CANTILEVER SIGNS
 - EXISTING POST MOUNTED SIGNS
 - TEMPORARY SIGNS



NOTE: ALL PAVEMENT MARKINGS ON THIS SHEET WILL BE PAVEMENT MARKING TAPE, TYPE III, UNLESS OTHERWISE NOTED.

REVISIONS	
NAME	DATE
ADDENDUM 1	9/6/05

MOT-21

ILLINOIS DEPARTMENT OF TRANSPORTATION

F.A.I. 94/90 (DAN RYAN EXPRESSWAY) NB DAN RYAN ELEVATED BRIDGE

REPAIR FROM 15TH TO 28TH STREETS MAINTENANCE OF TRAFFIC PLAN - STAGE IIA STA. 2638+00 TO STA. 75+94

SCALE: 1"=50'

DATE: 8/12/2005

DRAWN BY: RA

CHECKED BY: RS

BOWMAN, BARRETT & ASSOCIATES INC.
CONSULTING ENGINEERS
Chicago, Illinois
312.228.0100
www.bbainc.com

