

F.A.I.	SECTION	COUNTY	TOTAL SHEETS	SHEET NO.
94/90	2003-028F	COOK	419	50
STA.		TO STA.		
FED. ROAD DIST. NO.		ILLINOIS FED. AID PROJECT		

62580

WHITE SOX PARKING
CASH USE 35TH OR PERSHING
RESERVED USE 31ST

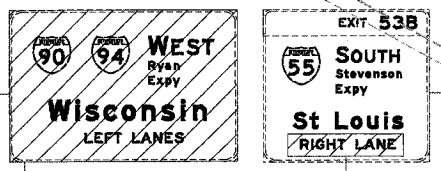
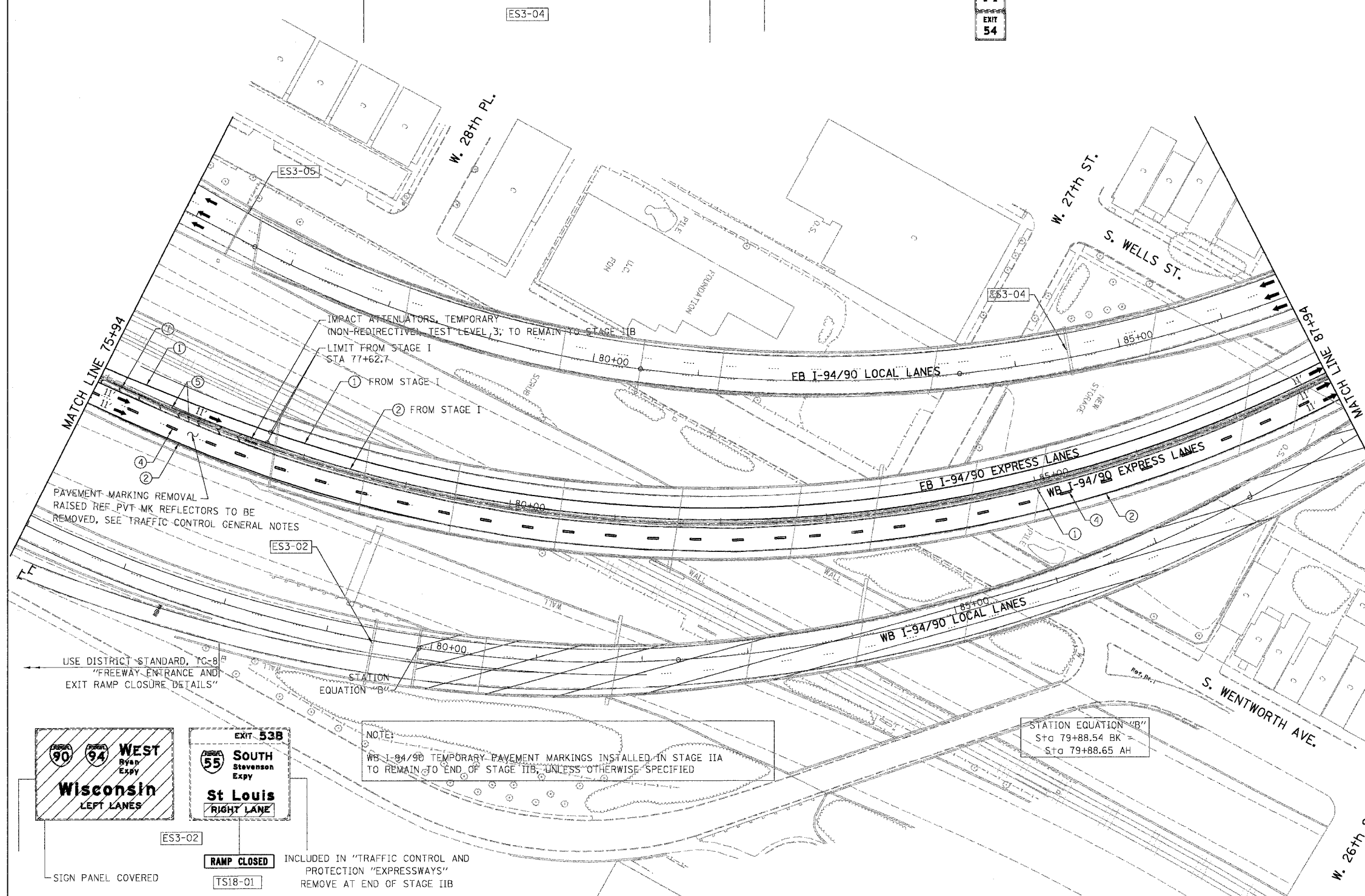
EXIT 54
31st St
1/4 MILE

EXIT 55A
35th St
1/2 MILE

EXIT 54
31st St

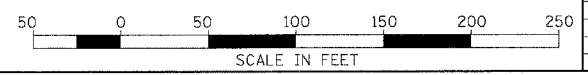
H
EXIT 54

- LEGEND**
- WORK ZONE
 - DIRECTION OF TRAFFIC
 - DRUM OR BARRICADE TYPE II WITH STEADY BURN LIGHT
 - IMPACT ATTENUATORS, TEMPORARY (NON-REDIRECTIVE), TEST LEVEL 3
 - BARRICADE TYPE III
 - TEMPORARY CONCRETE BARRIER
 - ① LINE 4" (YELLOW EDGE LINE)
 - ② LINE 4" (WHITE EDGE LINE)
 - ③ LINE 4" (SKIP DASH, 6' SKIP - 2' DASH, WHITE)
 - ④ LINE 5" (SKIP DASH, 30' SKIP - 10' DASH, WHITE)
 - ⑤ LINE 8" (WHITE LINE)
 - ⑥ LINE 8" (SKIP DASH, 12' SKIP - 3' DASH, WHITE)
 - ⑦ LINE 12" (DIAGONAL, 30' C-C)
 - ⑧ LINE 12" (DIAGONAL, 500' C-C)
 - ⑨ LETTERS AND SYMBOLS
 - ESx-xx EXISTING OVERHEAD OR CANTILEVER SIGNS
 - GSx-xx EXISTING POST MOUNTED SIGNS
 - TSx-xx TEMPORARY SIGNS



RAMP CLOSED
INCLUDED IN "TRAFFIC CONTROL AND PROTECTION "EXPRESSWAYS" REMOVE AT END OF STAGE IIB

BOWMAN, BARRETT & ASSOCIATES INC.
CONSULTING ENGINEERS
Chicago, Illinois
312.228.0100
www.bbandainc.com



REVISIONS	
NAME	DATE

ILLINOIS DEPARTMENT OF TRANSPORTATION
F.A.I. 94/90 (DAN RYAN EXPRESSWAY)
NB DAN RYAN ELEVATED BRIDGE
REPAIR FROM 15TH TO 28TH STREETS
MAINTENANCE OF TRAFFIC PLAN - STAGE IIA
STA. 75+94 TO STA. 87+94

SCALE: 1"=50'
DATE: 8/12/2005
DRAWN BY: RA
CHECKED BY: RS

7/17/2005 12:40:05 PM