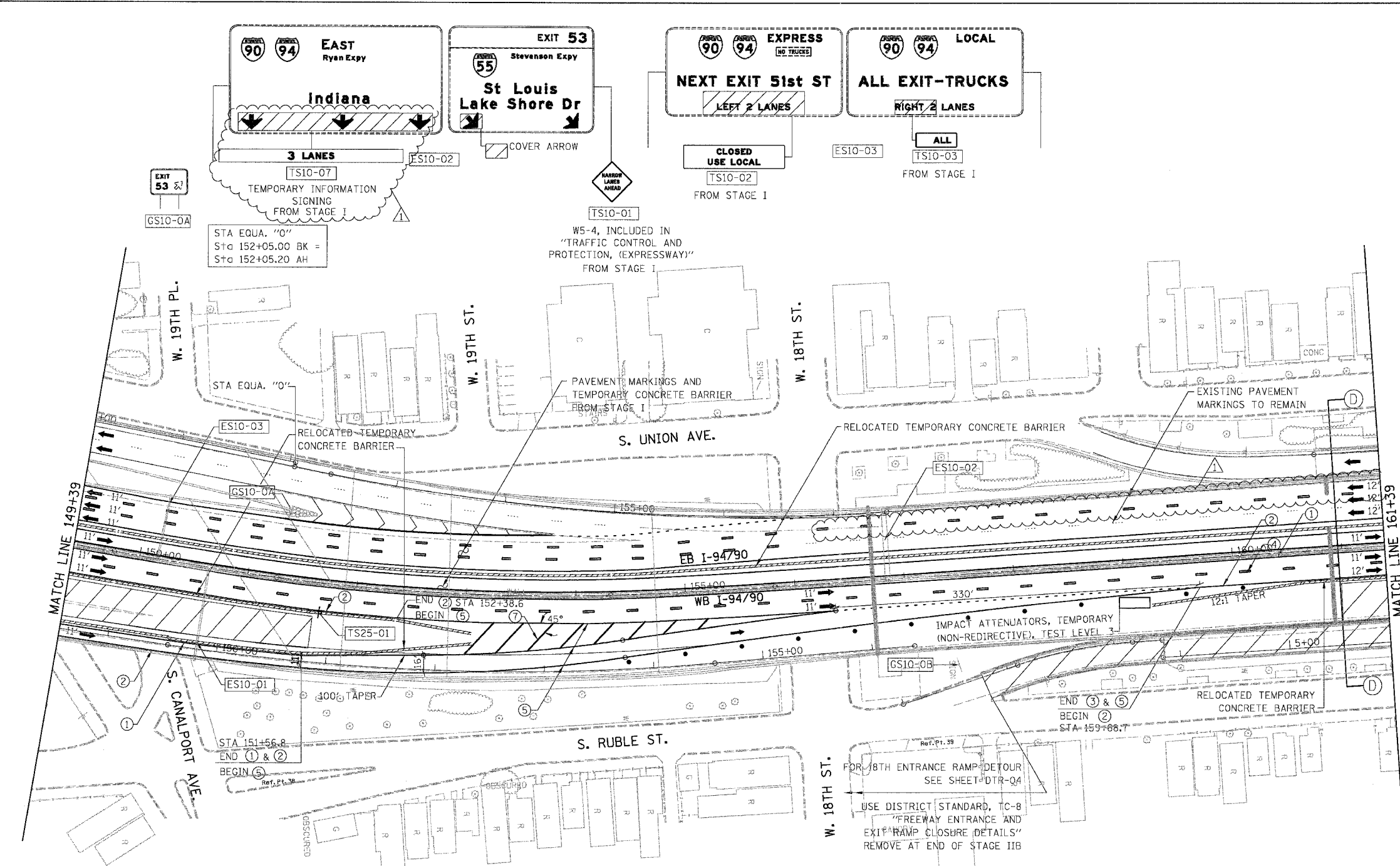
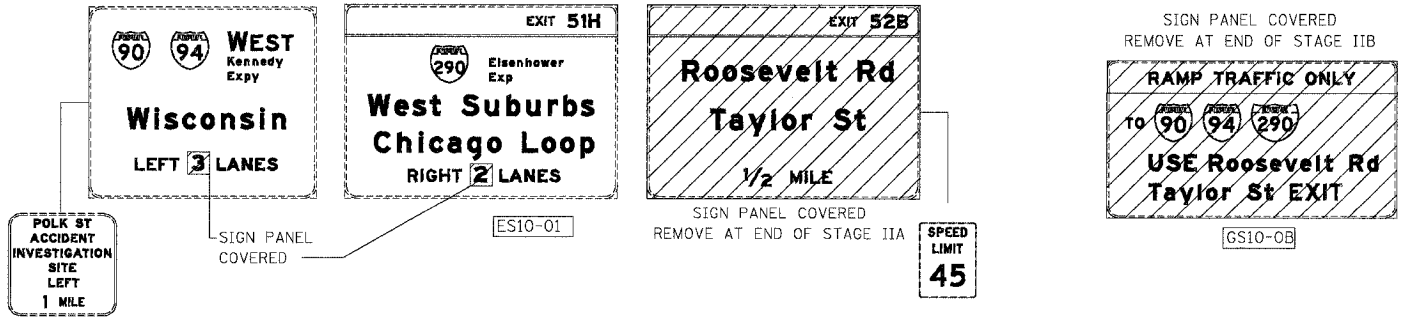


F.A.I.	SECTION	COUNTY	TOTAL SHEETS	SHEET NO.
94/90	2003-028F	COOK	419	57
STA.		TO STA.		
FED. ROAD DIST. NO.		ILLINOIS	FED. AID PROJECT	
62580				



LEGEND

- WORK ZONE
- DIRECTION OF TRAFFIC
- DRUM OR BARRICADE TYPE II WITH STEADY BURN LIGHT
- IMPACT ATTENUATORS, TEMPORARY (NON-REDIRECTIVE), TEST LEVEL 3
- BARRICADE TYPE III
- TEMPORARY CONCRETE BARRIER
- LINE 4" (YELLOW EDGE LINE)
- LINE 4" (WHITE EDGE LINE)
- LINE 4" (SKIP DASH, 6' SKIP - 2' DASH, WHITE)
- LINE 5" (SKIP DASH, 30' SKIP - 10' DASH, WHITE)
- LINE 8" (WHITE LINE)
- LINE 8" (SKIP DASH, 12' SKIP - 3' DASH, WHITE)
- LINE 12" (DIAGONAL, 30' C-C)
- LINE 12" (DIAGONAL, 500' C-C)
- LETTERS AND SYMBOLS
- EXISTING OVERHEAD OR CANTILEVER SIGNS
- EXISTING POST MOUNTED SIGNS
- TEMPORARY SIGNS



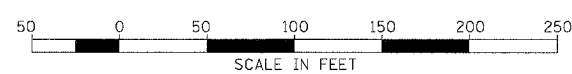
NOTE:
WB I-94/90 TEMPORARY PAVEMENT MARKINGS INSTALLED IN STAGE IIA TO REMAIN TO END OF STAGE IIB, UNLESS OTHERWISE SPECIFIED

NOTE:
ALL PAVEMENT MARKINGS ON THIS SHEET WILL BE PAVEMENT MARKING TAPE, TYPE III, UNLESS OTHERWISE NOTED.

REVISIONS	NAME	DATE
ADDENDUM 1		9/6/05

ILLINOIS DEPARTMENT OF TRANSPORTATION
F.A.I. 94/90 (DAN RYAN EXPRESSWAY)
NB DAN RYAN ELEVATED BRIDGE
REPAIR FROM 15TH TO 28TH STREETS
MAINTENANCE OF TRAFFIC PLAN - STAGE IIA
STA. 149+39 TO STA. 161+39

SCALE: 1"=50'
DATE: 8/12/2005
DRAWN BY: RA
CHECKED BY: RS



BOWMAN, BARRETT & ASSOCIATES INC.
CONSULTING ENGINEERS
Chicago, Illinois
312.228.0100
www.bbandainc.com

11/02/05 11:02:49 AM