

# RAMP "B" CLOSED

(WB I-94/90 EXIT TO SB I-55)

F.A.I.	SECTION	COUNTY	TOTAL SHEETS	SHEET NO.
94/90	2003-028F	COOK	419	92
STA.		TO STA.		
FED. ROAD DIST. NO.		ILLINOIS FED. AID PROJECT		
62580				



## SCHEDULE

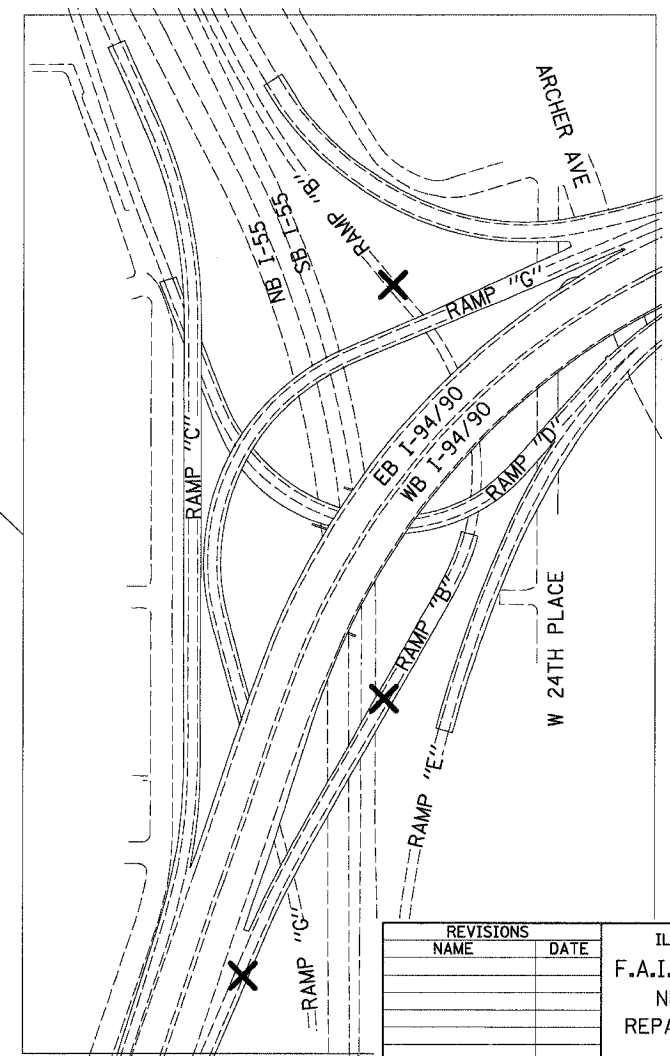
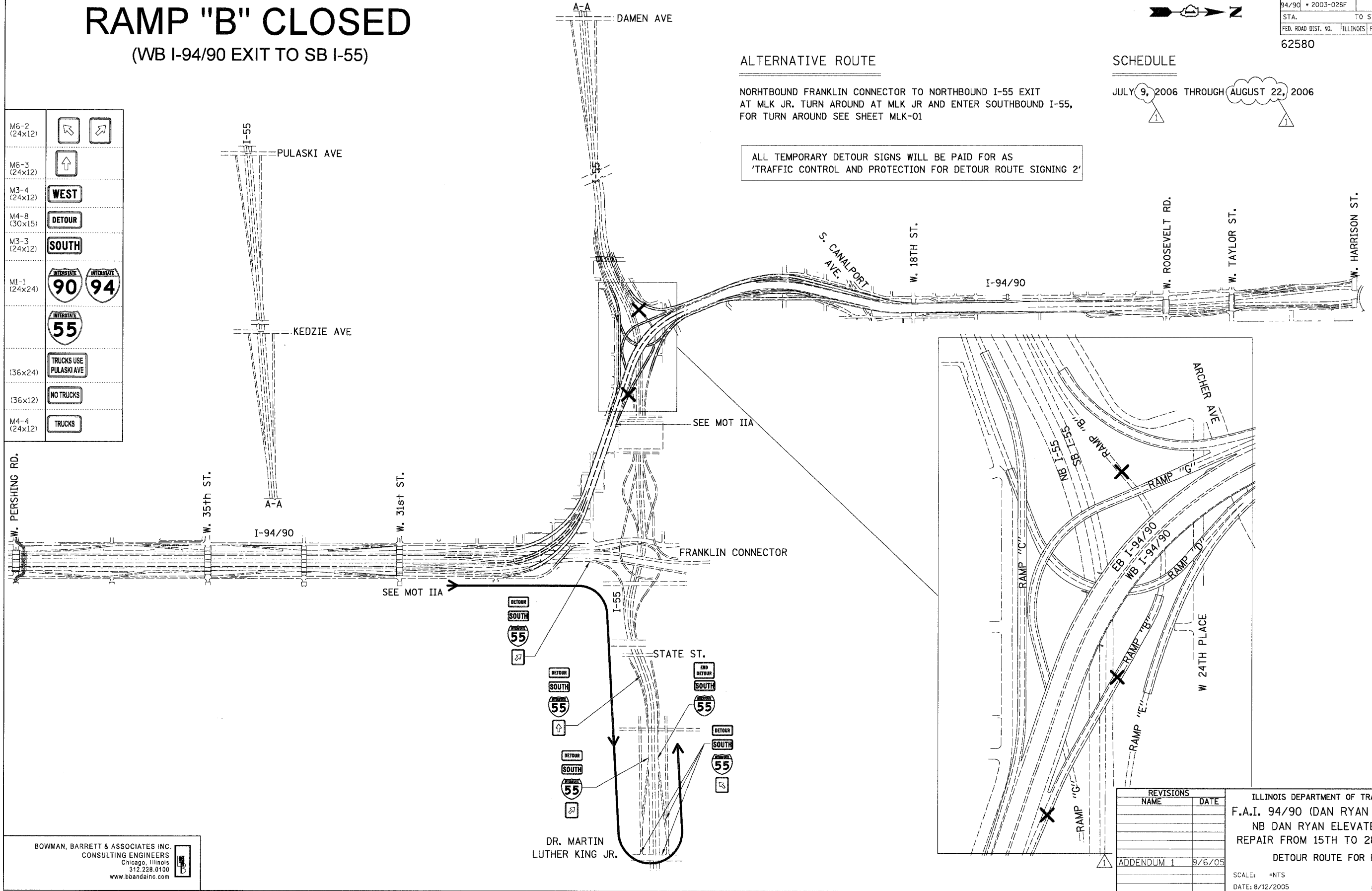
JULY 9, 2006 THROUGH AUGUST 22, 2006

## ALTERNATIVE ROUTE

NORHTBOUND FRANKLIN CONNECTOR TO NORTHBOUND I-55 EXIT AT MLK JR. TURN AROUND AT MLK JR AND ENTER SOUTHBOUND I-55, FOR TURN AROUND SEE SHEET MLK-01

ALL TEMPORARY DETOUR SIGNS WILL BE PAID FOR AS 'TRAFFIC CONTROL AND PROTECTION FOR DETOUR ROUTE SIGNING 2'

M6-2 (24x12)	
M6-3 (24x12)	
M3-4 (24x12)	<b>WEST</b>
M4-8 (30x15)	<b>DETOUR</b>
M3-3 (24x12)	<b>SOUTH</b>
M1-1 (24x24)	<b>90 94</b>
	<b>55</b>
(36x24)	<b>TRUCKS USE PULASKI AVE</b>
(36x12)	<b>NO TRUCKS</b>
M4-4 (24x12)	<b>TRUCKS</b>



REVISIONS	
NAME	DATE
ADDENDUM 1	9/6/05

DTR-02  
 ILLINOIS DEPARTMENT OF TRANSPORTATION  
 F.A.I. 94/90 (DAN RYAN EXPRESSWAY)  
 NB DAN RYAN ELEVATED BRIDGE  
 REPAIR FROM 15TH TO 28TH STREETS  
 DETOUR ROUTE FOR RAMP B  
 SCALE: =NTS  
 DATE: 8/12/2005  
 DRAWN BY: RA  
 CHECKED BY: RS

BOWMAN, BARRETT & ASSOCIATES INC.  
 CONSULTING ENGINEERS  
 Chicago, Illinois  
 312.228.0100  
 www.bbainc.com