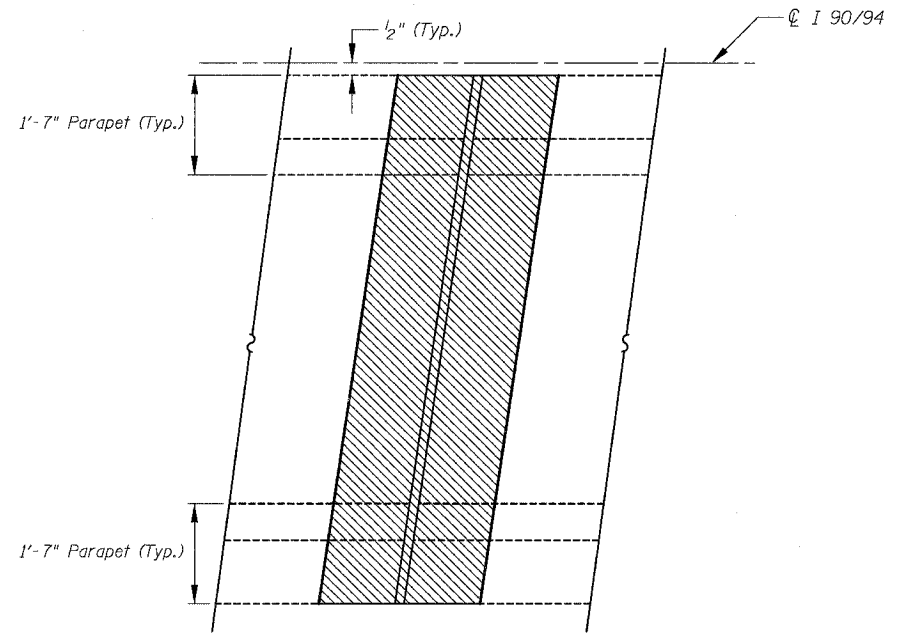
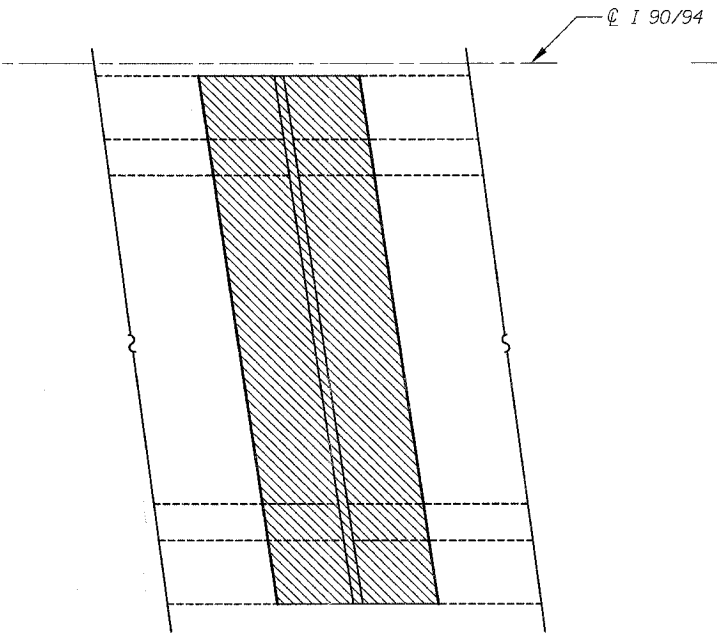


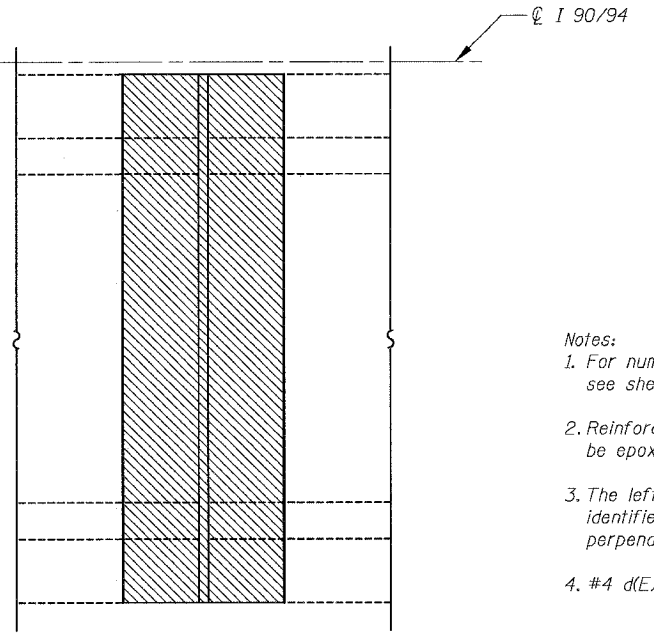
F.A.I.	SECTION	COUNTY	TOTAL SHEETS	SHEET NO.
94/90	2003-028F	COOK	419	164
STA.	TO STA.			
FED. ROAD DIST. NO.	ILLINOIS FED. AID PROJECT			
62580				



EXISTING PARTIAL PLAN (SKEWED LEFT FORWARD)

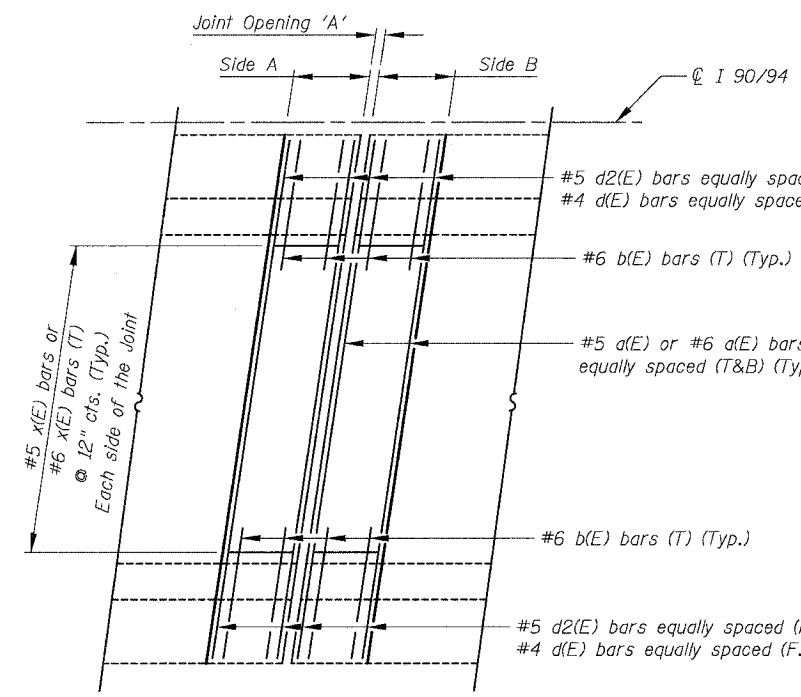


EXISTING PARTIAL PLAN (SKEWED RIGHT FORWARD)

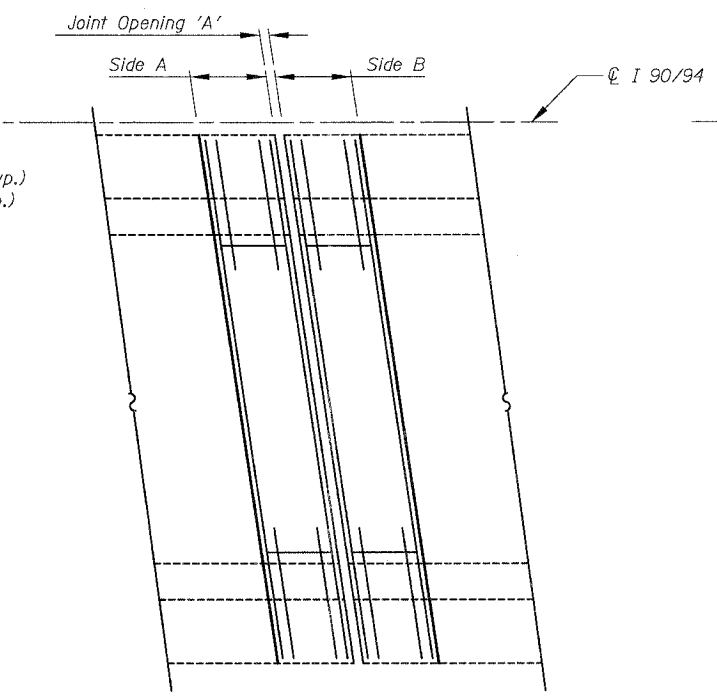


EXISTING PARTIAL PLAN (NO SKEW)

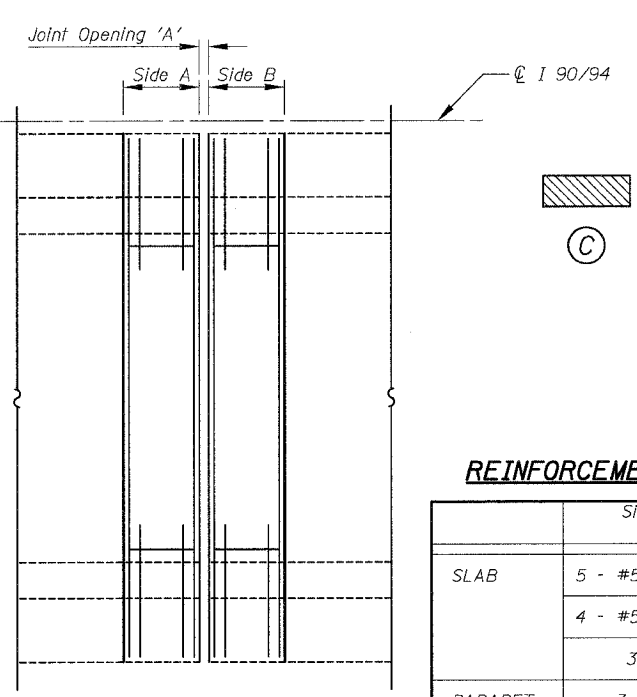
- Notes:
- For number of bars required per joint see sheets 171 to 177 for "Bar Details".
 - Reinforcement bars designated (E) shall be epoxy coated.
 - The left forward and right forward are identified as per skew angle from the perpendicular line to the CL of the roadway.
 - #4 d(E) Denotes #4 d1(E), #4 d3(E), #4 d4(E), #4 d5(E), #4 d6(E), #4 d7(E), #4 d8(E), etc.
 - Bend bars in the field as required.
 - Joint Opening 'A' is measured perpendicular to the joint.



(A) PROPOSED PARTIAL PLAN (NON-STAGED CONSTRUCTION) (SKEWED LEFT FORWARD)



(B) PROPOSED PARTIAL PLAN (NON-STAGED CONSTRUCTION) (SKEWED RIGHT FORWARD)



(C) PROPOSED PARTIAL PLAN (NON-STAGED CONSTRUCTION) (NO SKEW)

- LEGEND**
- Concrete Removal / Joint Reconstruction
 - Designation 2 Staged and Non-Staged Construction

- ABBREVIATION**
- N.F. Near Face
 - F.F. Far Face

REINFORCEMENT BARS LOCATION

	Side A or Side B (2'-0")	Side A or Side B (3'-6" or 4'-0")
SLAB	5 - #5 d(E) or #6 d(E) (T)	8 - #5 d(E) or #6 d(E) (T)
	4 - #5 d(E) or #6 d(E) (B)	6 - #5 d(E) or #6 d(E) (B)
	3 - #6 b(E) (T)	3 - #6 b(E) (T)
PARAPET	3 - #4 d(E) (F.F.)	5 - #4 d(E) (F.F.)
	3 - #5 d2(E) (N.F.)	5 - #5 d2(E) (N.F.)

REVISIONS	DATE
NAME	

ILLINOIS DEPARTMENT OF TRANSPORTATION
 F.A.I. 94/90 (DAN RYAN EXPRESSWAY)
 NB DAN RYAN ELEVATED BRIDGE
 REPAIR FROM 15TH TO 28TH STREETS
 TYPICAL PARTIAL PLAN
 AT NON-STAGED ROADWAYS

SCALE: NTS
 DATE: 8/12/2005

DRAWN BY: BDC
 CHECKED BY: BLU

BOWMAN, BARRETT & ASSOCIATES INC.
 CONSULTING ENGINEERS
 Chicago, Illinois
 312.228.0100
 www.bbainc.com

11/5/4/2 AM 8/11/2005