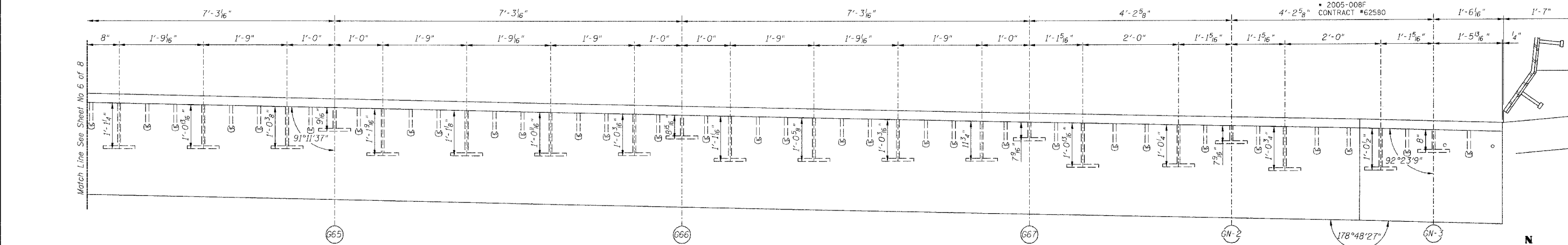


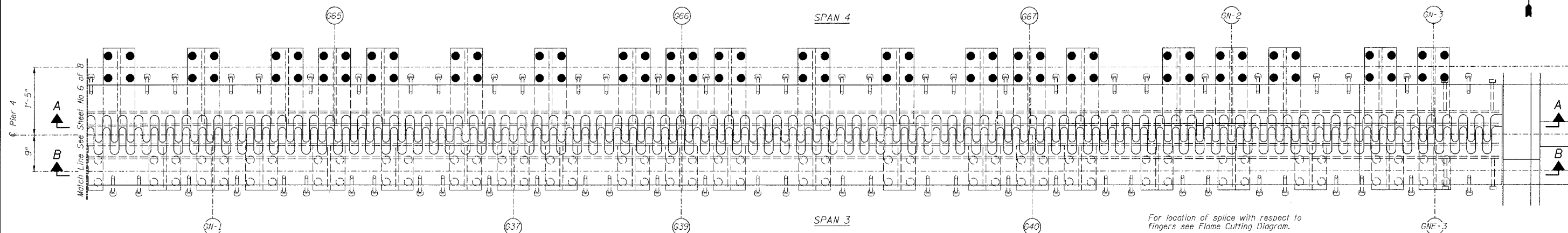
STATE OF ILLINOIS
DEPARTMENT OF TRANSPORTATION

| ROUTE NO. | SECTION | COUNTY | TOTAL SHEETS | SHEET NO. |
|---------------------|------------------|--------|--------------|-----------|
| FAI 90/94 | | COOK | 419 | 193 |
| FED. ROAD DIST. NO. | ILLINOIS PROJECT | | | |
| 2005-008F | CONTRACT #62580 | | | |

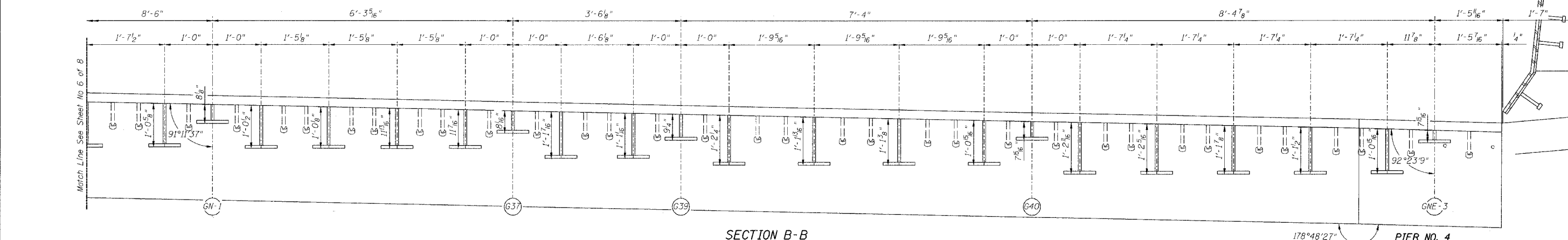
Sheet No 7
of 8 Sheets



SECTION A-A



PLAN OF FINGER PLATE AT PIER 4 (NORTHBOUND)



SECTION B-B

Note:
For optional splice detail see
Flame cutting diagram on Sheet No. 4
All dimensions, except stool heights
are given along centerline of bearing.

| REVISIONS | | | | DRAWN BY DATE | |
|-----------|------|----------|--|---------------|------|
| NO. | DATE | INITIALS | | RLK | 5/03 |
| 1 | | | | | |
| 2 | | | | | |
| 3 | | | | | |
| 4 | | | | | |
| 5 | | | | | |
| 6 | | | | | |
| 7 | | | | | |
| 8 | | | | | |
| 9 | | | | | |
| 10 | | | | | |

| | | |
|--|---------------------|------------------------------|
| STATE OF ILLINOIS DEPARTMENT OF TRANSPORTATION DIVISION OF HIGHWAYS | | PROJECT NO. 4222-3 |
| FAI RTE 90/94 | DAN RYAN EXPRESSWAY | |
| SN 016-1110 (NORTHBOUND) | | |
| SEC 2005-008F | COOK COUNTY | |
| CHASTAIN & ASSOCIATES CONSULTING ENGINEERS 8900 W. BERTY MAW AVE. SUITE 204 CHICAGO, ILLINOIS 60631 312-754-0000 FAX 312-754-0000 | | SHEET NO. |