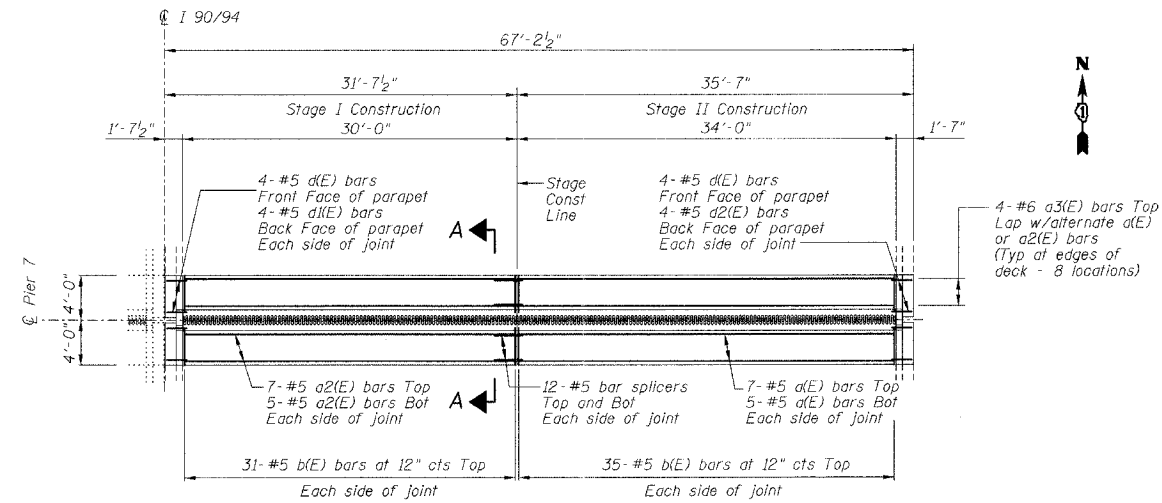


STATE OF ILLINOIS
DEPARTMENT OF TRANSPORTATION

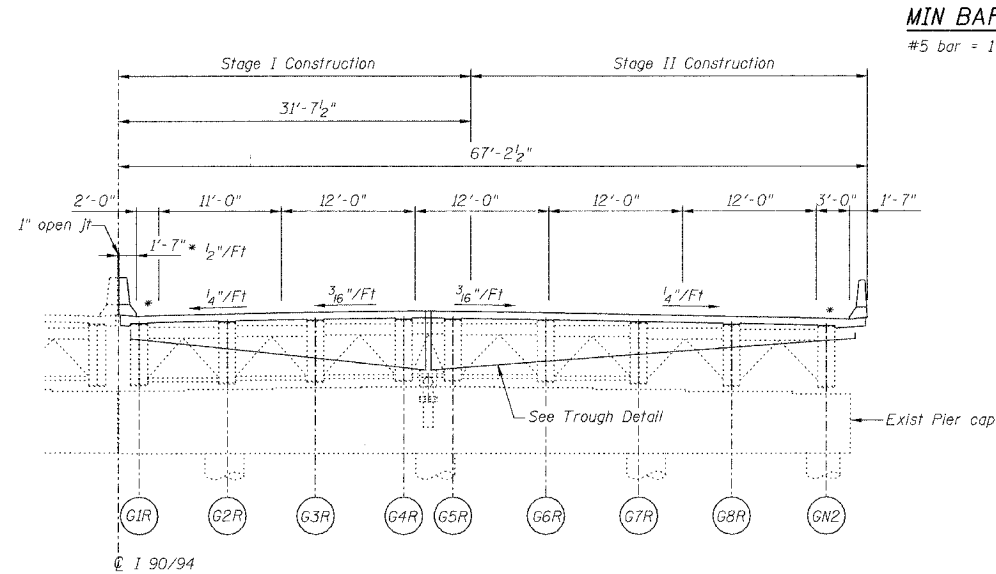
ROUTE NO.	SECTION	COUNTY	TOTAL SHEETS	SHEET NO.
FAI 90/94		COOK	419	177
FEDERAL DIST.	ILLINOIS	PROJECT		

Sheet No 3
of 8 Sheets

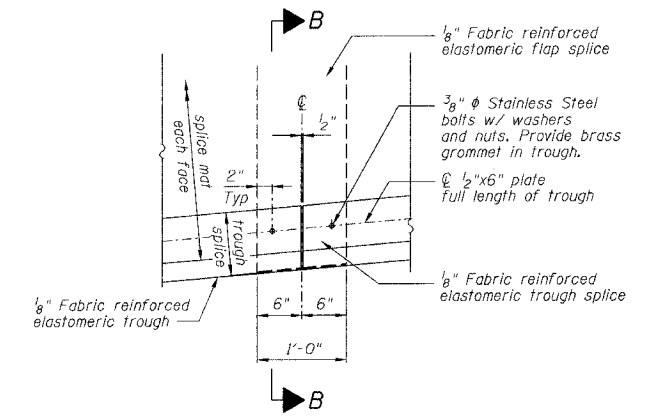
• 2005-008F
CONTRACT #62580



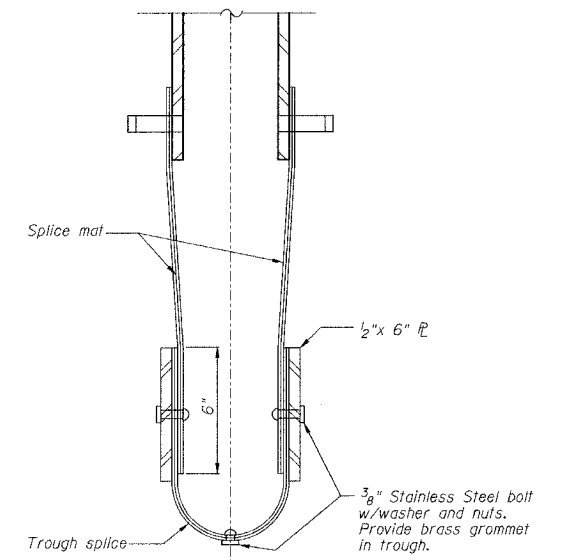
FINGER PLATE AT PIER 7 NORTHBOUND
JOINT RECONSTRUCTION PLAN AT PIER 7



PIER 7 NORTHBOUND
ELEVATION AT PIER 7 (LOOKING NORTH)

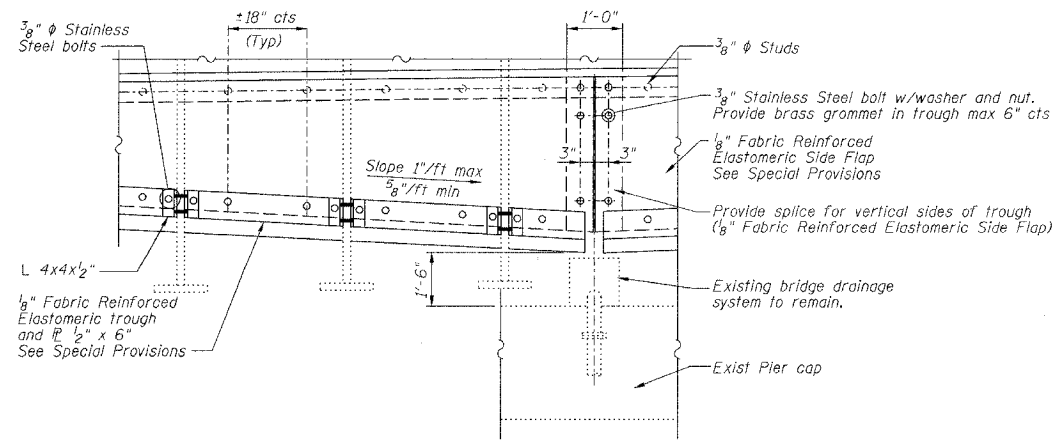


TROUGH SPLICE DETAIL



SECTION B-B

MIN BAR LAP
#5 bar = 1'-8"



TROUGH DETAIL

NOTES

For Section A-A see Sheet 4 of 8.

PIER NO. 7

FINGER PLATE EXPANSION JOINT DETAILS

REVISIONS	STATE OF ILLINOIS DEPARTMENT OF TRANSPORTATION DIVISION OF HIGHWAYS	DRAWN BY DATE RLK 5/03
1		CHECKED BY DATE SDS 5/03
2		BOOK NUMBER
3	FAI RTE 90/94 DAN RYAN EXPRESSWAY	PROJECT NO.
4	SN 016-1111 (NORTHBOUND)	4222-3
5	SEC 2005-008F COOK COUNTY	SHEET NO.
6		
7		
8		
9		
10		

CHASTAIN & ASSOCIATES
CONSULTING ENGINEERS
8000 W. BURN MAWRE AVENUE
SUITE 204
CHICAGO, ILLINOIS 60631
312-714-0000
FAX 312-714-0005