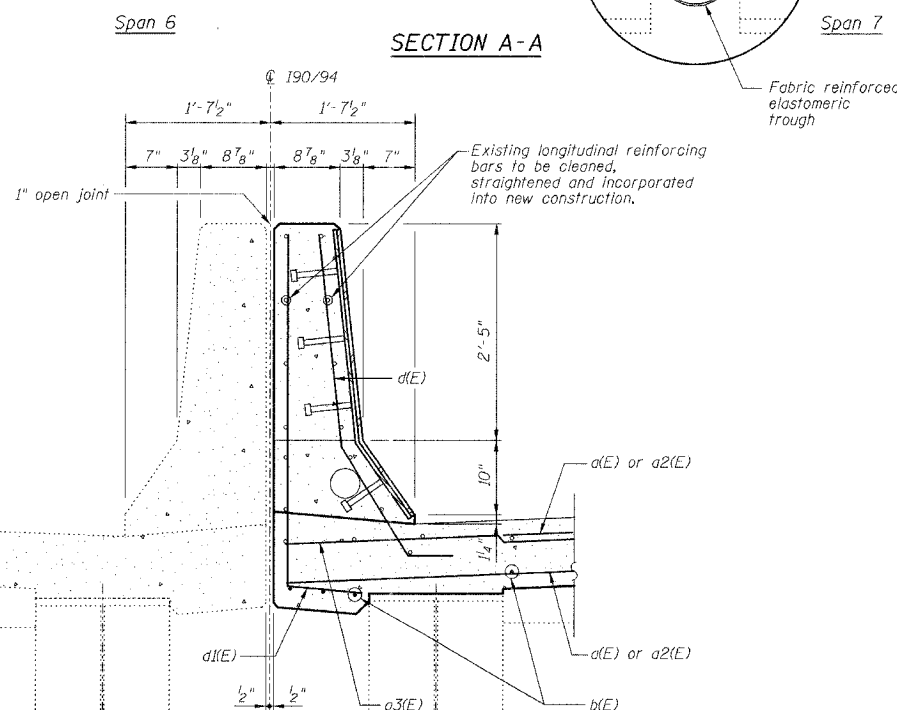
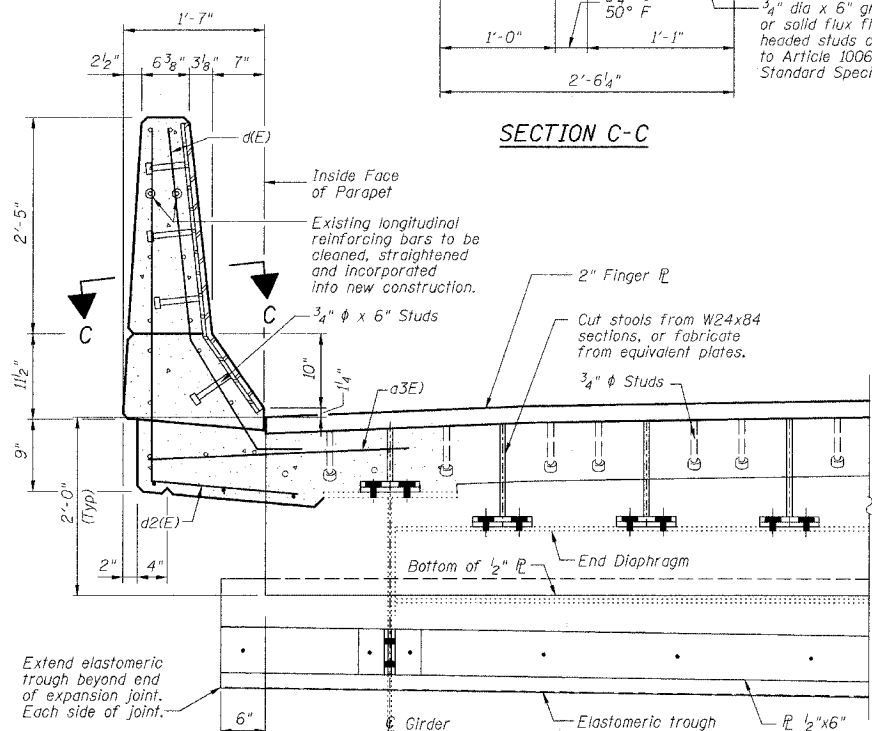
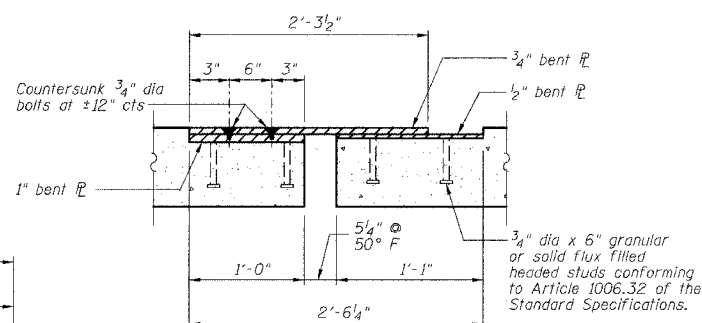
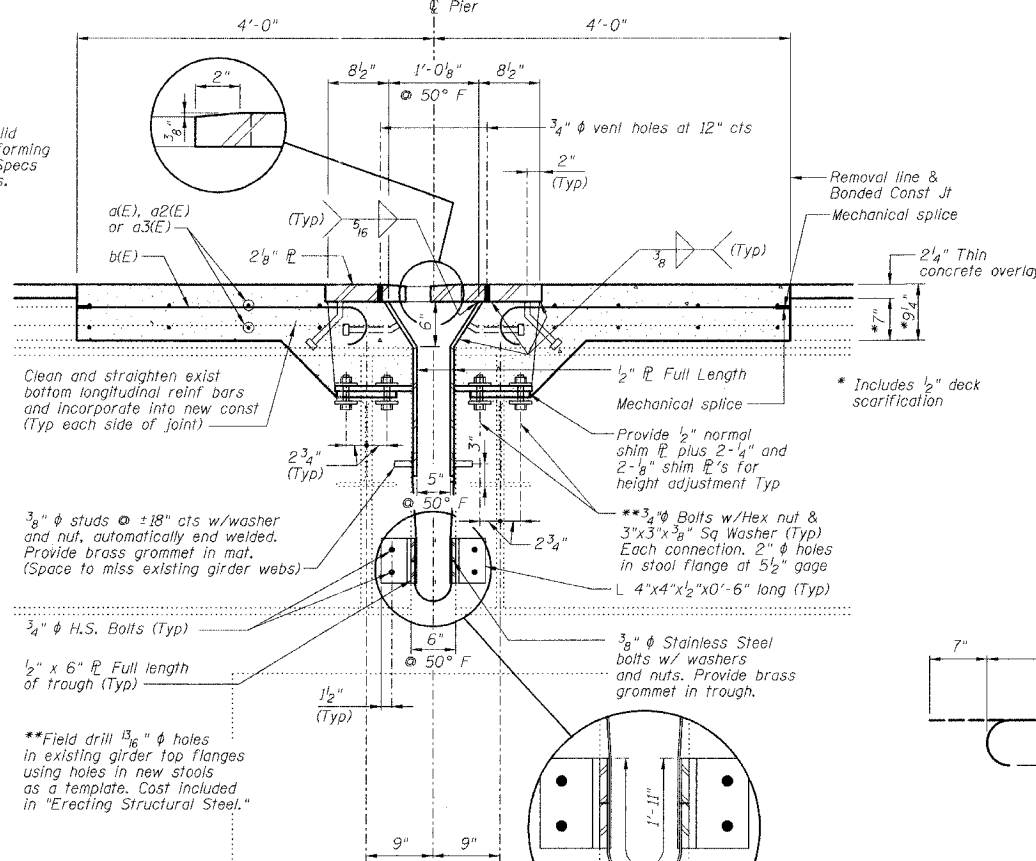
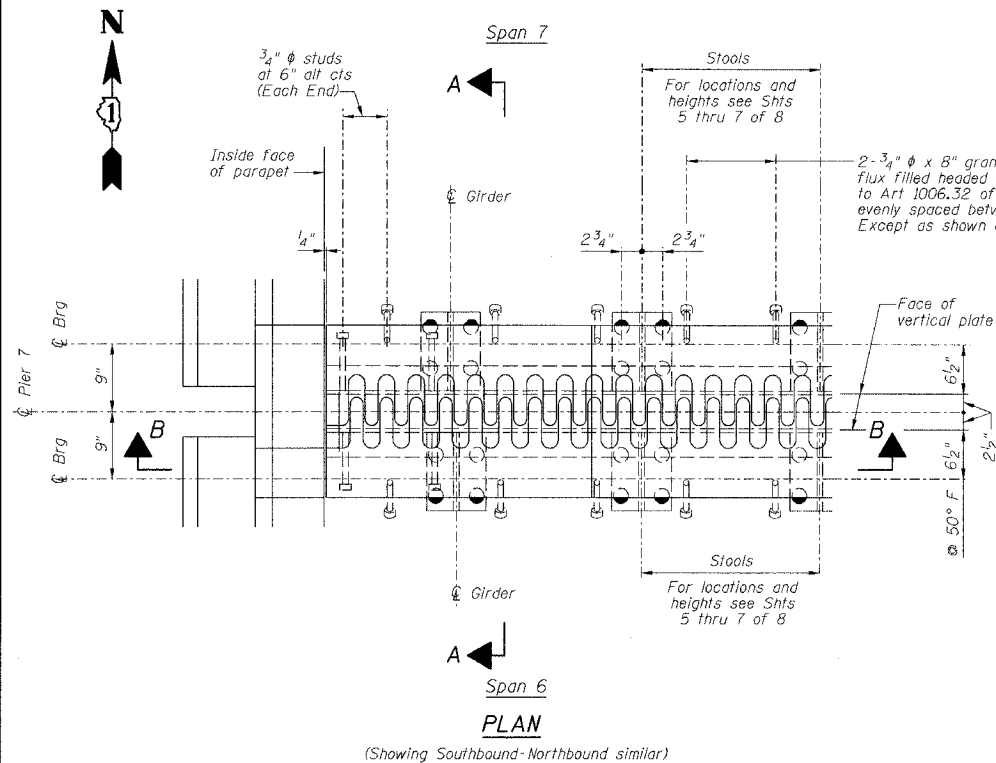


STATE OF ILLINOIS  
DEPARTMENT OF TRANSPORTATION

ROUTE NO.	SECTION	COUNTY	TOTAL SHEETS	SHEET NO.
FAI 90/94		COOK	419	118
FEDERAL DIST. NO.		ILLINOIS PROJECT		

Sheet No 4  
of 8 Sheets

2005-008F  
CONTRACT #62580



**BILL OF MATERIAL**

Bar	No.	Size	Length	Shape	
a(E)	24	#5	35'-0"	—	
a2(E)	24	#5	31'-0"	—	
a3(E)	16	#6	4'-6"	—	
b(E)	132	#5	3'-10"	—	
d(E)	16	#5	4'-3"	—	
d1(E)	8	#5	5'-2"	—	
d2(E)	8	#5	5'-10"	—	
Reinforcement Bars, Epoxy Coated				Pound	2460
Concrete Removal				Cu Yd	17.3
Concrete Superstructure				Cu Yd	20.1
Bar Splicers				Each	24
Mechanical Splice				Each	132

Reinforcing bars designated (E) shall be epoxy coated.

- NOTES**
- The Contractor shall bolt the Stools of the Fingerplate Joint Assembly to the top of existing End Cross Frames and to the top of the existing girders, as shown in Section A-A of this drawing.
  - Stainless steel bolts, washers and nuts shall meet the requirements of ASTM A193.
  - The installation of all necessary hardware, stainless steel bolts, studs and washers, plates and angles shall be included with "Erecting Structural Steel".
  - Expansion Length = 418.6'

PIER NO. 7

**FINGER PLATE EXPANSION JOINT DETAILS**

REVISIONS	STATE OF ILLINOIS DEPARTMENT OF TRANSPORTATION DIVISION OF HIGHWAYS	DRAWN BY DATE RLK 5/03
1	FAI RTE 90/94 DAN RYAN EXPRESSWAY	CHECKED BY DATE SDS 5/03
2	SEC 2005-008F SN 016-1111 (NORTHBOUND)	BOOK NUMBER
3	COOK COUNTY	PROJECT NO.
4		4222-3
5		SHEET NO.
6		
7		
8		
9		
10		

CHASTAIN & ASSOCIATES  
CONSULTING ENGINEERS

8600 W. BRYN MAWR AVENUE  
SUITE 204  
CHICAGO, ILLINOIS 60618  
312-714-0080  
FAX: 312-714-9065