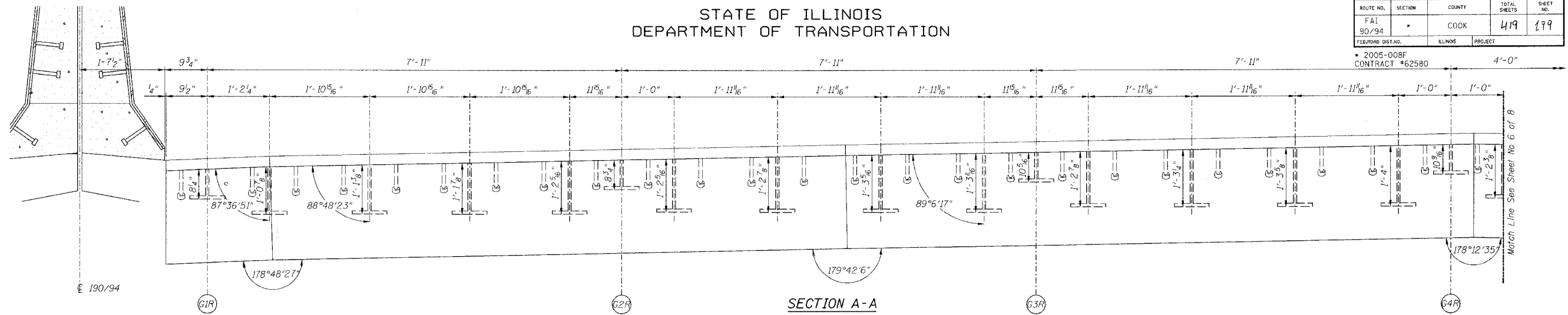


STATE OF ILLINOIS
DEPARTMENT OF TRANSPORTATION

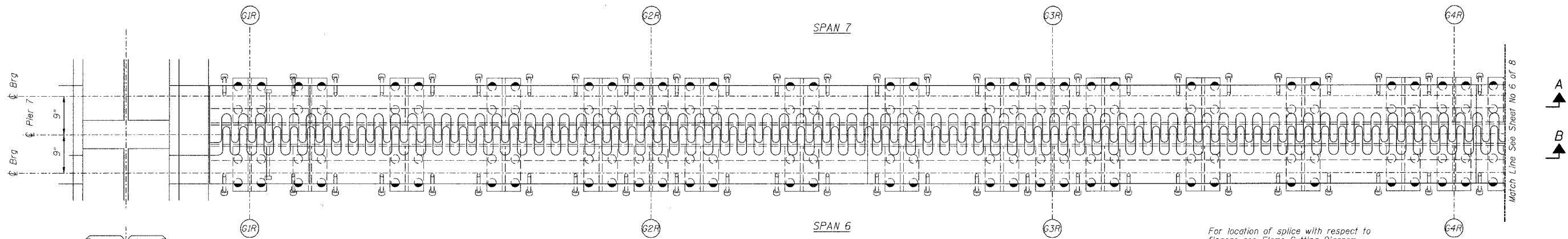
ROUTE NO.	SECTION	COUNTY	TOTAL SHEETS	SHEET NO.
FAI 90/94	*	COOK	419	199
FED. ROAD DIST. NO.	ILLINOIS	PROJECT		

Sheet No. 5
of 8 Sheets

* 2005-008F
CONTRACT #62580

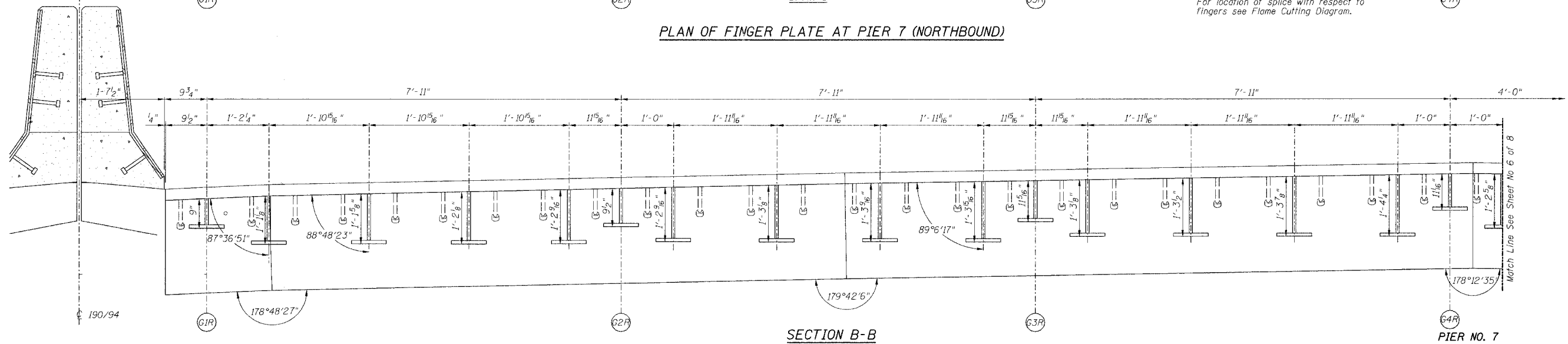


SECTION A-A



PLAN OF FINGER PLATE AT PIER 7 (NORTHBOUND)

For location of splice with respect to fingers see Flame Cutting Diagram.



SECTION B-B

Note:
For optional splice detail see
Flame cutting diagram on Sheet No. 4

REVISIONS			STATE OF ILLINOIS DEPARTMENT OF TRANSPORTATION DIVISION OF HIGHWAYS		DRAWN BY DATE
No.	DATE	INITIALS	FAI RTE 90/94	DAN RYAN EXPRESSWAY	RLK 5/03
1			SN 016-1111 (NORTHBOUND)		CHECKED BY DATE
2			SEC 2005-008F	COOK COUNTY	SDS 5/03
3					BOOK NUMBER
4					PROJECT No.
5					4222-3
6					SHEET No.
7					
8					
9					
10					

HOMER L.
CHASTAIN & ASSOCIATES
CONSULTING ENGINEERS
8800 W. BIRNY MAJOR AVENUE
SUITE 204
CHICAGO, ILLINOIS 60651
312-714-0060
FAX 312-714-0065