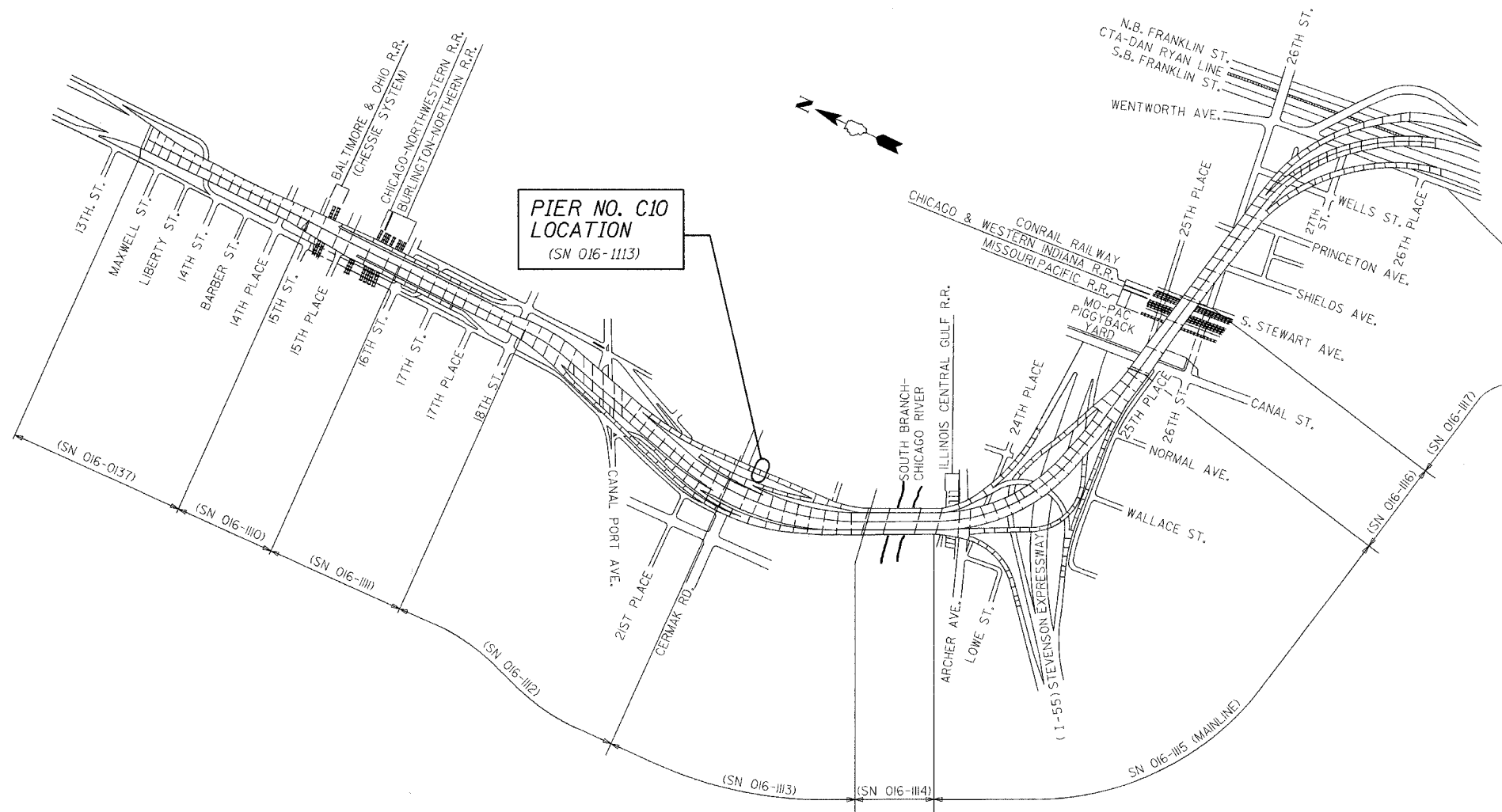


STATE OF ILLINOIS  
DEPARTMENT OF TRANSPORTATION

ROUTE NO.	SECTION	COUNTY	SHEET	TOTAL SHEETS
FA1 90/94	4	COOK	419	226
FED. ROAD DIST. NO.	ILLINOIS		FED. AID PROJECT	

SHEET NO. 1  
8 SHEETS

\* 2005 - 008F  
Contract #62580



**GENERAL NOTES**

Fasteners shall be high strength bolts. Bolts  $\frac{3}{4}$ "  $\phi$ , open holes  $\frac{13}{16}$ "  $\phi$ , unless otherwise noted.  
 Finger Plate Expansion Joints shall be assembled in the proper position with the ends in place and shall be left assembled for shop inspection.  
 The finger plates shall be flame cut as provided in Article 505.04(k) of the Standard Specifications.  
 Field welding of construction accessories will not be permitted to beams or girders.  
 Reinforcement bars shall conform to the requirements of AASHTO M 31 or M 322 Grade 60.  
 Plan dimensions and details relative to existing structure have been taken from existing plans and are subject to nominal construction variations. It shall be the Contractor's responsibility to verify such dimensions and details in the field and make necessary approved adjustments prior to construction or ordering of materials. Such variations shall not be cause for additional compensation for a change in the scope of the work, however, the Contractor will be paid for the quantity actually furnished at the unit price for the work.  
 Prior to pouring the new concrete deck, all loose rust, loose mill scale, and other loose potentially detrimental foreign material shall be removed from the surfaces of the beams or girders in contact with concrete. The cost of this work will be included in the pay item covering removal of the existing concrete. All heavy rust and other tightly adhered potentially detrimental foreign matter shall also be removed from the surfaces of the beams or girders in contact with concrete. Tightly adhered paint may remain unless otherwise noted. This removal shall be accomplished by methods that will not damage the steel. The cost of this work will be paid for according to Article 109.04.  
 The existing structural steel coating contains lead. The Contractor shall take appropriate precautions to deal with the presence of lead on this project.  
 All Construction joints shall be bonded.  
 Existing design and fabrication plans are available upon request.  
 All structural steel shall be AASHTO M270 Grade 50 unless noted otherwise. Calculated weight = 14,440 lbs.  
 Tapered shims shall be added under the stools as required by the Engineer to make a smooth finger joint.  
 Joint openings shall be adjusted according to Article 503.10(c) of the standard specifications when the deck is poured at an ambient temperature other than 50°F.  
 Existing structural steel that will be in contact with new structural steel shall be cleaned and painted prior to erection as required by the Special Provision "Cleaning and Painting Contact Surface Areas of Existing Steel Structures".  
 Traffic to be maintained during construction, see Roadway Plans for Stage Construction Details.

**KEY PLAN**  
DAN RYAN EXPRESSWAY (I-90/I-94) VIADUCT  
COOK COUNTY, ILLINOIS

**DESIGN STRESSES**

$f'_c$  = 3500 psi  
 $f_y$  = 60,000 psi (Reinf)  
 $f_y$  = 50,000 psi (M270 Grade 50)

**BILL OF MATERIAL**

ITEM	UNIT	TOTAL
Concrete Removal	Cu Yd	9.4
Concrete Superstructure	Cu Yd	11.2
Erecting Structural Steel	L.S.	0.05
Reinforcement Bars, Epoxy Coated	Pound	1600
Mechanical Splice	Each	80
Bar Splicers	Each	24
Erecting Fabric Reinforced Elastomeric Trough	Foot	39



Expires: 11/30/06

8-3-05

FILE NAME = \$FILES\$  
 PLOT SCALE = \$PLOTSCALE\$  
 PLOT DATE = 8/27/2005 10:41 AM  
 OPERATOR = mitchell

REVISIONS	
NAME	DATE

ILLINOIS DEPARTMENT OF TRANSPORTATION  
**KEY PLAN**  
 F.A.I. ROUTE 90/94 NORTHBOUND (DAN RYAN EXPRESSWAY)  
 OVER SOUTH BRANCH - CHICAGO RIVER  
 COOK COUNTY  
 S.N. 016-1113 - PIER C10

SCALE: VERT. \_\_\_\_\_  
 HORIZ. \_\_\_\_\_  
 DATE: 2/17/05  
 DRAWN BY: HEBERLING  
 DESIGNED BY: SANFORD  
 CHECKED BY: \_\_\_\_\_

**GREENE & BRADFORD, INC.**  
 OF SPRINGFIELD  
 PROFESSIONAL ENGINEERS  
 LICENSE NO. 081-005468  
 PROFESSIONAL & STRUCTURAL DESIGN CORPORATION  
 1001 E. MAIN ST. SUITE 202 ST. LOUIS, MO 63103  
 COMPUTER FILE NO. 04286-W04-KEY  
 PROJECT 04286-W04  
 8/3/05-MML