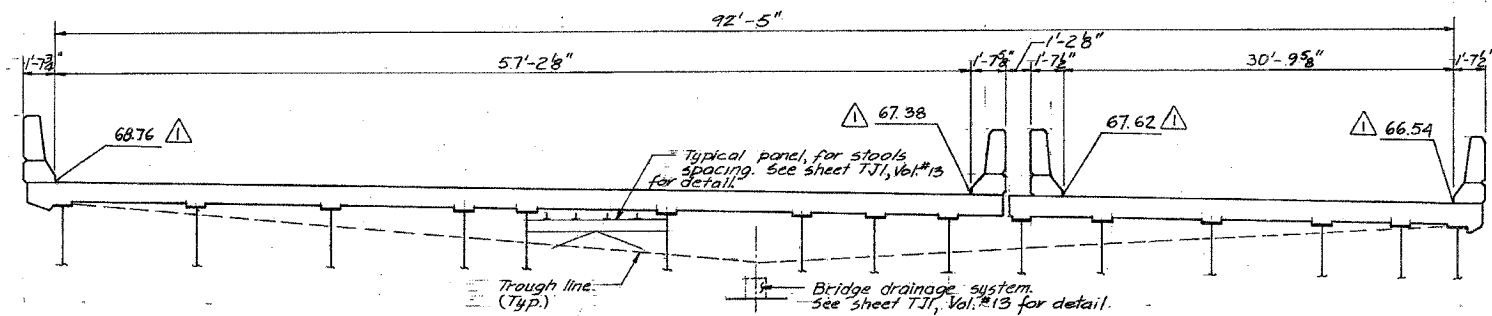
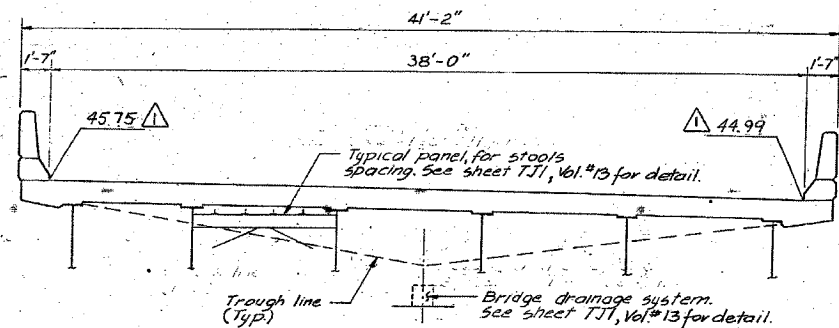


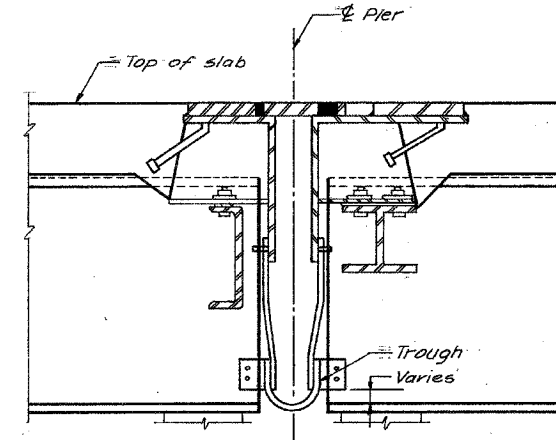
F.A.I.	SECTION	COUNTY	TOTAL SHEETS	SHEET NO.
94/90	2003-028F	COOK	419	320
STA.	TO STA.			
FED. ROAD DIST. NO.	ILLINOIS	FED. AID PROJECT		
62580				



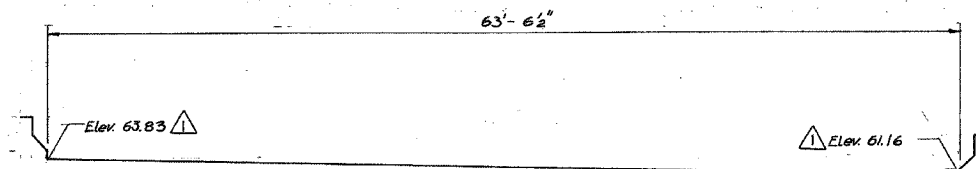
**EXPANSION JOINT AT PIER No.1**  
4 1/2" FINGER PLATE WITH TROUGH



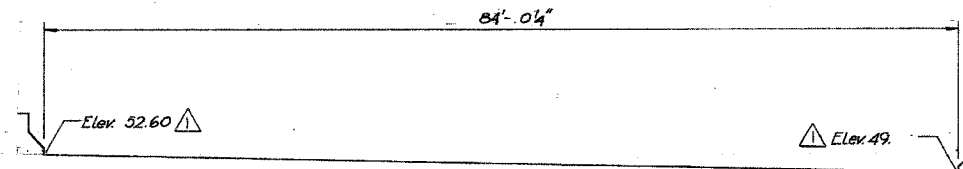
**PIER No. C10**  
**EXPANSION JOINT AT PIER No.1 & No. C10**  
4 1/2" FINGER PLATE WITH TROUGH



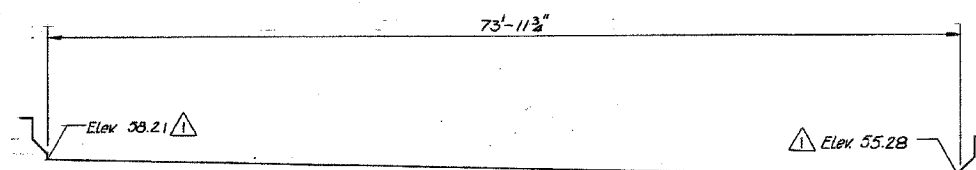
**FINGER PLATE EXPANSION JOINT**  
(TYPICAL CROSS-SECTION)  
See TJI, Vol. #13 for Detail



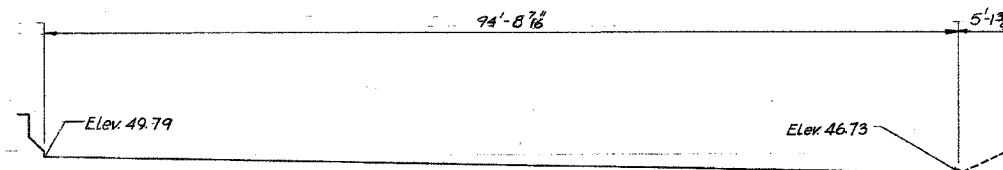
**AT PIER No.3**  
**2 1/2" NEOPRENE JOINT**



**AT PIER No.7**  
**2 1/2" NEOPRENE JOINT**



**AT PIER No.5**  
**2 1/2" NEOPRENE JOINT**



**AT PIER No.8**  
**4" PREFORMED JOINT SEAL**

Note:  
All Joints are looking North.

12-1-88

SHEET E 37 OF 88

REVISIONS	
Name	Date

STATE OF ILLINOIS  
DEPARTMENT OF TRANSPORTATION  
F.A.I. ROUTE 90/94 (DAN RYAN EXPRESSWAY)  
SECTION 1985-077 B-R COOK COUNTY  
N.B. MAINLINE RECONSTRUCTION  
STRUCTURE 016-1113  
TRANSVERSE DECK JOINT ELEVATION  
Scale: NONE  
Date: AUGUST, 1988  
Drawn By: O.O.  
Checked By: T.V.  
ENVIRODYNE ENGINEERS INC.  
Chicago, Illinois

REVISIONS	DATE

ILLINOIS DEPARTMENT OF TRANSPORTATION  
F.A.I. 94/90 (DAN RYAN EXPRESSWAY)  
NB DAN RYAN ELEVATED BRIDGE  
REPAIR FROM 15TH TO 28TH STREETS  
EXISTING PLAN INFORMATION  
SN 016-1113  
SCALE: NTS  
DATE: 10/14/2005  
DRAWN BY: BDC  
CHECKED BY: BLU

BOWMAN, BARRETT & ASSOCIATES INC.  
CONSULTING ENGINEERS  
Chicago, Illinois  
312.228.0100  
www.bbandainc.com

FOR INFORMATION ONLY