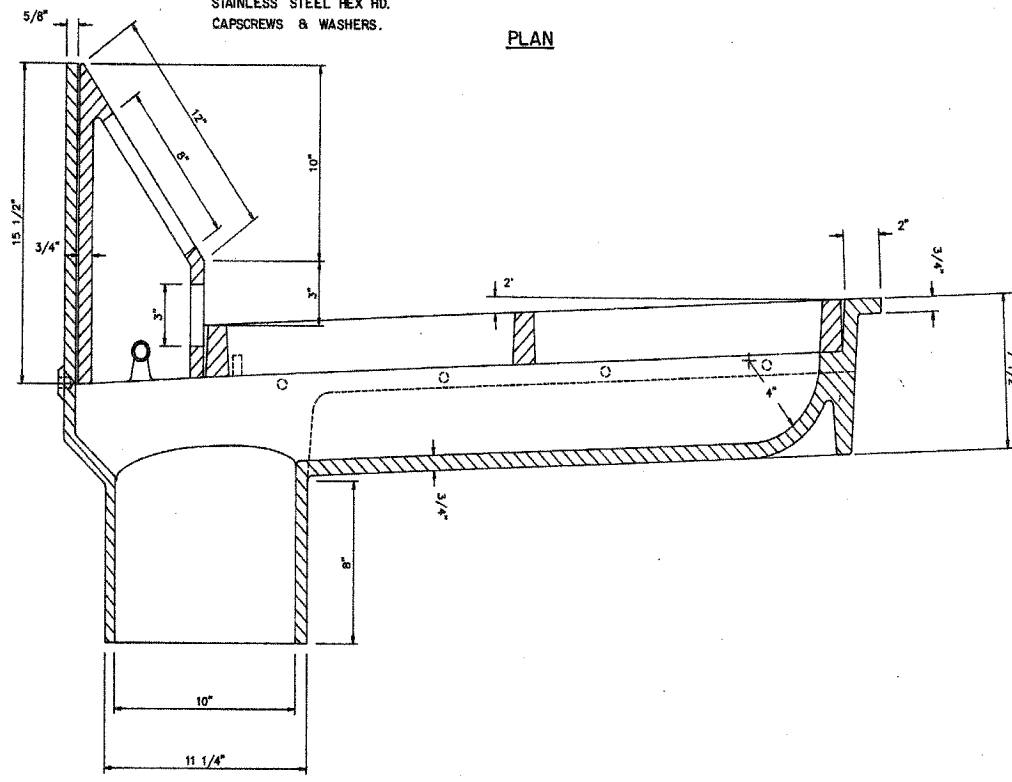


(2) DRILL & TAP FOR 5/8"-11x2 1/2" STAINLESS STEEL HEX HD. CAPSCREWS & WASHERS.

PLAN



SECTION A-A

BRIDGE SCUPPER - TYPE "C"
 NF-0332 440
 ESTIMATED WEIGHT 623#

SCHEDULE OF QUANTITIES	
STRUCTURE	No. REQUIRED
016-0137	11
016-1110	11
016-1111	12
016-1112	12
016-1113	12
016-1114	0
016-1070	4
016-1115	20
016-1140	2
016-1047	1
016-1116	8
016-1117	0
016-1118	16
TOTAL	109

ALL MATERIALS SHOWN ON THIS SHEET ARE FURNISHED UNDER A SEPARATE SUPPLY CONTRACT (SECTION 1988-004 I), UNLESS NOTED OTHERWISE.

MATERIAL: CAST GRAY IRON ASTM A-48, CLASS 35B
 FINISH: NONE

SHEET BS6 OF BS6

REVISIONS	
Name	Date

STATE OF ILLINOIS
 DEPARTMENT OF TRANSPORTATION
 F.A.I. ROUTE 90/94 (DAN RYAN EXPRESSWAY)
 SECTION 1985-077 B-R - COOK COUNTY
 N.B. MAINLINE RECONSTRUCTION
 SCUPPERS - ALL STRUCTURES
 BRIDGE SCUPPER TYPE C
 Scale: NONE Drawn By: R.E.P.
 Date: AUGUST 1988 Checked By: W.P.K.
 ENVIRODYNE ENGINEERS INC.
 Chicago, Illinois

REVISIONS	
NAME	DATE

ILLINOIS DEPARTMENT OF TRANSPORTATION
 F.A.I. 94/90 (DAN RYAN EXPRESSWAY)
 NB DAN RYAN ELEVATED BRIDGE
 REPAIR FROM 15TH TO 28TH STREETS
 EXISTING PLAN INFORMATION
 SCUPPER DETAILS - TYPE C
 SCALE: NTS DRAWN BY: BDC
 DATE: 10/14/2005 CHECKED BY: BLU

FOR INFORMATION ONLY

BOWMAN, BARRETT & ASSOCIATES INC.
 CONSULTING ENGINEERS
 Chicago, Illinois
 312.228.0100
 www.bbainc.com