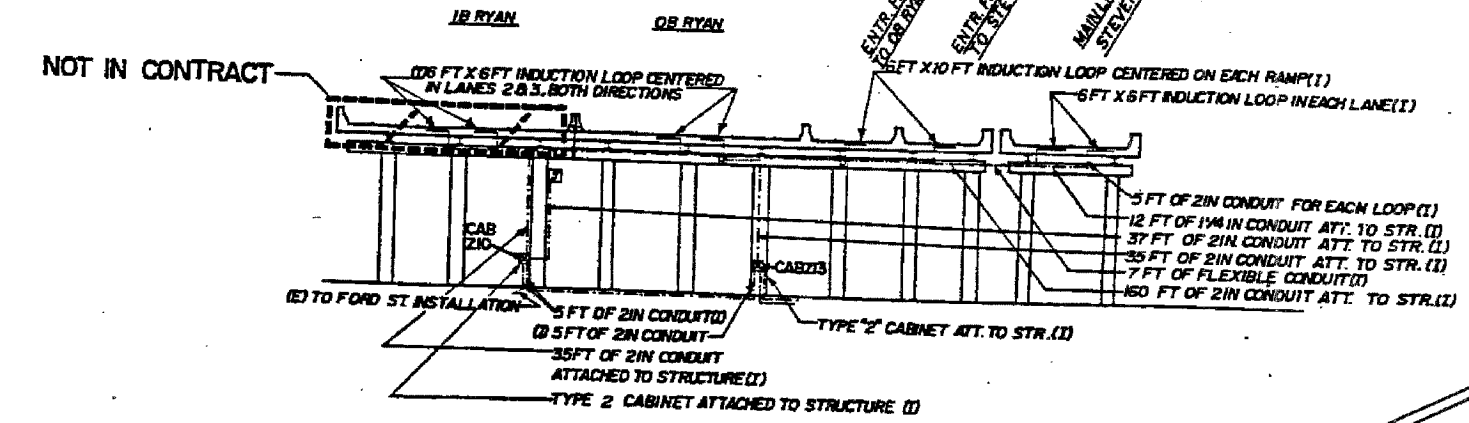
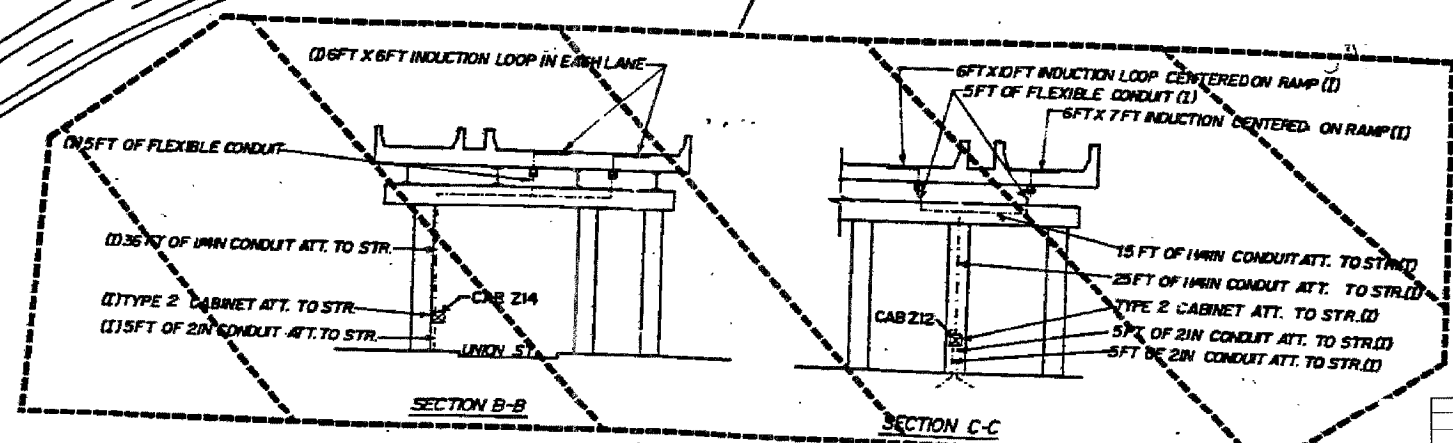


| | | | | |
|---------------------|-----------|------------------|--------------|-----------|
| F.A.I. | SECTION | COUNTY | TOTAL SHEETS | SHEET NO. |
| 94/90 | 2003-028F | COOK | 419 | 392 |
| STA. | TO STA. | | | |
| FED. ROAD DIST. NO. | ILLINOIS | FED. AID PROJECT | | |
| 62580 | | | | |



SECTION A-A



NOT IN CONTRACT

- LEGEND**
- TSC CABINET
 - INDUCTION LOOP
 - POLYETHYLENE DUCT
 - G S CONDUIT
 - JUNCTION BOX
 - (I) INSTALL
 - (E) EXISTING

TSC9

| REVISIONS | |
|-----------|------|
| NAME | DATE |
| | |
| | |
| | |
| | |
| | |
| | |
| | |
| | |
| | |

ILLINOIS DEPARTMENT OF TRANSPORTATION
 F.A.I. 94/90 (DAN RYAN EXPRESSWAY)
 NB DAN RYAN ELEVATED BRIDGE
 REPAIR FROM 15TH TO 28TH STREETS
 22nd STREET
 INSTALLATION

SCALE: NTS
 DATE: 7/22/2005

DRAWN BY: MR
 CHECKED BY: BLU

FOR INFORMATION ONLY

BOWMAN, BARRETT & ASSOCIATES INC.
 CONSULTING ENGINEERS
 Chicago, Illinois
 312 228 0100
 www.bbainc.com

TRAFFIC SYSTEMS CENTER