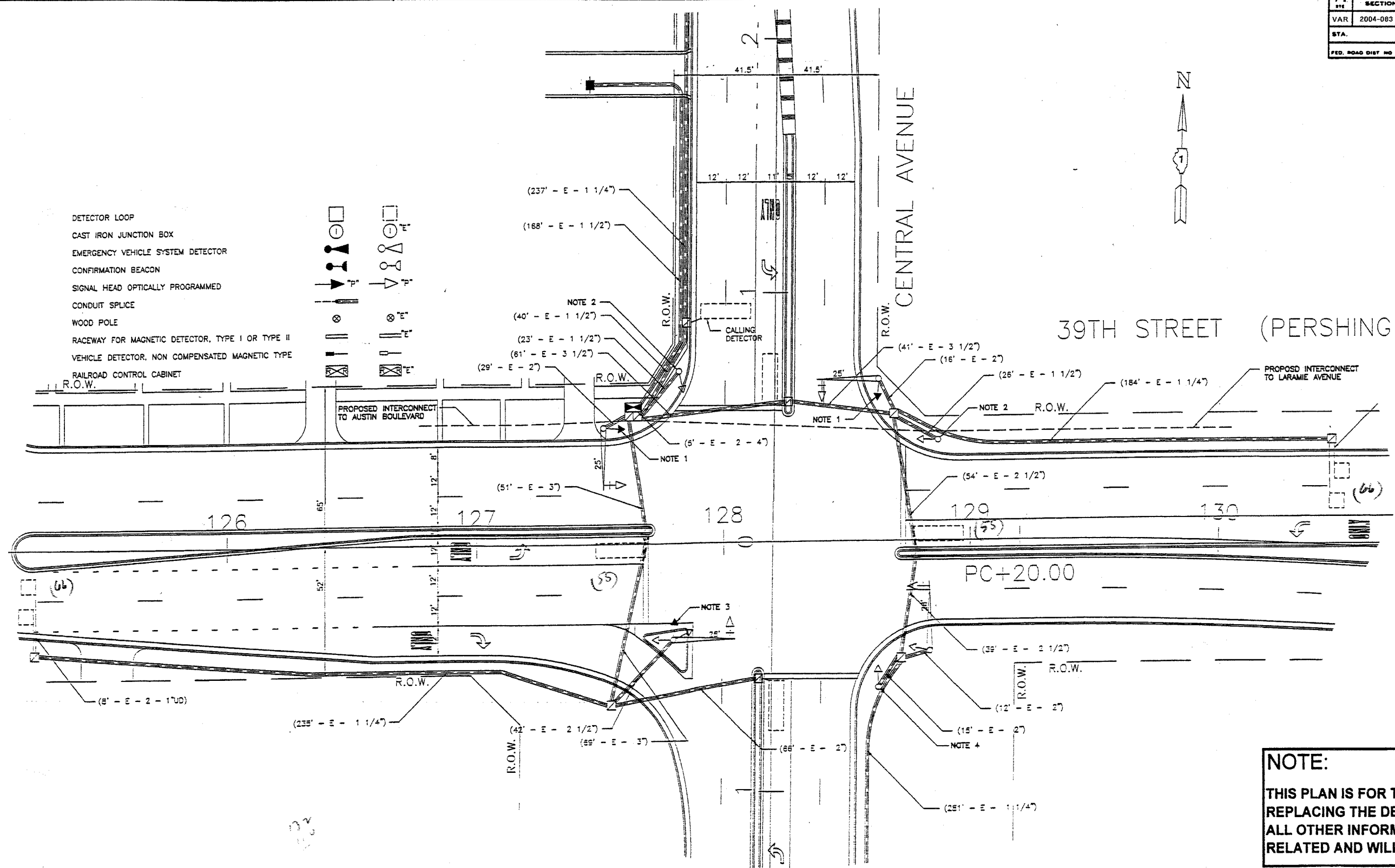
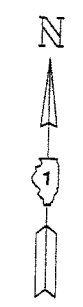
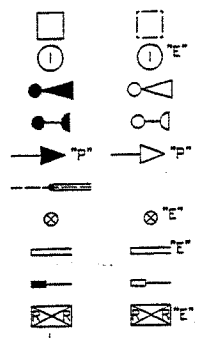


F & S	SECTION	COUNTY	TOTAL SHEETS	SHEET NO.
VAR	2004-083 I	COOK	40	29
STA.		TO STA.		
FED. ROAD DIST NO 7		ILLINOIS		FED AID PROJECT

62825



- DETECTOR LOOP
- CAST IRON JUNCTION BOX
- EMERGENCY VEHICLE SYSTEM DETECTOR
- CONFIRMATION BEACON
- SIGNAL HEAD OPTICALLY PROGRAMMED
- CONDUIT SPLICE
- WOOD POLE
- RACEWAY FOR MAGNETIC DETECTOR, TYPE I OR TYPE II
- VEHICLE DETECTOR, NON COMPENSATED MAGNETIC TYPE
- RAILROAD CONTROL CABINET



(237' - E - 1 1/4")
 (168' - E - 1 1/2")
 NOTE 2
 (40' - E - 1 1/2")
 (23' - E - 1 1/2")
 (61' - E - 3 1/2")
 (29' - E - 2")

NOTE 1

NOTE 2

NOTE 3

NOTE 4

NOTE:
 THIS PLAN IS FOR THE PURPOSE OF REPLACING THE DETECTOR LOOPS ONLY. ALL OTHER INFORMATION SHOWN IS NOT RELATED AND WILL BE DISREGARDED.

REPLACE ALL DETECTOR LOOPS AS SHOWN
 (WITHIN THE RESURFACING LIMITS)

CODE NO.	QUANTITY	UNIT	ITEM
86600600	242	Foot	Detector Loop Replacement

REVISIONS	
NAME	DATE

ILLINOIS DEPARTMENT OF TRANSPORTATION
DETECTOR LOOP REPLACEMENT
 39TH STREET @ CENTRAL AVENUE
 SCALE: 1" = 20'
 DATE: AUG. 05
 DRAWN BY: J.E.
 DESIGNED BY:
 CHECKED BY: J.E.