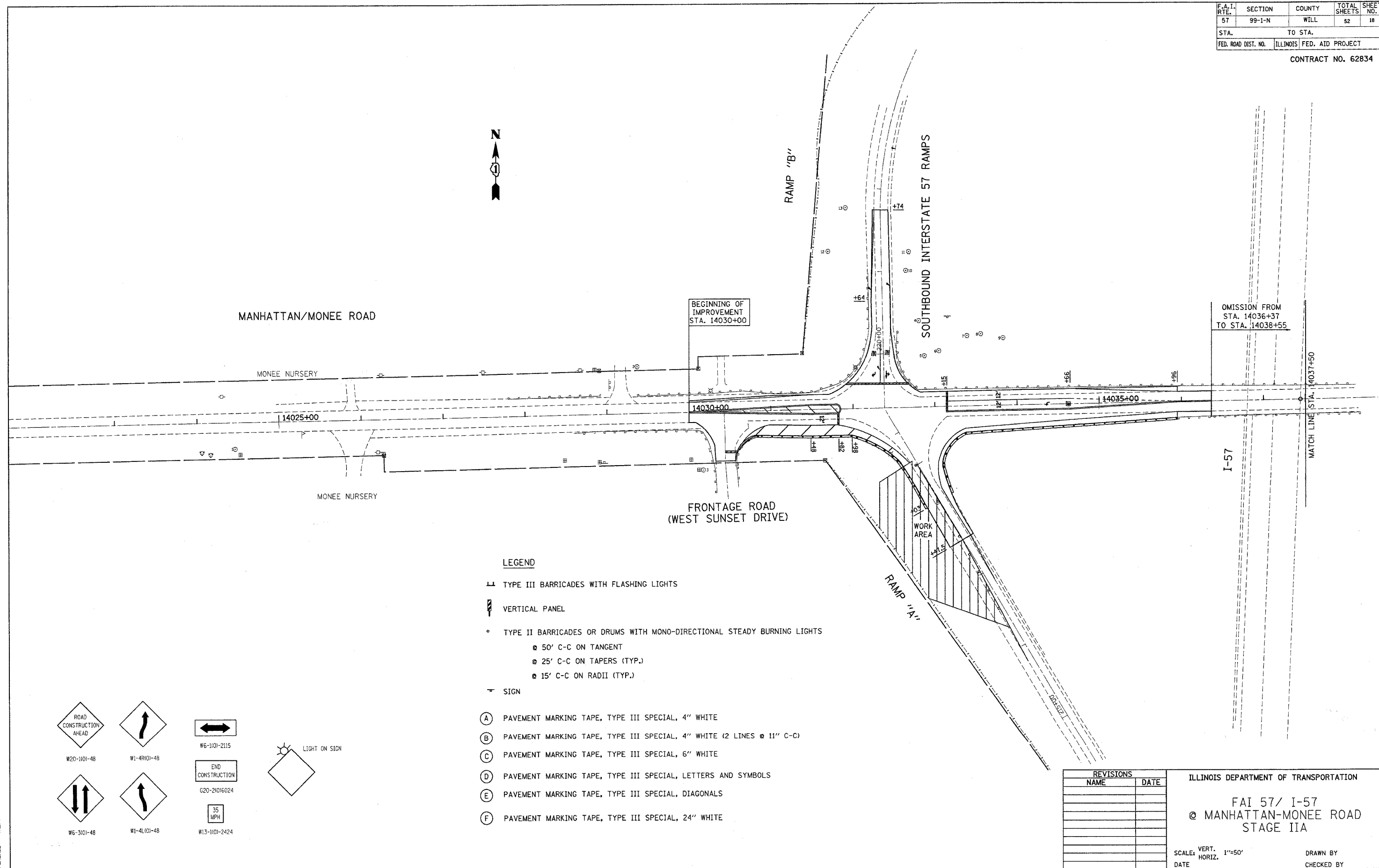


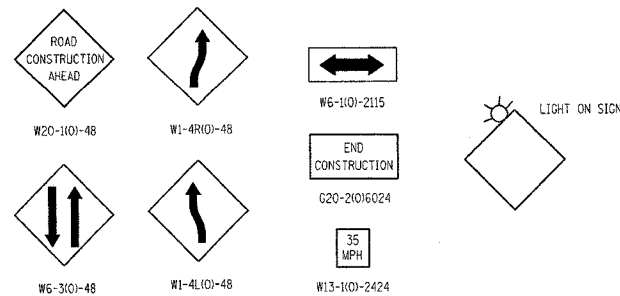
F.A.I. RTE.	SECTION	COUNTY	TOTAL SHEETS	SHEET NO.
57	99-1-N	WILL	52	18
STA.	TO STA.			
FED. ROAD DIST. NO.	ILLINOIS	FED. AID PROJECT		

CONTRACT NO. 62834



LEGEND

- ⊥ TYPE III BARRICADES WITH FLASHING LIGHTS
- ▬ VERTICAL PANEL
- TYPE II BARRICADES OR DRUMS WITH MONO-DIRECTIONAL STEADY BURNING LIGHTS
 - 50' C-C ON TANGENT
 - 25' C-C ON TAPERS (TYP.)
 - 15' C-C ON RADII (TYP.)
- ⌄ SIGN
- (A) PAVEMENT MARKING TAPE, TYPE III SPECIAL, 4" WHITE
- (B) PAVEMENT MARKING TAPE, TYPE III SPECIAL, 4" WHITE (2 LINES @ 11" C-C)
- (C) PAVEMENT MARKING TAPE, TYPE III SPECIAL, 6" WHITE
- (D) PAVEMENT MARKING TAPE, TYPE III SPECIAL, LETTERS AND SYMBOLS
- (E) PAVEMENT MARKING TAPE, TYPE III SPECIAL, DIAGONALS
- (F) PAVEMENT MARKING TAPE, TYPE III SPECIAL, 24" WHITE



REVISIONS	
NAME	DATE

ILLINOIS DEPARTMENT OF TRANSPORTATION

FAI 57/ I-57
 @ MANHATTAN-MONEE ROAD
 STAGE IIA

SCALE: VERT. 1"=50'
 HORIZ. DATE

DRAWN BY
 CHECKED BY

PLOT DATE = 9/28/2005
 FILE NAME = c:\projects\j13588\14038\man2
 REFERENCE = REF