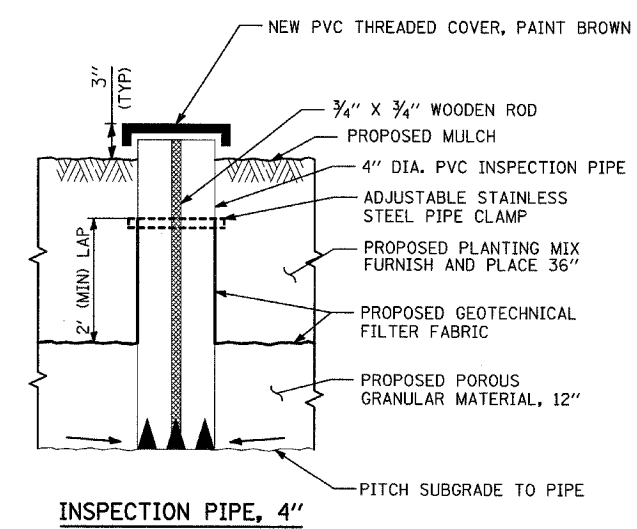
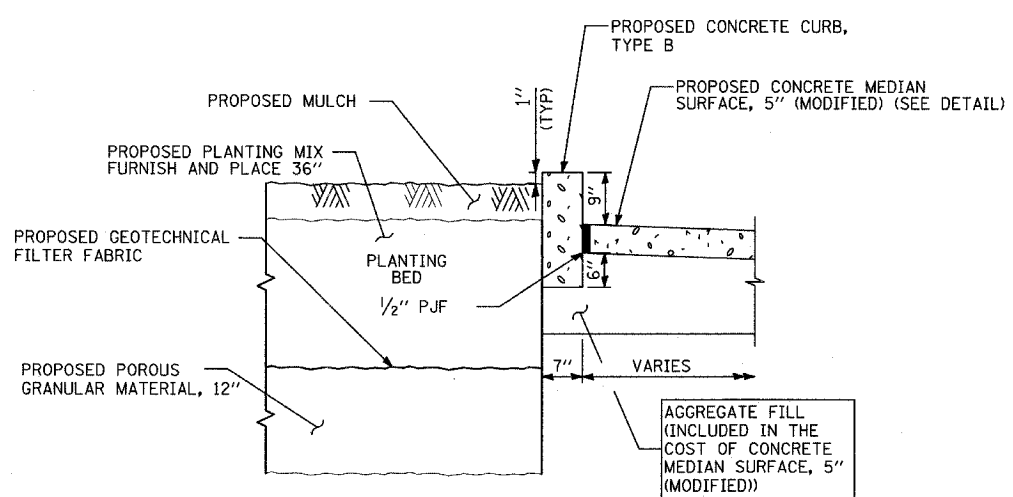
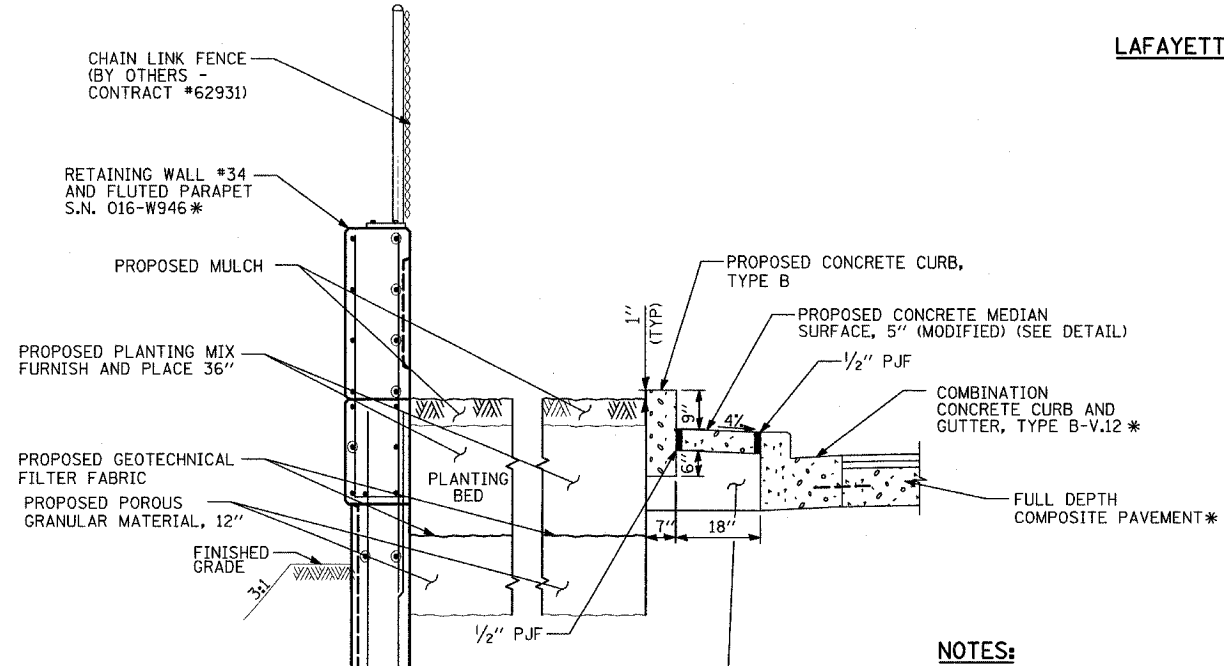


**PLANTING BED ALONG LAFAYETTE AVENUE NORTH OF 95th STREET**



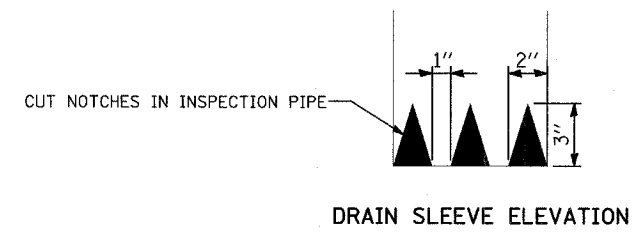
**NOTES:**

SEE SCHEDULE OF LANDSCAPE ITEMS FOR TYPE, SIZE, AND SPACING OF PLANT MATERIAL.

\* - ITEMS PROVIDED BY OTHERS - CONTRACT #62695.

COORDINATE PLACEMENT OF INSPECTION PIPE WITH LOCATION OF PROPOSED TREES AND SHRUBS.

MASTER IRRIGATION CONTROL VALVE IS TO BE INSTALLED AT THE DESIGNATED LOCATION SPECIFIED BY THE CITY OF CHICAGO DURING CONSTRUCTION AND ON PUBLIC PROPERTY.



REVISIONS	
NAME	DATE

ILLINOIS DEPARTMENT OF TRANSPORTATION  
F.A.I. 94 (DAN RYAN EXPRESSWAY)

**PLANTING BED DETAIL**  
LAFAYETTE AVENUE NORTH OF 95th STREET

SCALE: NOT TO SCALE      DRAWN BY: JDF  
DATE: SEPTEMBER 2, 2005      CHECKED BY: RTM