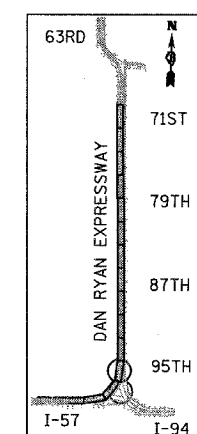
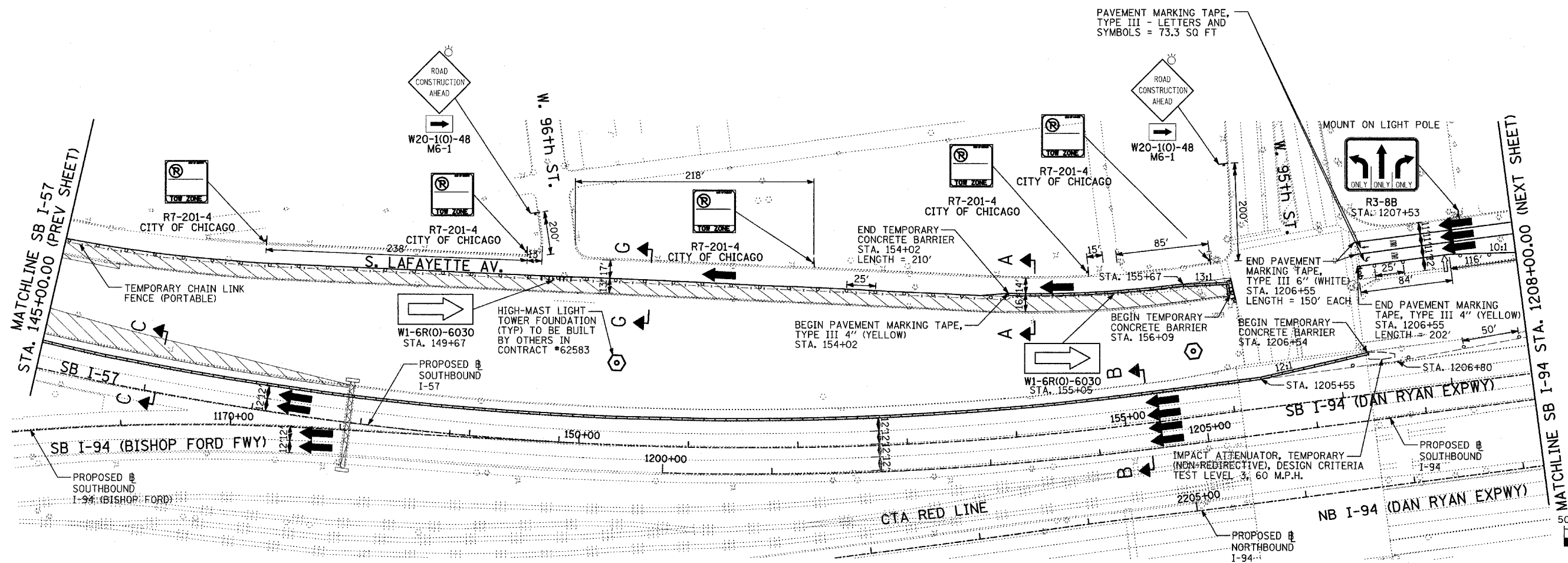
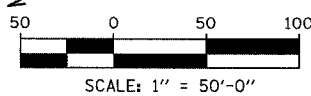


F.A.I. RTE.	SECTION	COUNTY	TOTAL SHEETS	SHEET NO.
94	*	COOK	30	27
STA. 1200+00.00 TO STA. 1330+00.00				
FED. ROAD DIST. NO.	ILLINOIS	FED. AID PROJECT		
* (1516.1, 1717 & 1818) I-4		62933		



LOCATION MAP



TYLIN INTERNATIONAL

FOR INFORMATION ONLY

- LEGEND:**
- TEMPORARY CONCRETE BARRIER
 - TRAFFIC LANE
 - WORK ZONE
 - BARRICADE, TYPE III
 - DRUM WITH MONO-DIRECTIONAL STEADY BURNING LIGHT
 - ARROW BOARD

REVISIONS	
NAME	DATE

ILLINOIS DEPARTMENT OF TRANSPORTATION
 F.A.I. 94 (DAN RYAN EXPRESSWAY)
 MAINTENANCE OF TRAFFIC PLAN -
 LAFAYETTE AVENUE SOUTH OF 95TH STREET
 SB I-57 STA. 145+00 TO SB I-94 1208+00
 CONTRACT #62695 (17B)

SCALE: 1"=50'-0"
 DATE: SEPTEMBER 2, 2005

DRAWN BY: JPA, RTM
 CHECKED BY: MAG, JPM