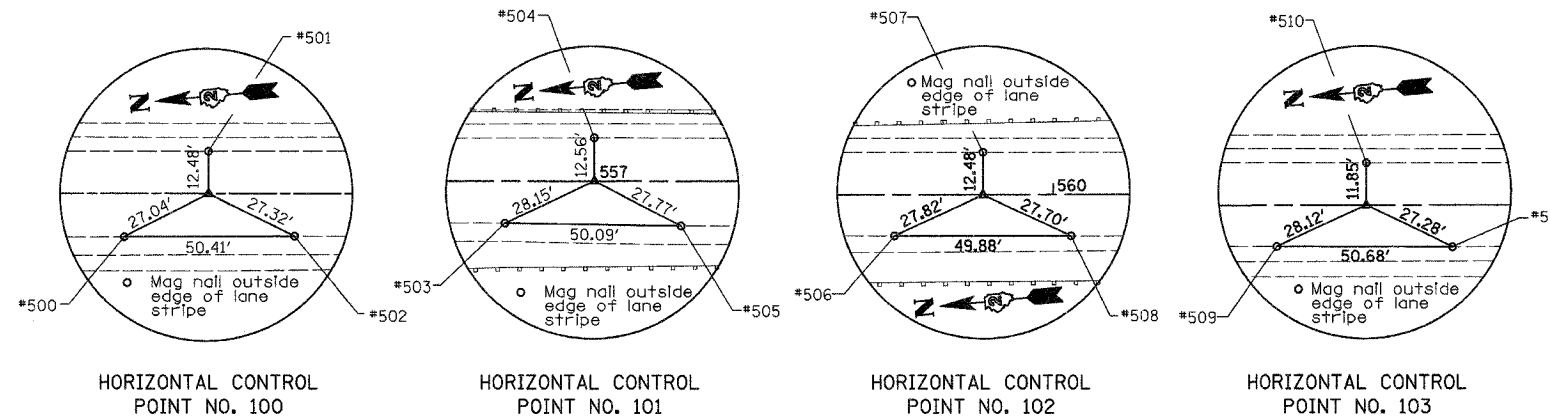


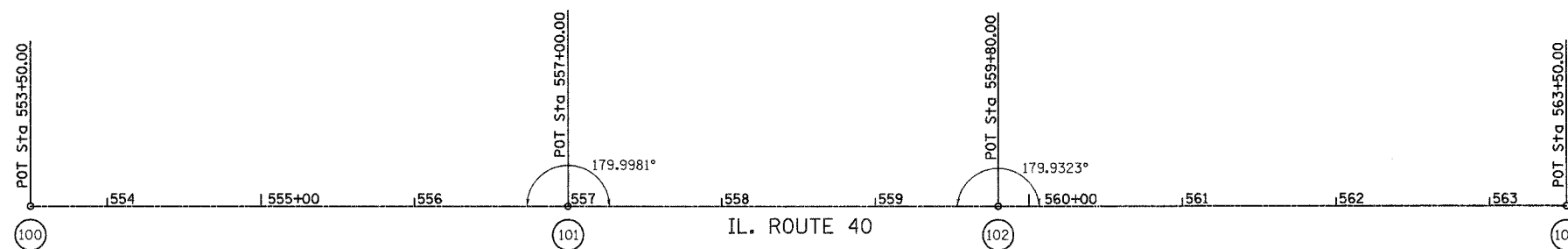
F.A.P. RTE.	SECTION	COUNTY	TOTAL SHEETS	SHEET NO.
646	(102)BR-3	WHITESIDE	57	5
STA.		TO STA.		
FED. ROAD DIST. NO.		ILLINOIS FED. AID PROJECT		
CONTRACT NO. 64426				

## HORIZONTAL & VERTICAL CONTROL

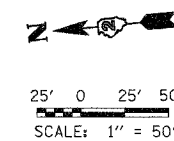


HORIZONTAL CONTROL POINTS					
POINT	NORTHING	EASTING	STATION	OFFSET	DESCRIPTION
100	1807379.70	2424796.05	553+50.00	0.00	MAG NAIL
101	1807031.31	2424762.58	557+00.00	0.00	MAG NAIL
102	1806752.59	2424735.81	559+80.00	0.00	MAG NAIL
103	1806384.24	2424700.88	563+50.00	0.00	MAG NAIL

BENCH MARKS			
ELEVATION	STATION	OFFSET	DESCRIPTION
648.31	559+21.50	25.50' RT	CHISELED SQUARE ON THE SW WINGWALL OF S.N. 098-0017



REFERENCE TIES			
POINT	STATION	OFFSET	DESCRIPTION
500	553+25.94	12.33' RT.	MAG NAIL
501	553+50.00	12.48' LT.	MAG NAIL
502	553+74.47	12.16' RT.	MAG NAIL
503	556+74.54	12.00' RT.	MAG NAIL
504	557+00.00	12.56' LT.	MAG NAIL
505	557+24.66	12.77' RT.	MAG NAIL
506	559+54.78	11.75' RT.	MAG NAIL
507	559+80.00	12.48' LT.	MAG NAIL
508	560.05.06	11.80' RT.	MAG NAIL
509	563+24.48	11.80' RT.	MAG NAIL
510	563+50.00	11.85' LT.	MAG NAIL
511	563+74.53	11.94' RT.	MAG NAIL



REVISIONS	
NAME	DATE

ILLINOIS DEPARTMENT OF TRANSPORTATION

HORIZONTAL & VERTICAL CONTROL

SCALE: 1"=50'  
DATE: AUGUST, 2005

DRAWN BY: JH  
CHECKED BY: FML