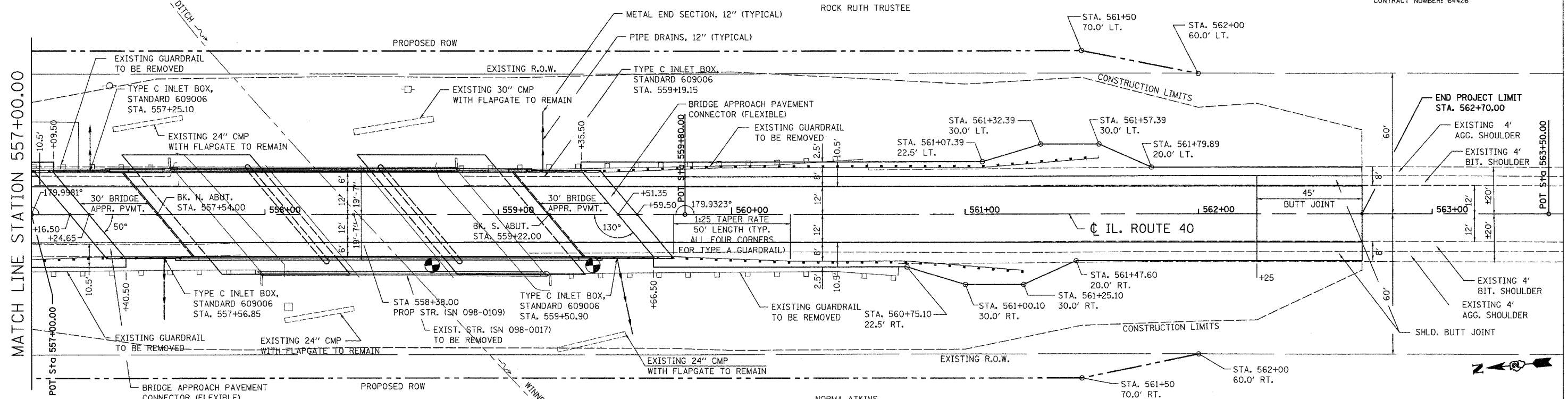


B.M. #1 CHISELED SQUARE ON THE SW WINGWALL
OF S.N. 098-0017, ELEV. 648.31

SEC. 22, T19N, R7E, 4TH P.M.

NOTE: SEE STRUCTURE GENERAL PLAN AND ELEVATION SHEET FOR RIPRAP INFORMATION

F.A.P. RTE.	SECTION	COUNTY	TOTAL SHEETS	SHEET NO.
646	(102)BR-3	WHITESIDE	57	11
STA. 557+00.00 TO STA. 562+70.00				
FED. ROAD DIST. NO. ILLINOIS FED. AID PROJECT				
CONTRACT NUMBER: 64426				



PR. PLATE BEAM GUARD RAIL, TYPE A
STA. 555+68.61 TO 557+31.07 RT
STA. 556+00.90 TO 557+00.86 LT

PR. TRAFFIC BARRIER TERMINAL, TYPE 6
STA. 557+31.07 TO 557+64.22 RT
STA. 557+00.86 TO 557+34.01 LT

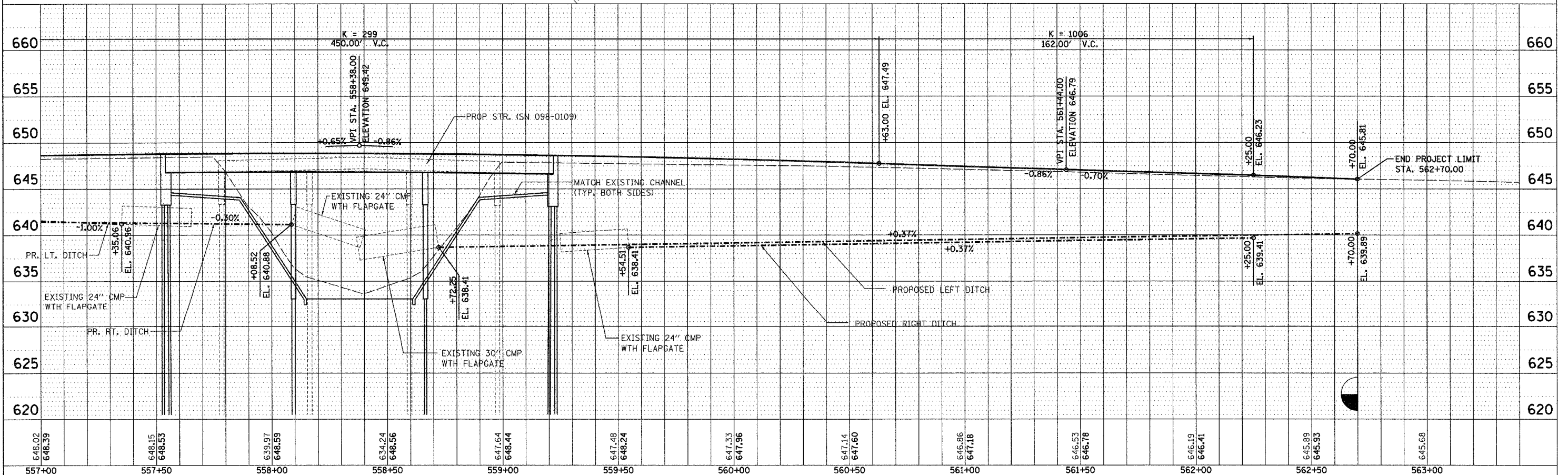
SEC. 21, T19N, R7E, 4TH P.M.

PR. TRAFFIC BARRIER TERMINAL, TYPE 6
STA. 559+41.99 TO 559+75.14 RT
STA. 559+11.78 TO 559+44.93 LT

PR. PLATE BEAM GUARD RAIL, TYPE A
STA. 559+75.14 TO 560+75.10 RT
STA. 559+44.93 TO 561+07.39 LT

PR. TRAFFIC BARRIER TERMINAL
TYPE 1, SPECIAL (FLARED)
STA. 560+75.10 TO 561+25.10 RT
STA. 561+07.39 TO 561+57.39 LT

10' 0" 10' 20"
SCALE: 1" = 20'



PLAN & PROFILE SHEET - STA. 557+00 TO 562+70