

STATE OF ILLINOIS  
DEPARTMENT OF TRANSPORTATION

ROUTE NO.	SECTION	COUNTY	TOTAL SHEETS	SHEET NO.
S.B.L. 646	(102) BR-3	Whiteside	57	20
F.A. 646	BR-3	ILLINOIS FED. AID PROJECT-		

CONTRACT NO. 64426

Joint Size	"C" at 50°F	"D" at 50°F
2"	2"	1 1/2" Min.

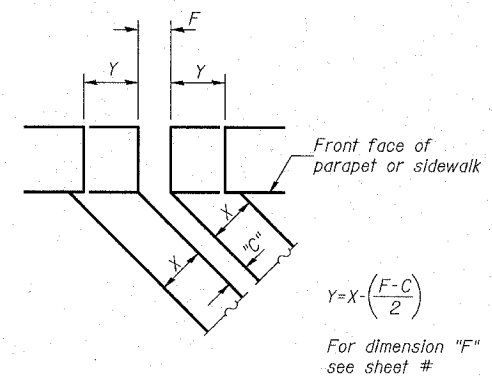
**INSTALLATION NOTES**

- Install continuous seal in roadway, parapet, curb, and sidewalk.
- Install anchor blocks as indicated.

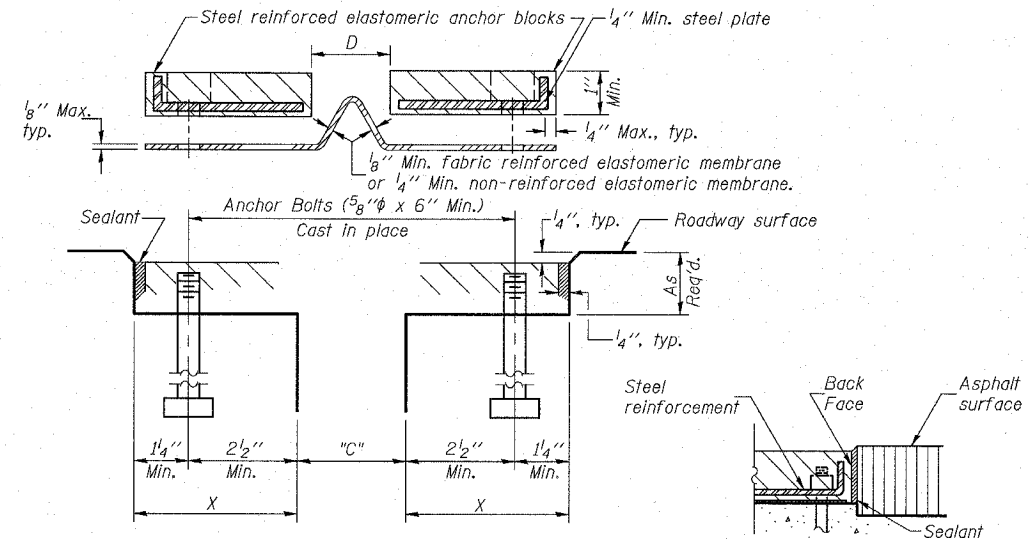
NOTE A: Maximum spacing of anchor bolts shall be 12" centers.

**SKREW LIMITATIONS**

The details of the anchor blocks and the elastomeric membrane in the parapet, as shown, are for up to 50° skews. For skews greater than 50°, the anchor blocks and the elastomeric membrane, installed according to dimension "D", might require modifications to insure a minimum clearance of 1/2" from centerline of anchor studs to edge of parapet opening. The anchor blocks and the elastomeric membrane shall also be installed to the top of the parapet with the anchor studs spaced at ±12" cts.



**FORMING BLOCKOUT SKETCH**



**CROSS SECTION**

**ANCHOR BLOCK WITH ASPHALT SURFACE**

**GENERAL NOTES**

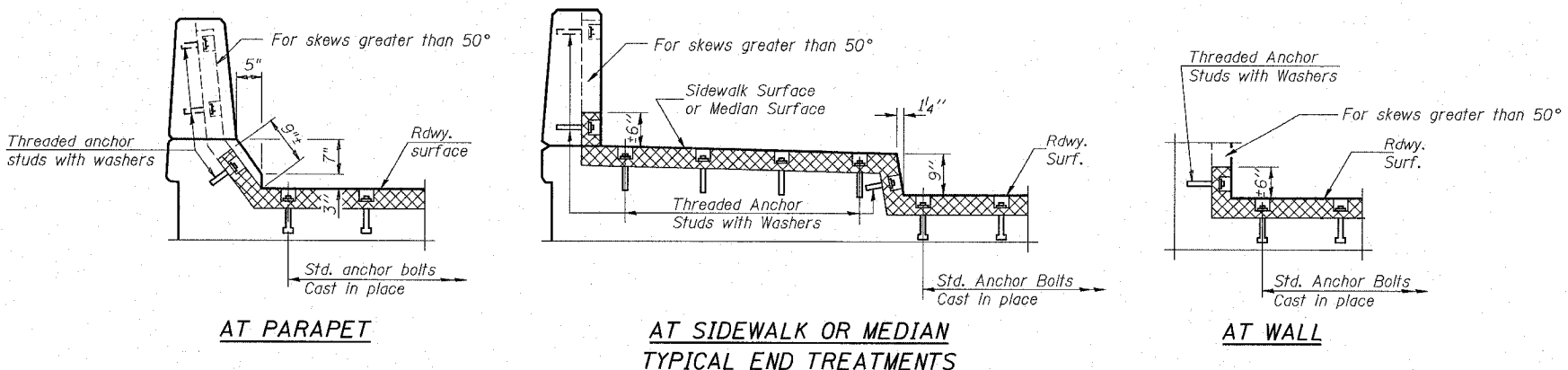
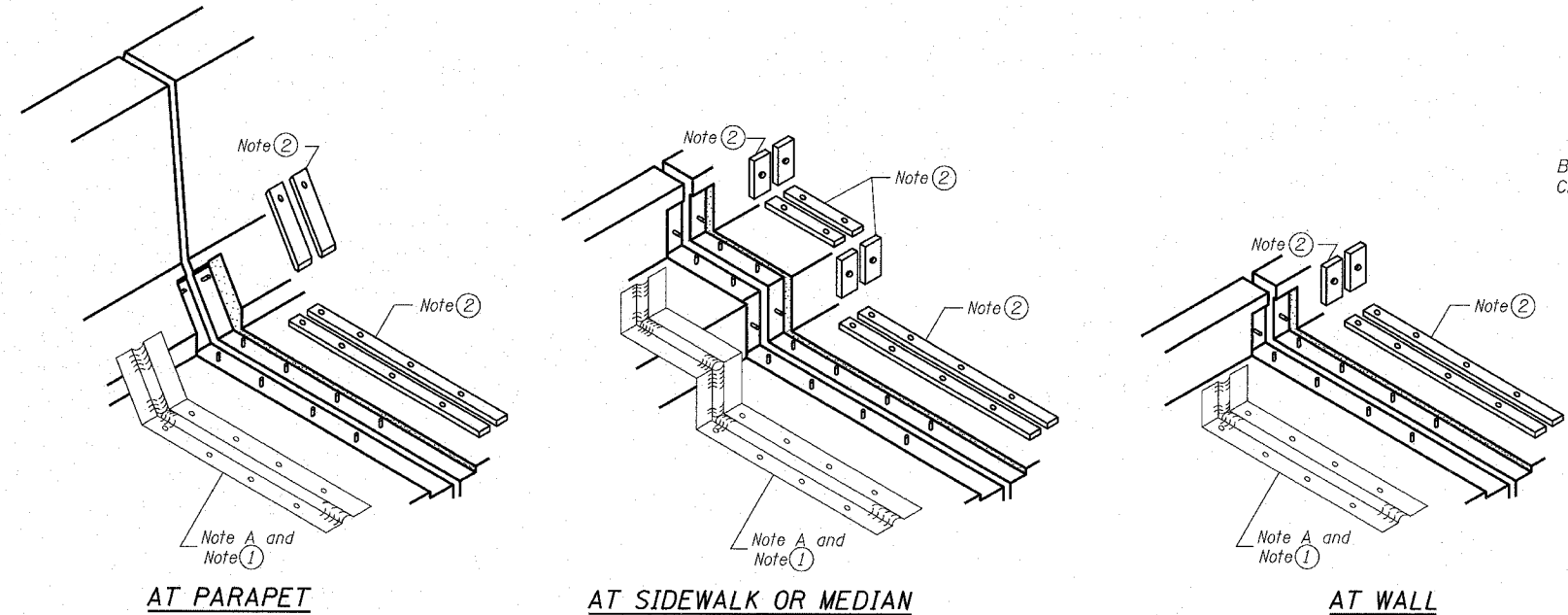
Continuous Seal Neoprene Expansion Joint shall consist of molded anchor blocks of elastomer and steel, field assembled over continuous lengths of elastomeric membrane.

The elastomeric membrane shall be premolded with a single or a double upward convolution that will have a "memory" to return to its molded position upon joint closure.

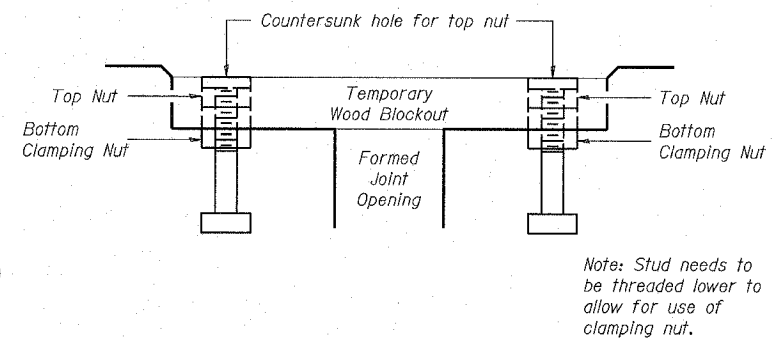
The convolution length shall be such that the extended length will not be greater than the manufactured length when the joint is fully expanded in its design range and will not protrude above the anchor blocks when the joint is fully compressed.

Joint openings shall be adjusted according to Article 503.10(c) of the Standard Specifications when the deck is poured at an ambient temperature other than 50° F.

The parapet and roadway membrane shall be made continuous by an approved vulcanizing process. Lapping will not be permitted.



**TYPICAL END TREATMENTS**



**RECOMMENDED BLOCKOUT DETAIL**

NEOPRENE EXPANSION JOINTS  
IL RTE 40 OVER WINNEBAGO DITCH  
F.A.P. 646 SECTION (102)BR-3  
WHITESIDE COUNTY  
STATION 558+38  
S.N. 098-0109

DESIGNED	DDB	<p>RANDOLPH &amp; ASSOCIATES, INC. 111 N. FORTHER STREET, P.O. BOX 2124 TEL: 815-491-8644 FAX: 815-491-1001 HTTP://WWW.RANDOLPHINC.COM</p>	FILE NUMBER	136.110
CHECKED	AMPH		DATE	Aug. 2005
DRAWN	JDB			
CHECKED	DDB			

R:\Projects\0136\0136-110\Winn.ph\1\br\tdge.plansef\08 neoprene\1.dgn 8/2/2005 10:12:10 AM