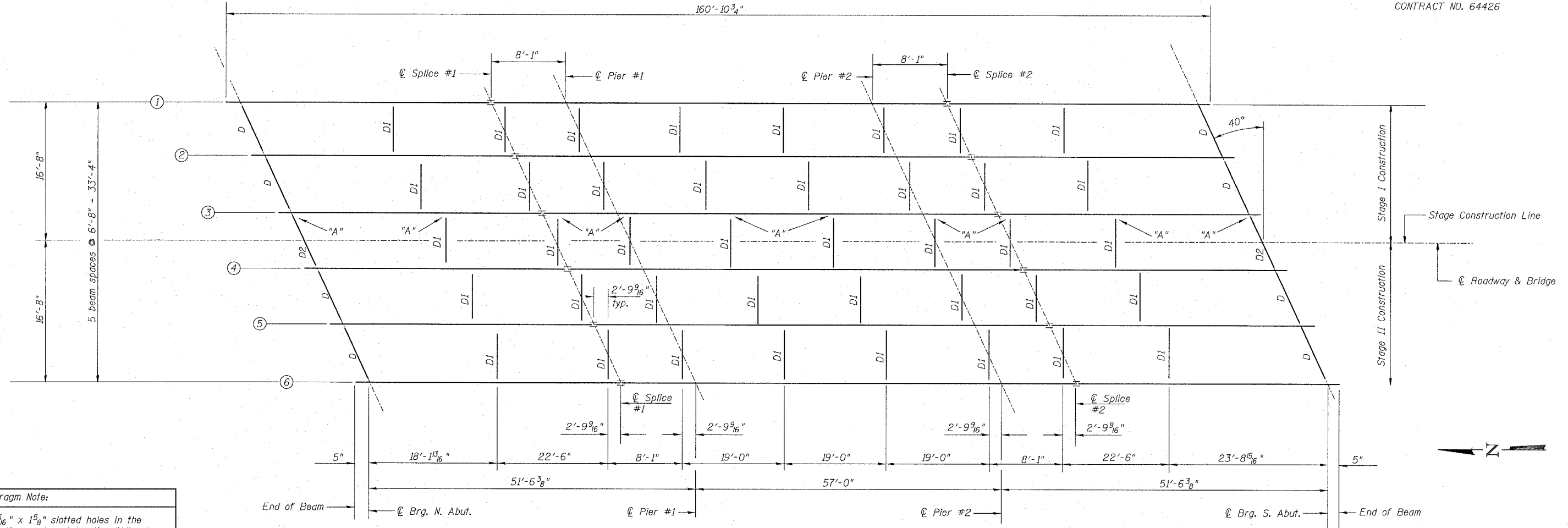


STATE OF ILLINOIS
DEPARTMENT OF TRANSPORTATION

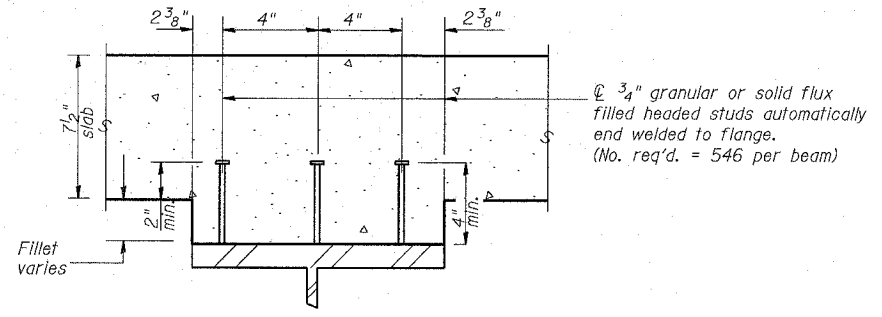
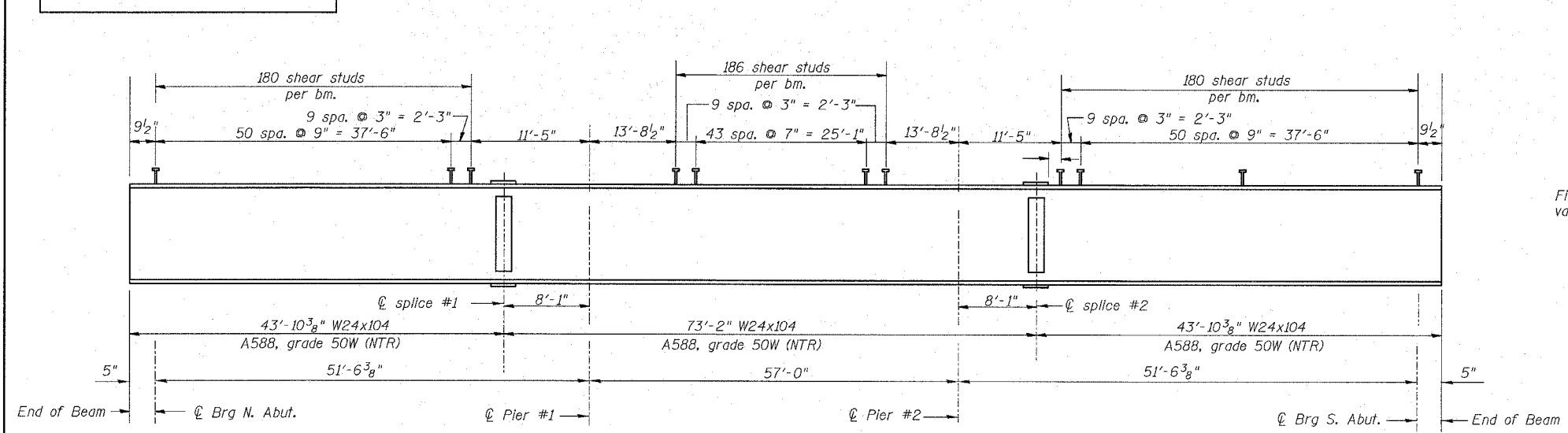
ROUTE NO.	SECTION	COUNTY	TOTAL SHEETS	SHEET NO.
S. B. I.	(102)	Whiteside	57	21
F. A. 646	BR-3			
ILLINOIS FED. AID PROJECT-		CONTRACT NO. 64426		

SHEET NO. 9
24 SHEETS



Diaphragm Note:
Use $1\frac{5}{16}$ " x $1\frac{5}{8}$ " slotted holes in the connection angles at location "A" only. Provide $\frac{1}{4}$ " plate washers for slotted holes. Bolts shall be finger tightened prior to the deck pour for stage II construction and then fully tightened after completion of the deck pour for stage II construction.

FRAMING PLAN



**STRUCTURAL STEEL
FRAMING PLAN
IL RTE 40 OVER WINNEBAGO DITCH
F.A.P. 646 SECTION (102)BR-3
WHITESIDE COUNTY
STATION 558+38
S.N. 098-0109**

Note: NTR denotes Notch Touchness Requirements

BEAM ELEVATION

DESIGNED	DDB		FILE NUMBER
CHECKED	AMPH		136.110
DRAWN	JDB		DATE
ENGINEER	DDB		Aug.
			2005

R:\Projects\0136\0136-110 Winn ph 1\bridge planset\09 SS framing plan.dgn

10/15/28 AM

8/2/2005