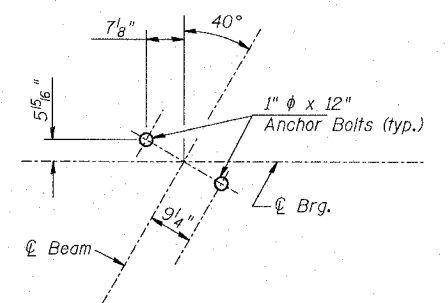


STATE OF ILLINOIS
DEPARTMENT OF TRANSPORTATION

ROUTE NO.	SECTION	COUNTY	TOTAL SHEETS	SHEET NO.
S. B. I.	(102)	Whiteside	57	27
F. A. 646	BR-3			24 SHEETS
FED. ROAD DIST. NO. 7 ILLINOIS FED. AID PROJECT-				

CONTRACT NO. 64426



ANCHOR BOLT LAYOUT DETAIL

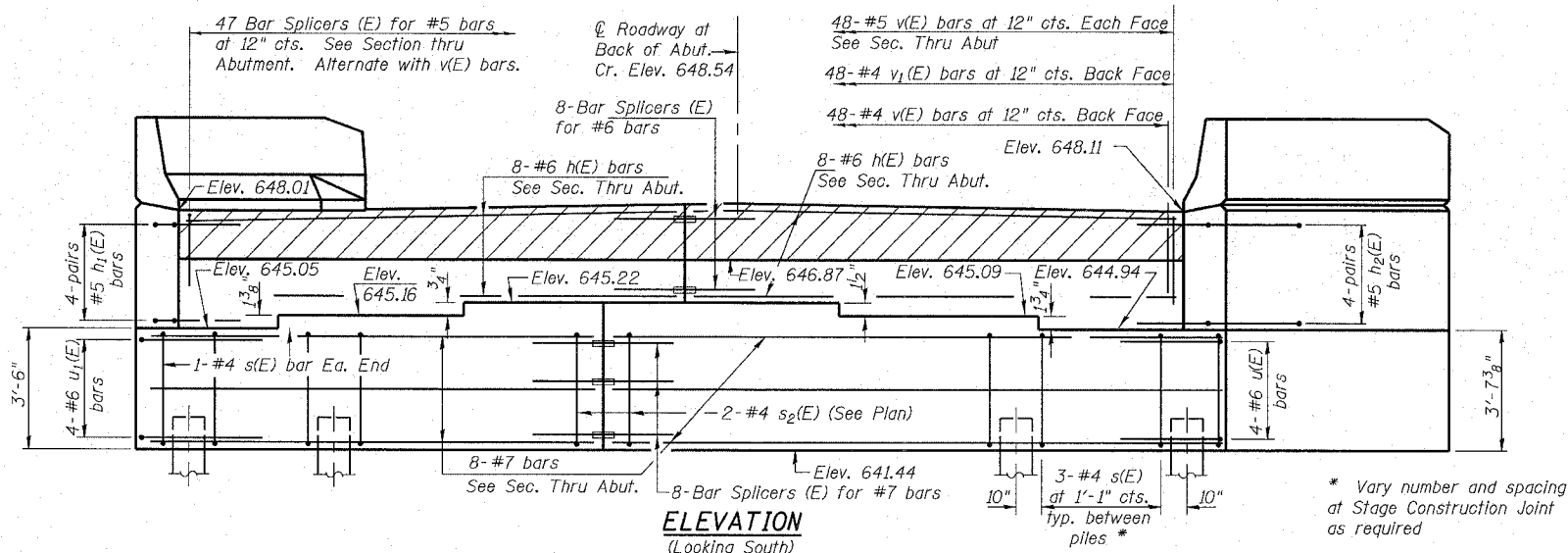
ABUTMENT
BILL OF MATERIAL

Bar	No.	Size	Length	Shape
h(E)	16	#6	23'-2"	
h ₁ (E)	8	#5	5'-9"	
h ₂ (E)	8	#5	5'-9"	
h ₃ (E)	20	#4	9'-8"	
h ₄ (E)	12	#4	9'-8"	
n(E)	16	#6	11'-10"	
n ₁ (E)	12	#6	5'-11"	
p(E)	3	#7	26'-0"	
p ₁ (E)	2	#7	24'-2"	
p ₂ (E)	3	#7	22'-4"	
p ₃ (E)	3	#7	22'-10"	
p ₄ (E)	2	#7	24'-8"	
p ₅ (E)	3	#7	26'-6"	
p ₆ (E)	12	#7	9'-9"	
s(E)	38	#4	15'-7"	
s ₁ (E)	20	#4	9'-5"	
s ₂ (E)	2	#4	18'-3"	
u(E)	4	#6	10'-3"	
u ₁ (E)	4	#6	9'-3"	
v(E)	96	#5	4'-10"	
v ₁ (E)	48	#4	3'-4"	
v ₂ (E)	22	#6	5'-6"	
v ₃ (E)	6	#6	5'-9"	
v ₄ (E)	16	#6	5'-8"	
v ₅ (E)	48	#5	3'-8"	
Structure Excavation		Cu. Yd.	150	
Concrete Structures		Cu. Yd.	45.0	
Reinforcement Bars, Epoxy Coated		Pound	4090	
Furnishing Metal Pile Shells 12"		Lin. Ft.	1125	
Driving and Filling Shells		Lin. Ft.	1125	
Bridge Seat Sealer		Sq. Ft.	128	

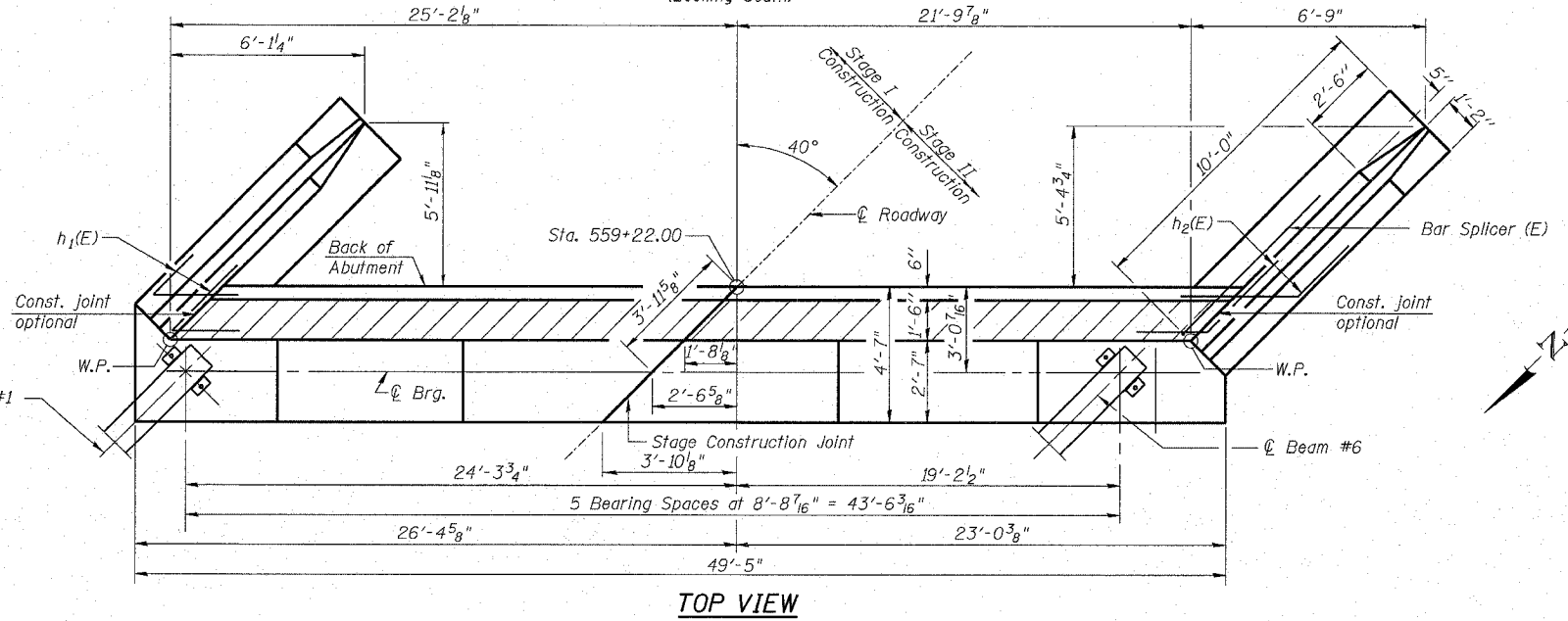
- Notes:
1. Reinforcement bars designated (E) shall be epoxy coated.
2. For details of Bar Splicers, see sheet 20 of 24.

SOUTH ABUTMENT
IL RTE 40 OVER WINNEBAGO DITCH
F.A.P. 646 SECTION (102)BR-3
WHITESIDE COUNTY
STATION 558+38
S.N. 098-0109

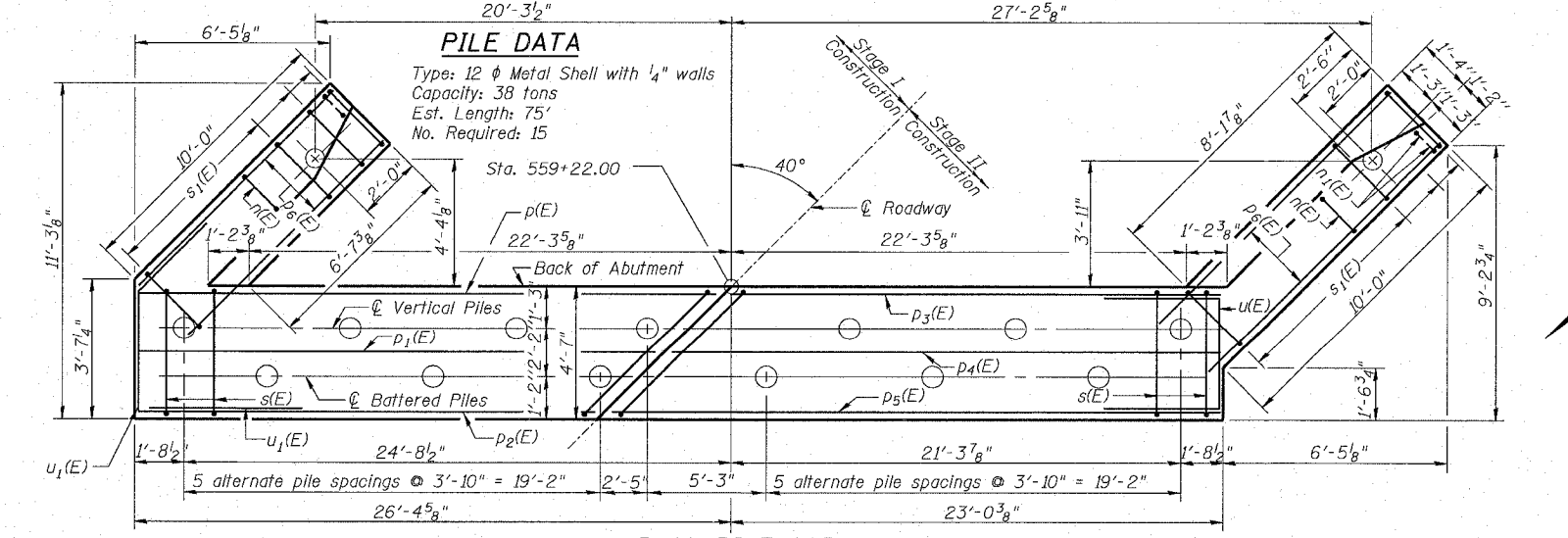
DESIGNED	DDP	RANDOLPH & ASSOCIATES, INC.	FILE NUMBER	136.110
CHECKED	AMPH	111 N. PIERCE AVENUE, PEORIA, IL 61604-2124	DATE	Aug. 2005
DRAWN	JDB	TEL: 309-242-8900 FAX: 309-242-8901		
CHECKED	DDP	CONSULTING ENGINEERS & LAND SURVEYORS		



ELEVATION
(Looking South)

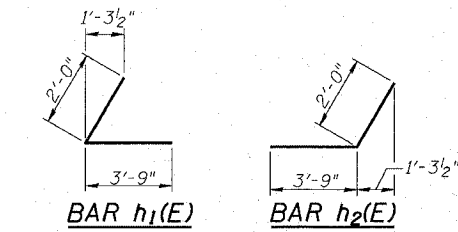


TOP VIEW

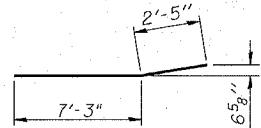


PLAN-PILE CAP

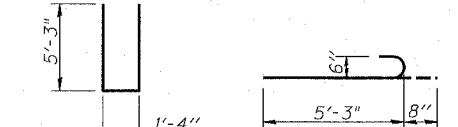
PILE DATA
Type: 12 φ Metal Shell with 1/4" walls
Capacity: 38 tons
Est. Length: 75'
No. Required: 15



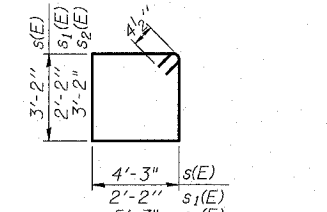
BAR h₁(E) BAR h₂(E)



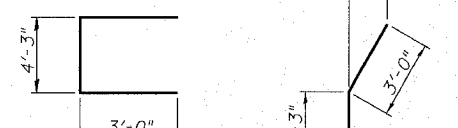
BAR h₄(E)



BAR n(E) BAR n₁(E)



BARS s(E), s₁(E) & s₂(E)



BAR u(E)

BAR u₁(E)



BAR v₁(E) BAR v₃(E) BAR v₄(E)

R:\Projects\0136\0136-110 Winn ph 11\brldge plansex\15-south abutment.dgn

10/22/03 AM

8/8/2005

A-1-R (35°-60°) 9-01-03