

STATE OF ILLINOIS
DEPARTMENT OF TRANSPORTATION

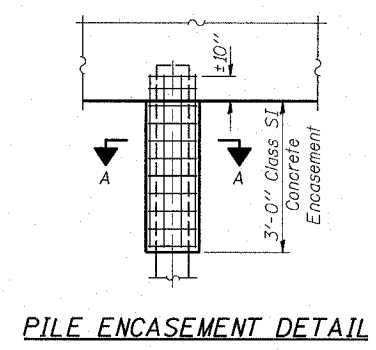
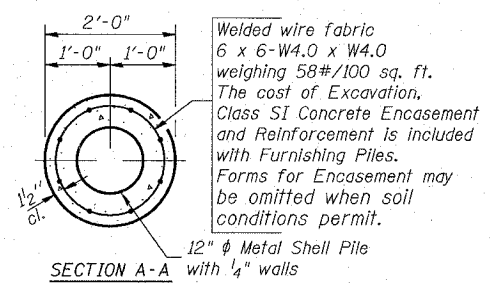
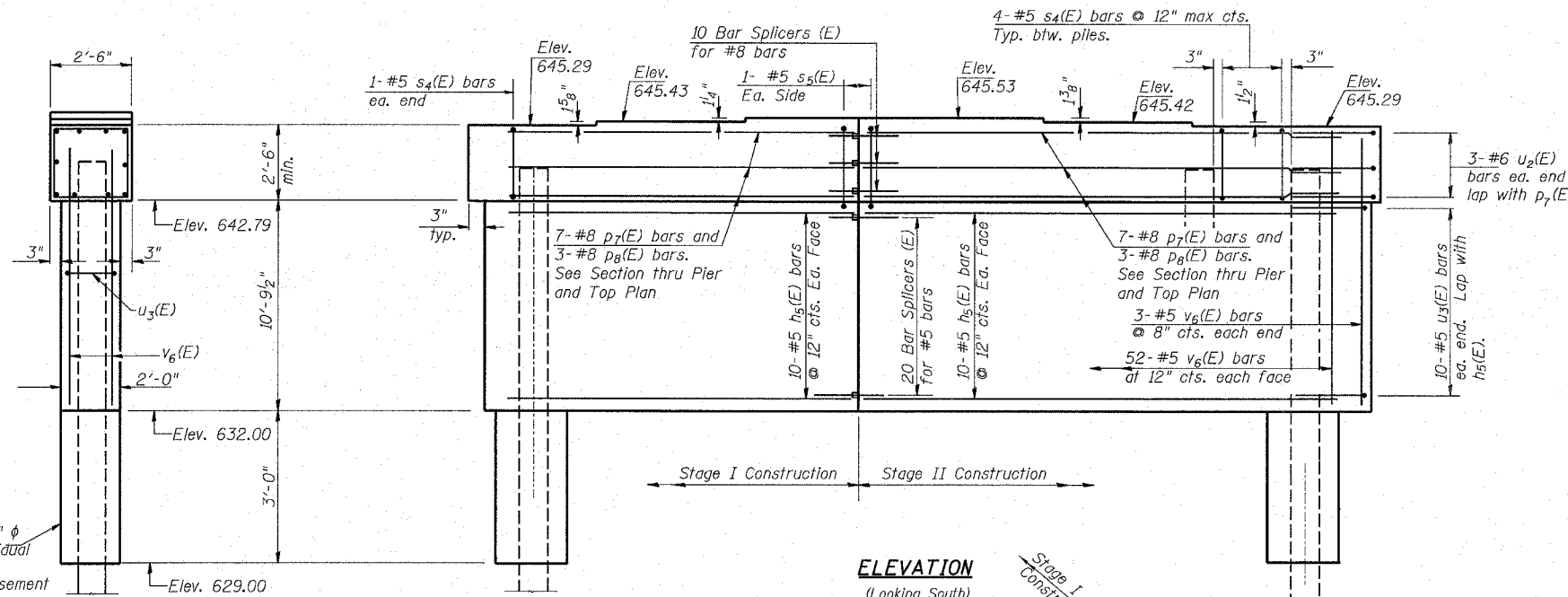
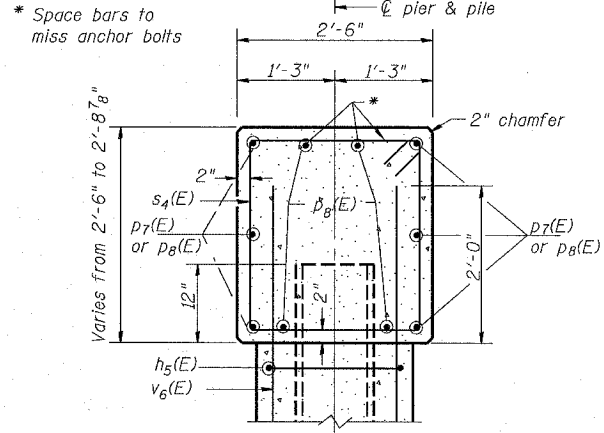
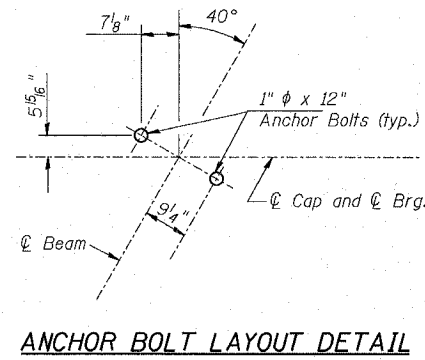
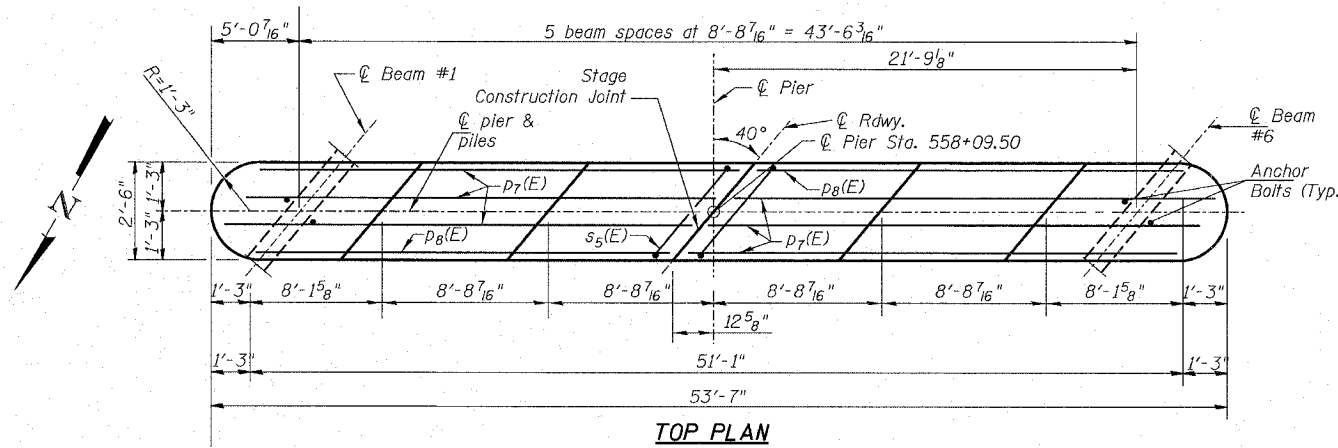
| | | | | |
|--|---------|-----------|--------------|-----------|
| ROUTE NO. | SECTION | COUNTY | TOTAL SHEETS | SHEET NO. |
| S.R.L. | (102) | Whiteside | 57 | 29 |
| F.A. 646 | BR-3 | | | |
| FED. ROAD DIST. NO. 7 ILLINOIS FED. AID PROJECT- | | | | |

CONTRACT NO. 64426

- Notes: 1. Space reinforcement in cap to miss anchor bolts.
2. Pour steps monolithically with cap.
3. All edges shall have standard 2" chamfers except as noted.

PILE DATA

Type: 12" ϕ Metal Shell with $\frac{1}{4}$ " walls
Capacity: 42 ton; over drive to 65 tons
Est. Length: 65 LF
No. Req'd: 11 plus 1 test pile

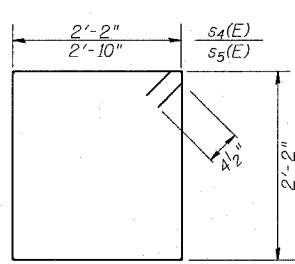


BILL OF MATERIAL

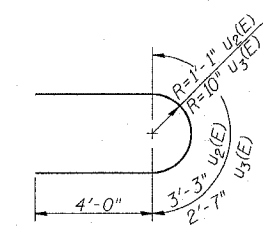
| Bar No. | Size | Length (ft) | Shape |
|--|---------|-------------|-------|
| $h_5(E)$ | #5 | 24'-9" | — |
| $p_7(E)$ | #8 | 26'-0" | — |
| $p_8(E)$ | #8 | 24'-5" | — |
| $s_4(E)$ | #5 | 9'-5" | □ |
| $s_5(E)$ | #5 | 10'-9" | □ |
| $u_2(E)$ | #6 | 11'-3" | U |
| $u_3(E)$ | #5 | 10'-7" | U |
| $v_6(E)$ | #5 | 12'-9" | — |
| Concrete structures | Cu. Yd. | 55.0 | |
| Reinforcement bars, epoxy coated | Lb. | 4650 | |
| Furnishing Metal Pile Shells 12" | L.F. | 715 | |
| Driving and Filling Shells | L.F. | 715 | |
| Structure Excavation | Cu. Yd. | 53 | |
| Underwater Structure Excavation Protection, Location 1 | Each | 1 | |
| Test Piles Metal Shell | Each | 1 | |

Reinforcement bars designated (E) shall be epoxy coated.

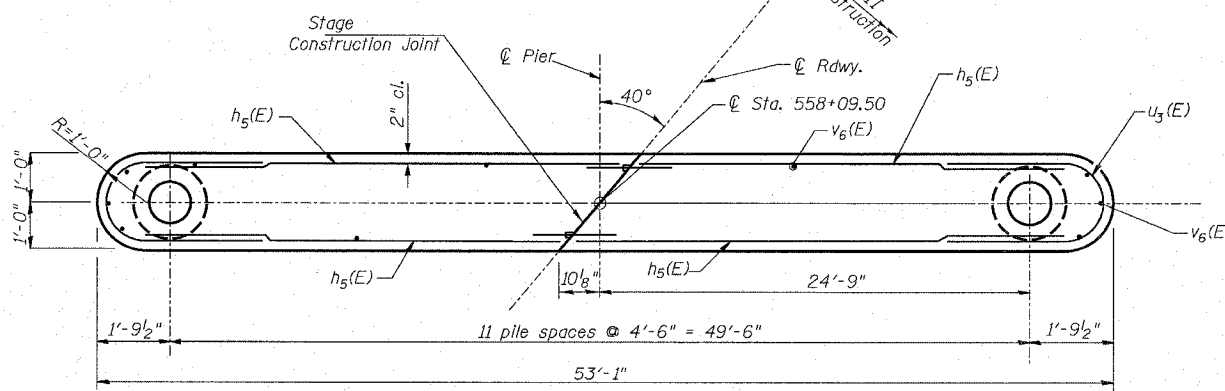
END VIEW



BAR $s_4(E)$ & $s_5(E)$



BAR $u_2(E)$ & $u_3(E)$



STEM SECTION

R:\Projects\0136\0136-110 Winn ph 11\bridge pier\17-pier1.dgn 10/24/05 8/8/2005

PIER #1
IL RTE 40 OVER WINNEBAGO DITCH
F.A.P. 646 SECTION (102)BR-3
WHITESIDE COUNTY
STATION 558+38
S.N. 098-0109

| | | | | |
|----------|------|--|-------------|-----------|
| DESIGNED | DDB | | FILE NUMBER | 136.110 |
| CHECKED | AMPH | | DATE | Aug. 2005 |
| DRAWN | JDB | | | |
| CHECKED | DDB | | | |
| | | | | |