

B.M. 10' N.W. corner Bridge Abutment
 Pt. Sta. 557+87 Elev. 648.77
 Existing Structure: 1-100' span steel thru Truss, 22' width
 on closed Abutments. Truss has been removed.

Abutments to be removed as required.
 No Temporary Bridge required.

STATE OF ILLINOIS
 DEPARTMENT OF PUBLIC WORKS & BUILDINGS
 DIVISION OF HIGHWAYS

ROUTE NO.	SEC.	COUNTY	TOTAL SHEETS	SHEET NO.	SHEET NO. / SHEETS
F.A. 646	(102)BR-3	WHITESIDE	57	37	
CONTRACT #64426					

GENERAL NOTES

Class X Concrete used in curb and wingwalls shall be free of chert, flint, limonite, lignite and soft sandstone. All reinforcement bars shall be lapped 20 diameters unless otherwise shown.

For item precast prestressed concrete Bridge Deck, see supplemental specifications effective Jan. 3, 1966.

Exposed surfaces of the expansion devices, inaccessible after erection, shall receive two shop coats of red lead paint. All other surfaces shall be given one shop coat of red lead paint. Anchor studs shall not be painted.

Layout of slope walls may be varied to suit ground conditions in the field as directed by the Engineer.

The handrail concrete in the rail post and railing shall be poured in separate operations.

The contractor shall drive 2 Met. Shell test piles both in permanent locations. One at pier #1 and one at the So. Abutment as directed by the Engineer before ordering the remainder of piles.

Existing Abutments shall be removed as required to clear the slope walls.

Excavation for Slope Wall shall not be classified. Any excavation at the abutment ends of the structure or shaping of existing ground other than stated in Section 13 of the Standard Specification, shall be incidental to contract.

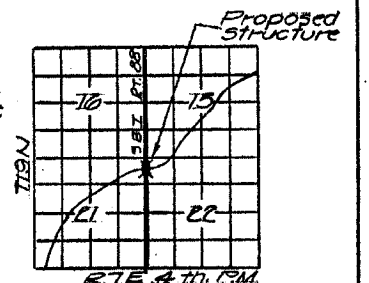
TOTAL BILL OF MATERIAL

Item	Unit	Super	Sub.	Total
Bridge Deck Sealant	Sq. Yds.	575		575
Bituminous Conc. Surface Course Subclass 1-1 (2" Min.)	Tons	64.6		64.6
* Bridge Seat Sealant	L.S.		1	1
Prec. Prest. Conc. Bm Slab (17')	Sq. Ft.	5580		5580
Handrail Concrete	Cu. Yds.	9.0		9.0
Class X Concrete	Cu. Yds.	18.4	73.1	91.5
Reinforcement Bars	Lbs.	8460	5260	13720
Class X Concrete Encasement	Cu. Yds.		19.8	19.8
Metal Piles Shell (12')	Lin. Ft.		1530	1530
Test Piles (Metal Shells)	ea.		2	2
Paint	sq. Yds.			
* Protective Coat	Sq. Yds.	175		175

* Includes application on curb, rail & wingwall only.
 ** At abutments only.

WATERWAY INFORMATION

Drainage Area --- 55 Sq. Miles
 Character --- Level, Cultivated
 Required Opening --- (50 Yr. Flood) --- 400 Sq. Ft.
 Present Opening --- 400 Sq. Ft.
 Proposed Opening --- 400 Sq. Ft.



LOCATION PLAN

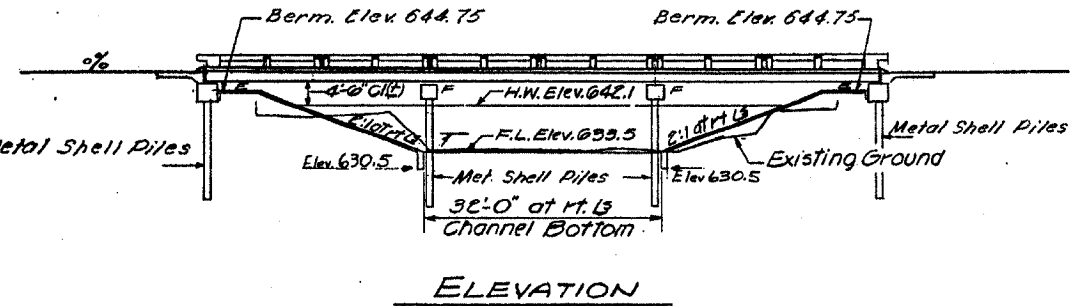
DESIGN STRESSES

FIELD UNITS
 $f_c = 1400$ psi (Super.)
 $f_s = 20,000$ psi (Reinf.)
 $v_c = 75$ psi (FTGs.)
 $n = 10$

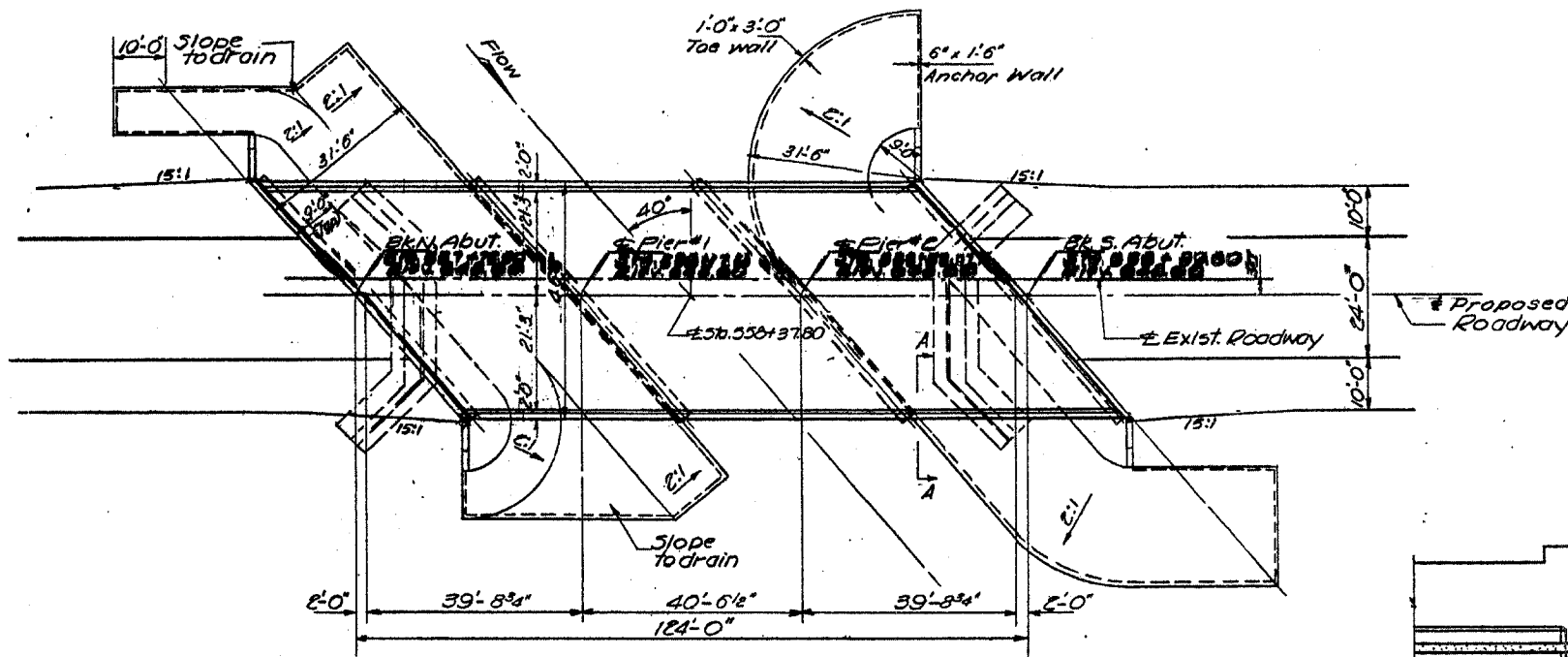
PRECAST PRESTRESSED UNITS

$f_c = 5000$ psi
 $f_{c1} = 4000$ psi
 $f_s = 248,000$ psi (5 strands)
 $f_{s1} = 173,600$ psi (5 strands)

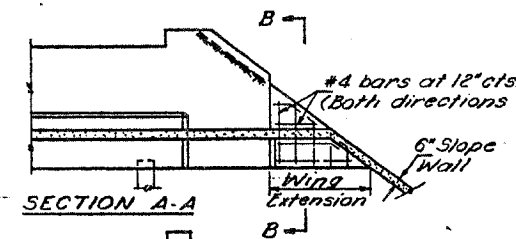
LOADING H520-44



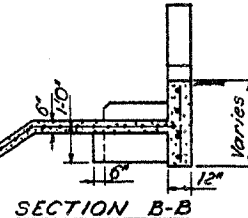
ELEVATION



PLAN



SECTION A-A



SECTION B-B

Welded Wire Fabric 6" x 6" mesh, No. 4 Wires, W.F. 58 # per 100 sq. ft.

STATION 558+37.80
 BUILT 196 BY
 STATE OF ILLINOIS
 S.B.I. RT. 88 SEC. 102B-1
 LOADING H520

NAME PLATE
 (See Std. 2113-1)

DESIGNED *Nick Hwang*
 CHECKED *John Hayes*
 DRAWN *J. Kessler*
 CHECKED *John Hayes*

EXAMINED *Nov 23 1966*
 PASSED *M.C. Bannerman*
 APPROVED *Nick Hwang*