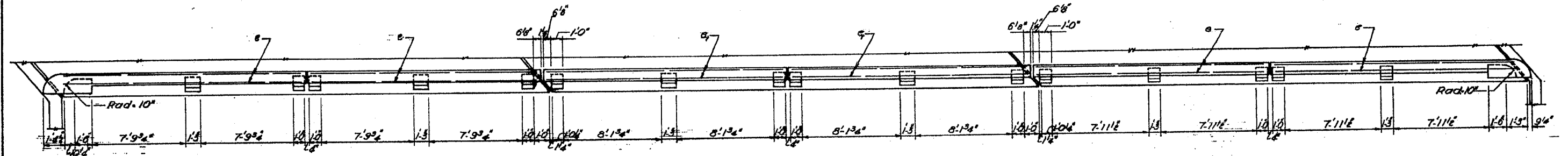


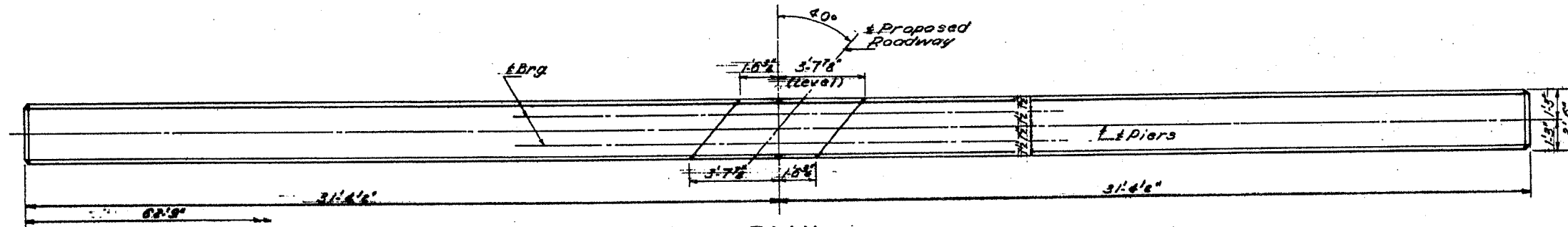
STATE OF ILLINOIS  
DEPARTMENT OF PUBLIC WORKS & BUILDINGS  
DIVISION OF HIGHWAYS

ROUTE NO.	SEC.	COUNTY	TOTAL SHEETS	SHEET NO.	SHEET NO.
F.A. 646	102)BR-3	WHITESIDE	57	40	4
CONTRACT #64426					

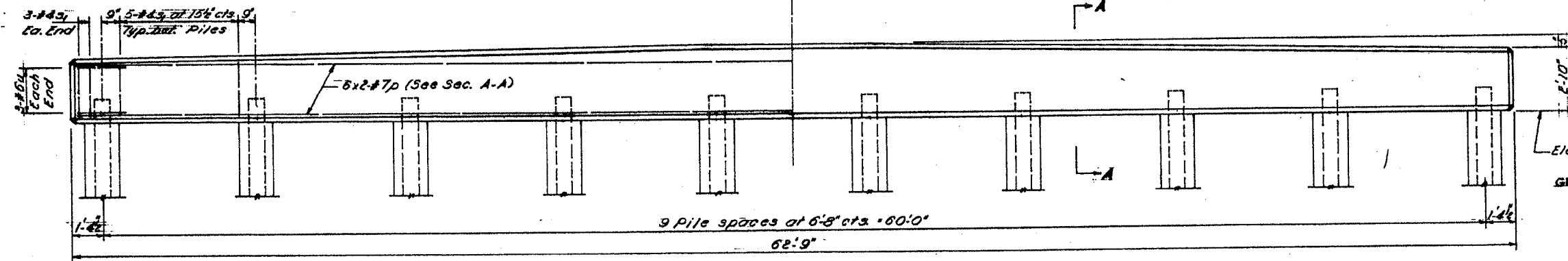


**PLAN**  
(Showing West rail, East rail by rotation)

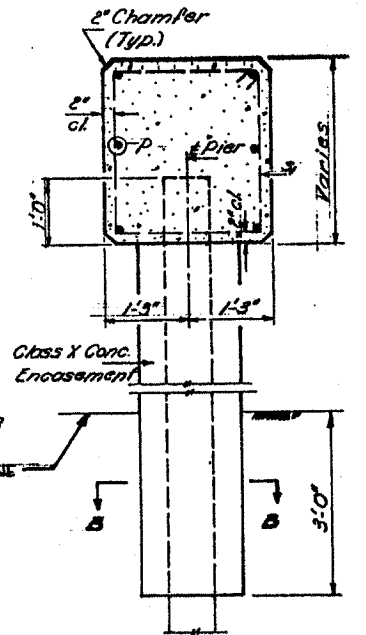
Note: For Rail Detail & its reinforcement see Std. 2070RA-2



**PLAN**  
(Piers)

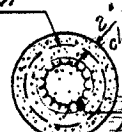


**ELEVATION**

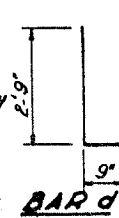


**SECTION A-A**

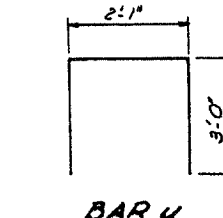
Welded wire fabric 6"x6" Mesh  
#4 Wires - Wt. 58 Lb. per 100 sq  
ft. plus 4 #4 tie bars. Cost to  
be incidental to Class X Conc.  
encasement.



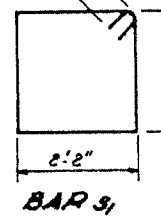
**SECTION B-B**



**BAR d**



**BAR u**



**BAR s**

**BILL OF MATERIAL**

Bar	No.	Size	Length	Shape	Bar	No.	Size	Length	Shape
d	18	#8	3'-6"	□	u	12	#6	8'-1"	□
e	48	#8	19'-3"	—	p	24	#7	32'-6"	—
e <sub>1</sub>	24	#8	20'-0"	—	r	72	#4	3'-0"	□
s	432	#3	3'-5"	□	n	12	#4	4'-0"	□
s <sub>1</sub>	102	#4	10'-1"	□					
Handrail Concrete		Cu. Yds.	9.0	Metal Piles Shell (12")		Lin. Ft.	856		
Class X Concrete		Cu. Yds.	35.3	Test Piles (Metal Shells)		Each	1		
Reinf. Bars (Superstr.)		Lbs.	6200						
Reinf. Bars (Substr.)		Lbs.	2430						
Cl. X Conc. Encasement		Cu. Yds.	17.0						

\* 18 s bars between posts

**PILE DATA**

Type: Metal Shell (12")  
Capacity: 30 Tons  
Est. Lgth: 45'-0"  
No. Req'd: 20 (Including 1 test pile  
at Pier 1)

DESIGNED	W. H. Hwang
CHECKED	John Hays
DRAWN	J. Hessler
CHECKED	John Hays

EXAMINED	Nov 23 1966
PASSED	M. E. Bauman
APPROVED	R. E. Hoff

**PIERS**  
S.B.I. RT 88 SEC. 102B-1  
WHITESIDE COUNTY  
STATION 558+57.80