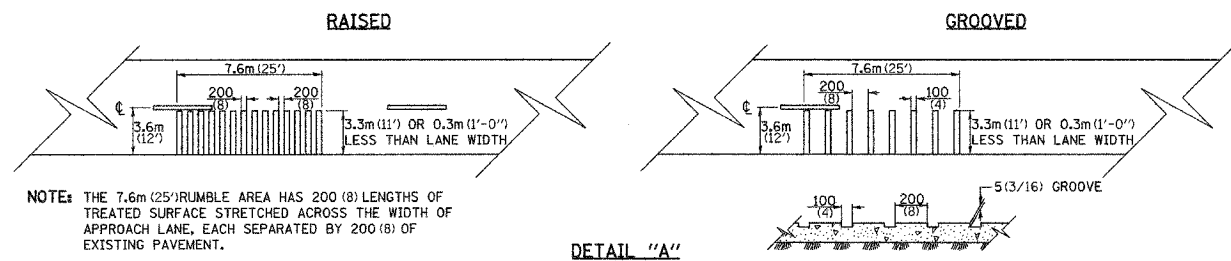
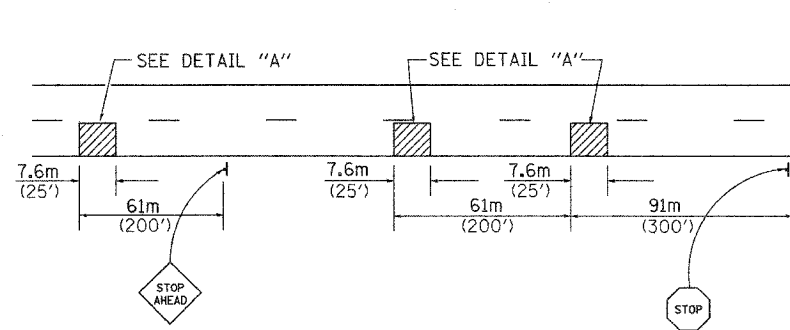


F.A. RTE.	SECTION	COUNTY	TOTAL SHEETS	SHEET NO.
646	(102)BR-3	WHITESIDE	57	51
STA. _____		TO STA. _____		
FED. ROAD DIST. NO. _____ ILLINOIS FED. AID PROJECT				

RUMBLE RESURFACING



NOTE: THE 7.6m (25') RUMBLE AREA HAS 200 (8) LENGTHS OF TREATED SURFACE STRETCHED ACROSS THE WIDTH OF APPROACH LANE, EACH SEPARATED BY 200 (8) OF EXISTING PAVEMENT.

DETAIL "A"

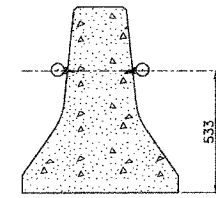
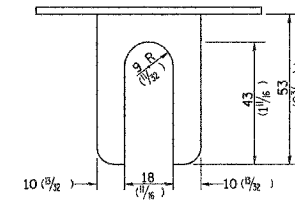
ALL DIMENSIONS ARE IN MILLIMETERS (INCHES) UNLESS OTHERWISE NOTED.

RUMBLE RESURFACING 91.4

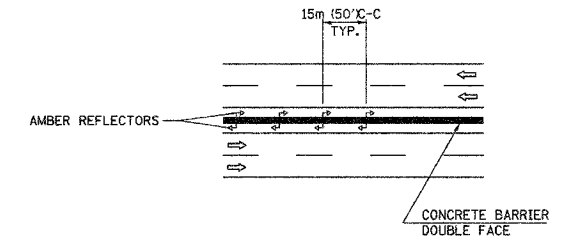
REVISED 2-16-88

BARRIER REFLECTORS

BARRIER REFLECTOR BRACKET

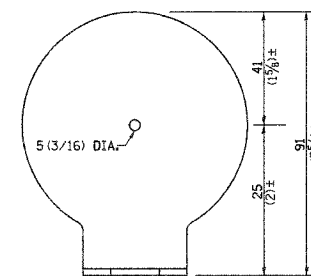


REFLECTOR MOUNTED ON CONCRETE BARRIER

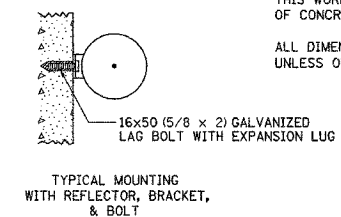


NOTES:

- BRACKET TO BE FABRICATED FROM 12 GAUGE (MIN) STEEL GALVANIZED IN ACCORDANCE WITH ASSHTO M 111.
- INSTALL AMBER REFLECTORS WITH SPACING OF 15m (50') CENTERS.
- BRACKET SHALL BE PLACED BETWEEN THE BOLT HEAD AND THE PLATE WASHER.
- REFLECTORS SHALL CONFORM TO THE REQUIREMENTS OF SECTION 784.07 OF THE STANDARD SPECIFICATIONS.
- THIS WORK SHALL BE CONSIDERED INCIDENTAL TO UNIT COST OF CONCRETE BARRIER.
- ALL DIMENSIONS ARE IN MILLIMETERS (INCHES) UNLESS OTHERWISE NOTED.



CIRCULAR SHAPE 83 (3 1/4) DIA.

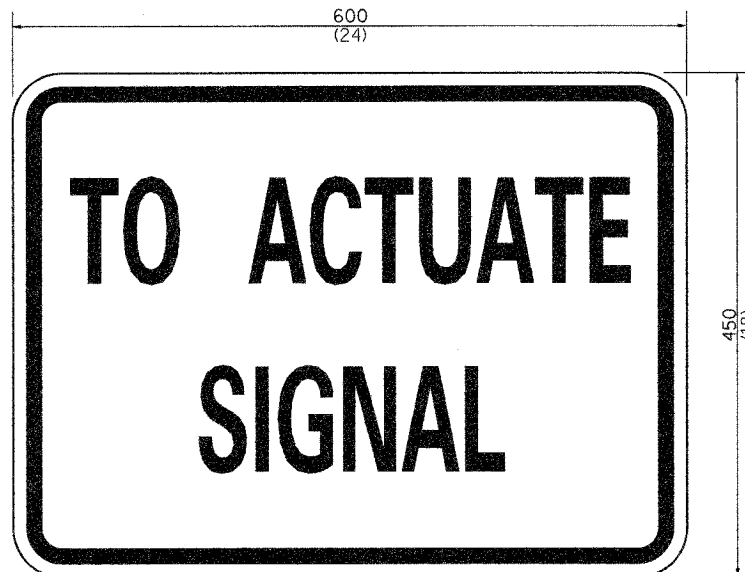


TYPICAL MOUNTING WITH REFLECTOR, BRACKET, & BOLT

BARRIER REFLECTORS 92.4

REVISED 10-15-04

STOP LINE SIGN FOR TEMPORARY SIGNALS



- SIZE: 600(24) x 450(18)
- 100(4) CAPITAL LETTERS - BLACK
- 13 (1/2) BORDER - BLACK
- WHITE REFLECTIVE - TYPE B ENGINEERING GRADE SHEETING

GENERAL NOTE:

- THIS SIGN SHALL BE INSTALLED AT THE STOP LINE AS DIRECTED BY ENGINEER.
- ALL DIMENSIONS ARE IN MILLIMETERS (INCHES) UNLESS OTHERWISE NOTED.

STOP LINE SIGN FOR TEMPORARY SIGNALS 99.4

REVISED 8-7-90