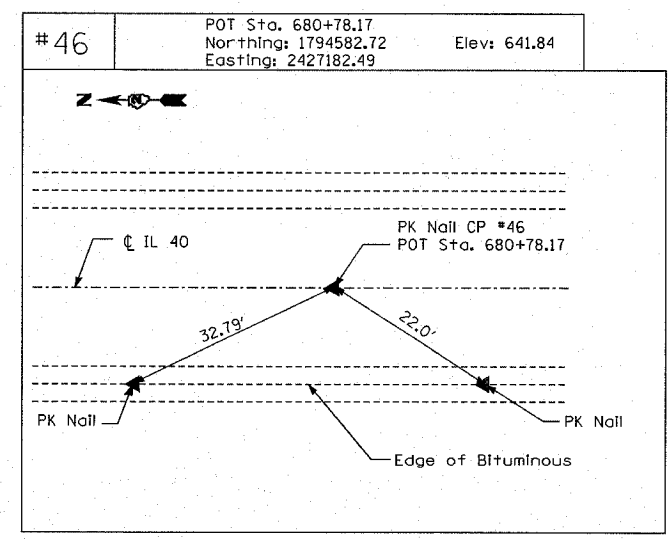
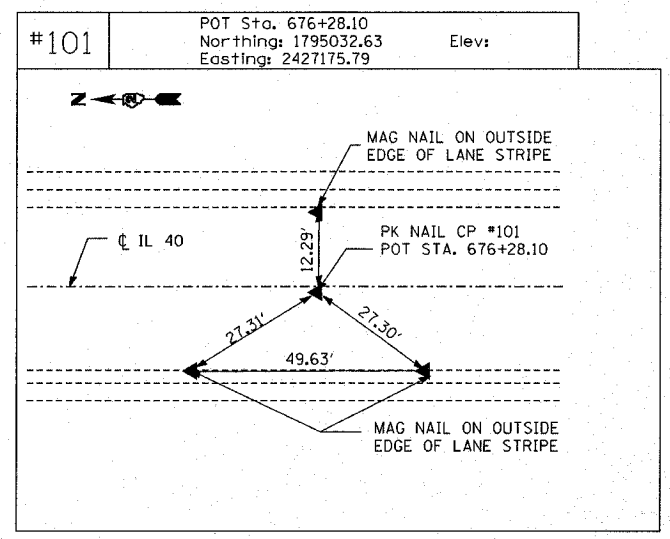


HORIZONTAL CONTROL POINTS							
POINT	NORTH	EAST	ELEVATION	CHAIN	STATION	OFFSET	DESCRIPTION
45	1795782.92	2427165.39		CL	668+77.85	0' (P.O.T.)	PK NAIL
46	1794582.72	2427182.49		CL	680+78.17	0' (P.O.T.)	PK NAIL
100	1795332.75	2427171.54		CL	673+28.05	0' (P.O.T.)	PK NAIL
101	1795032.63	2427175.79		CL	676+28.10	0' (P.O.T.)	PK NAIL

BENCHMARKS							
POINT	NORTH	EAST	ELEVATION	CHAIN	STATION	OFFSET	DESCRIPTION
A	---	---	644.77	CL	674+78	---	CHISLED " □ " ON TOP OF WINGWALL S.W. CORNER OF BRIDGE #098-0018



HORIZONTAL & VERTICAL CONTROL

 IL 40 OVER GREEN RIVER
 F.A.P. RTE 646 (IL RTE 40) SECTION 102 BR-2
 WHITESIDE COUNTY