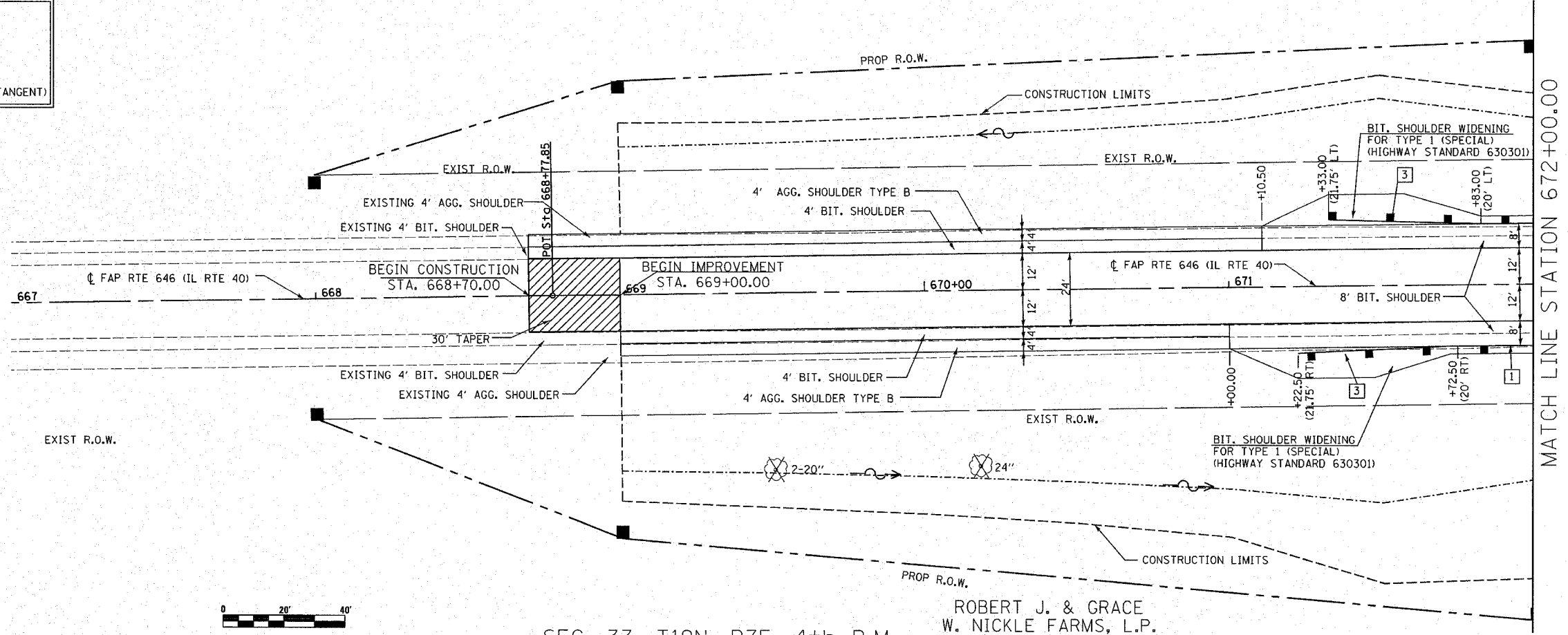


SEC. 34, T19N, R7E, 4th P.M.

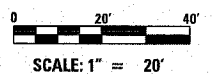
BRUCE E. HEADING
& DIANE J. HEADING

- LEGEND**
- 1 SPBGR TYPE A
 - 2 TRAFFIC BARRIER TERMINAL TYPE 6
 - 3 TRAFFIC BARRIER TERMINAL TYPE 1 SPECIAL (TANGENT)



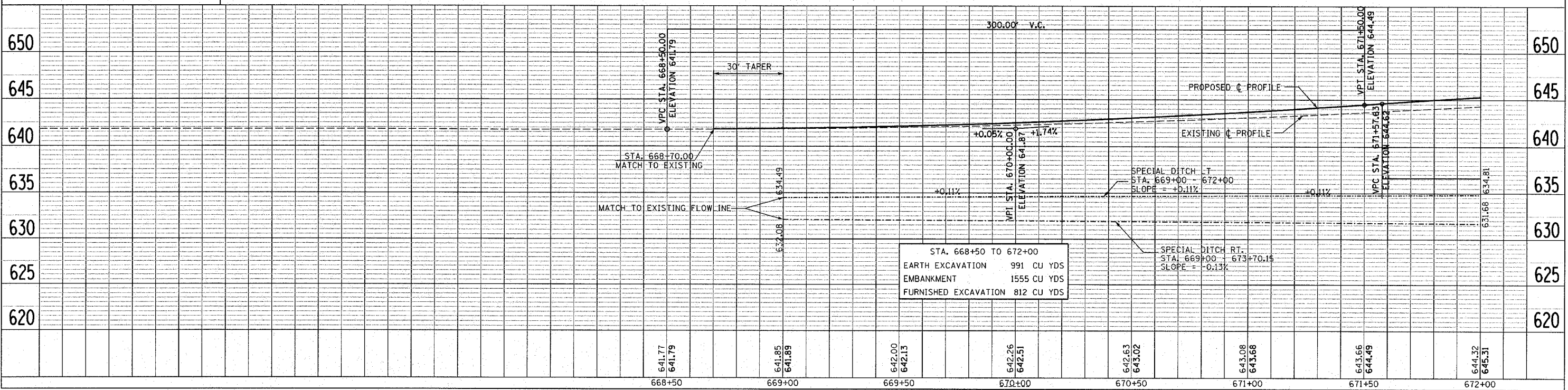
MATCH LINE STATION 672+00.00

PLAN & PROFILE SHEET
SHOWING EXISTING,
REMOVAL, & PROPOSED
IL 40 OVER GREEN RIVER
F.A.P. RTE 646 (IL RTE 40) SECTION 102 BR-2
WHITESIDE COUNTY



SEC. 33, T19N, R7E, 4th P.M.

ROBERT J. & GRACE
W. NICKLE FARMS, L.P.



PLAN	DATE
BY	
NO.	
DATE	
BY	
NO.	
DATE	
BY	
NO.	
DATE	
BY	
NO.	
DATE	
BY	
NO.	
DATE	

PROFILE	DATE
BY	
NO.	
DATE	
BY	
NO.	
DATE	
BY	
NO.	
DATE	
BY	
NO.	
DATE	
BY	
NO.	
DATE	