

08/10/2005 12:54:05 PM R:\Projects\0136\0136-111 green.plt I:\work\0136\0136-111.dgn

DATE	
BY	
REVISIONS	
NO.	
DESCRIPTION	
DATE	
BY	
NO.	
DESCRIPTION	
DATE	
BY	
NO.	
DESCRIPTION	

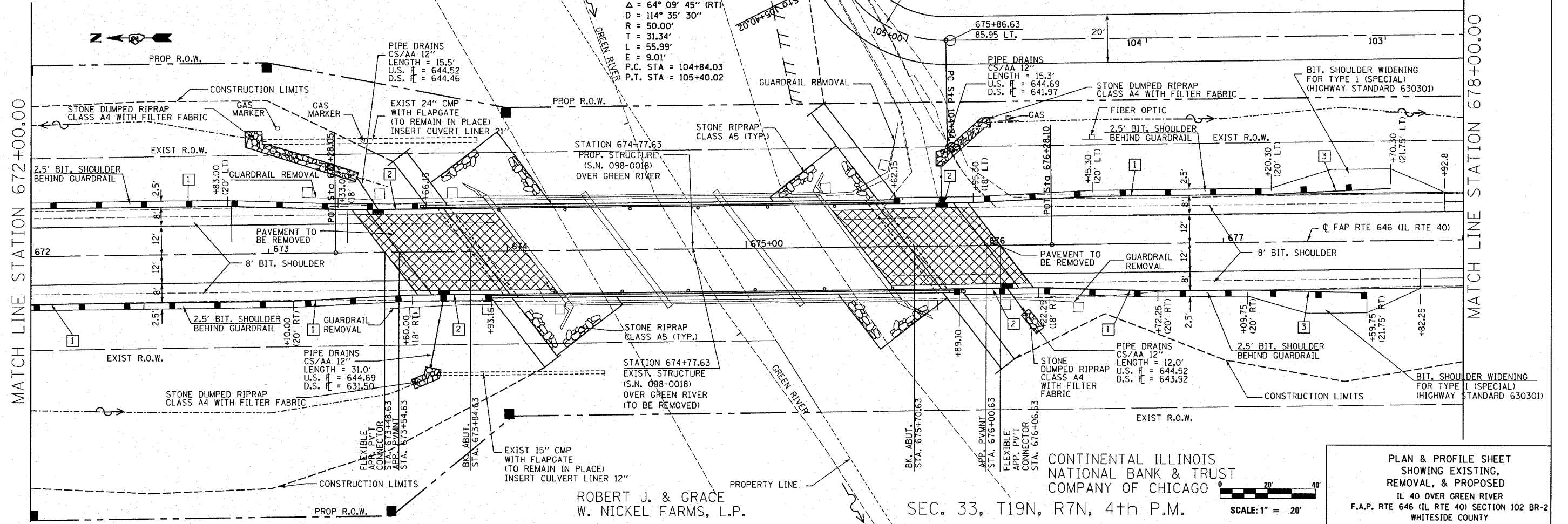
DATE	
BY	
REVISIONS	
NO.	
DESCRIPTION	
DATE	
BY	
NO.	
DESCRIPTION	
DATE	
BY	
NO.	
DESCRIPTION	

LEGEND

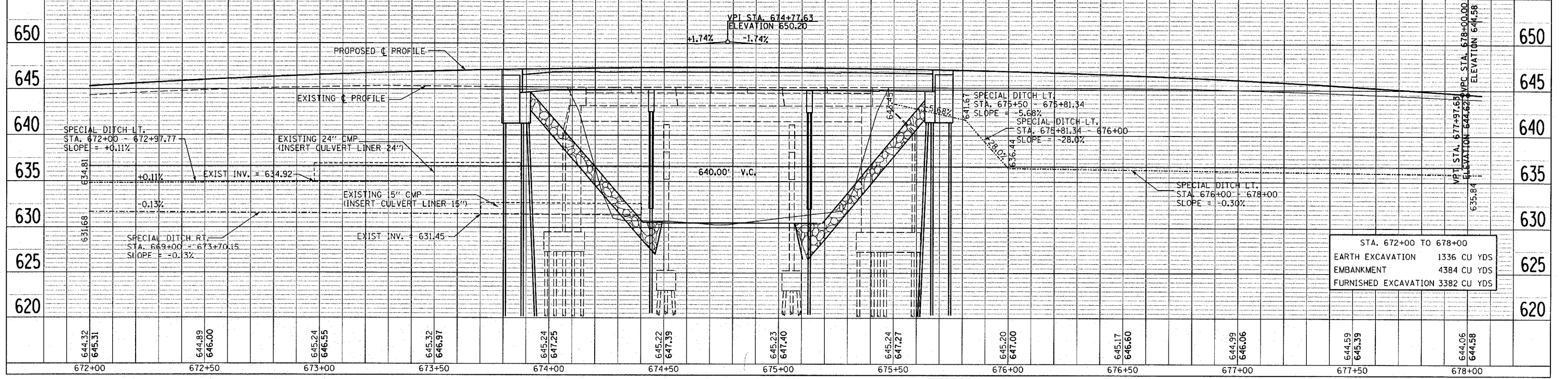
- 1 SPBGR TYPE A
- 2 TRAFFIC BARRIER TERMINAL TYPE 6
- 3 TRAFFIC BARRIER TERMINAL TYPE 1 SPECIAL (TANGENT)

BRUCE E. HEADING & DIANE J. HEADING
 SEC. 34, T19N, R7N, 4th P.M.

DESIGNED AMPH/GJM	CHECKED GJM	DRAWN AMPH	CHECKED GJM	FILE NUMBER 136.111	F.A. RTE. 646	SECTION 102 BR-2	COUNTY WHITESIDE	TOTAL SHEETS 69	SHEET NO. 15
				DATE AUG 2005	STA. 672+00.00 TO STA. 678+00.00		FED. ROAD DIST. NO. 2 ILLINOIS		FED. AID PROJECT



PLAN & PROFILE SHEET
 SHOWING EXISTING,
 REMOVAL, & PROPOSED
 IL 40 OVER GREEN RIVER
 F.A.P. RTE 646 (IL RTE 40) SECTION 102 BR-2
 WHITESIDE COUNTY



STA. 672+00 TO 678+00	EARTH EXCAVATION	1336 CU YDS
	EMBANKMENT	4384 CU YDS
	FURNISHED EXCAVATION	3382 CU YDS