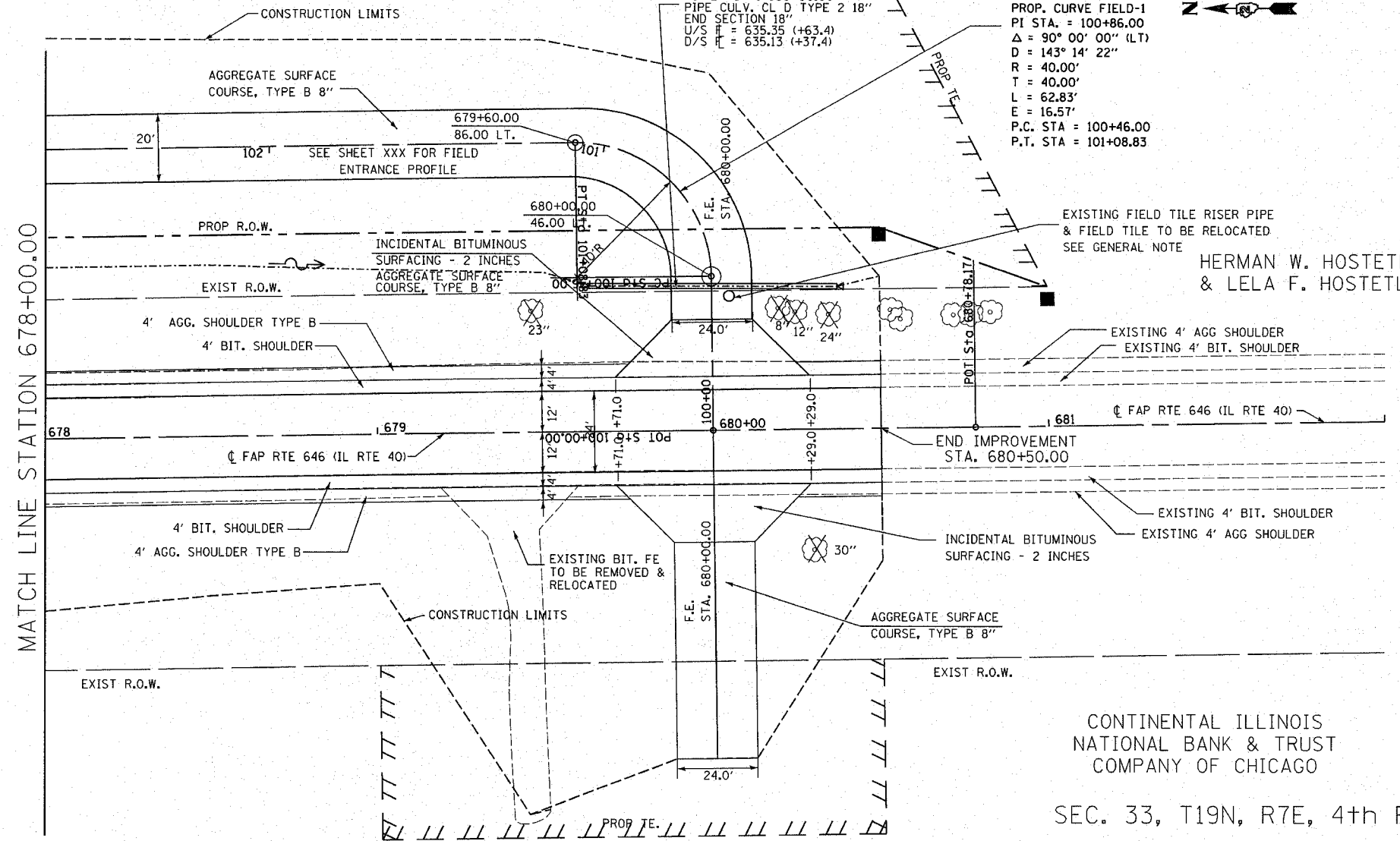


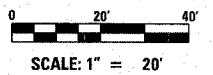
SEC. 34, T19N, R7E, 4th P.M.

DESIGNED AMPH/GJM	CHECKED GJM	DATE AUG 2005	FILE NUMBER 136.111	F.A. RTE. 646	SECTION 102 BR-2	COUNTY WHITESIDE	TOTAL SHEETS 69	SHEET NO. 16
STA. 678+00.00 TO STA. 682+00.00			ILLINOIS		FED. AID PROJECT		CONTRACT NO. 64427	

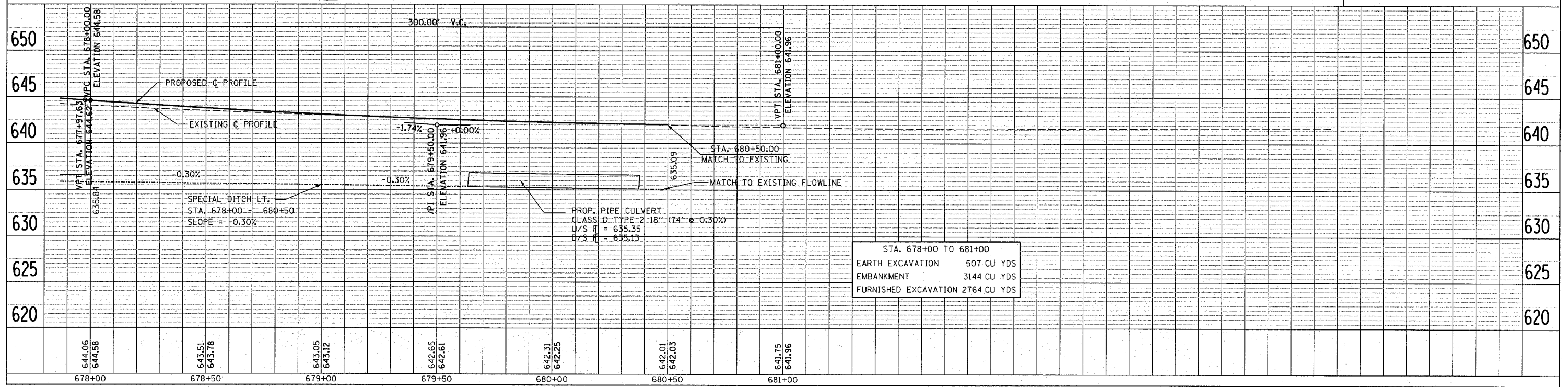
LEGEND	
1	SPBGR TYPE A
2	TRAFFIC BARRIER TERMINAL TYPE 6
3	TRAFFIC BARRIER TERMINAL TYPE 1 SPECIAL (TANGENT)



SEC. 33, T19N, R7E, 4th P.M.



PLAN & PROFILE SHEET
SHOWING EXISTING,
REMOVAL, & PROPOSED
IL 40 OVER GREEN RIVER
F.A.P. RTE 646 (IL RTE 40) SECTION 102 BR-2
WHITESIDE COUNTY



STA. 678+00 TO 681+00	
EARTH EXCAVATION	507 CU YDS
EMBANKMENT	3144 CU YDS
FURNISHED EXCAVATION	2764 CU YDS

DATE	BY

DATE	BY