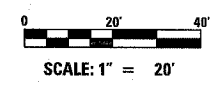
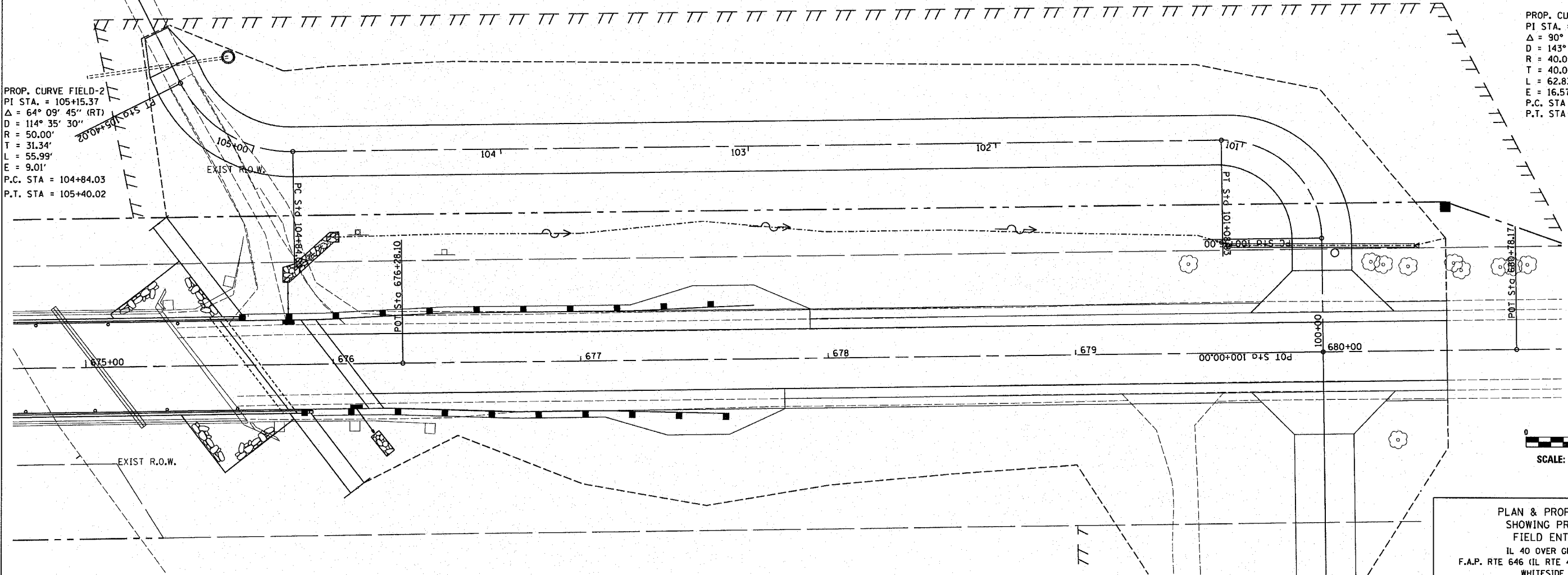


DESIGNED AMPH/GJM		FILE NUMBER 136.111	F.A. RTE. 646	SECTION 102 BR-2	COUNTY WHITESIDE	TOTAL SHEETS 69	SHEET NO. 17
CHECKED GJM		DATE AUG 2005	STA. 678+00.00 TO STA. 682+00.00		FED. ROAD DIST. NO. 2 ILLINOIS FED. AID PROJECT		
DRAWN AMPH		CONTRACT NO. 64427					
CHECKED GJM		PROP. CURVE FIELD-1 PI STA. = 100+86.00 $\Delta = 90^\circ 00' 00''$ (LT) $D = 143^\circ 14' 22''$ $R = 40.00'$ $T = 40.00'$ $L = 62.83'$ $E = 16.57'$ P.C. STA = 100+46.00 P.T. STA = 101+08.83					

PROP. CURVE FIELD-2
PI STA. = 105+15.37
 $\Delta = 64^\circ 09' 45''$ (RT)
 $D = 114^\circ 35' 30''$
 $R = 50.00'$
 $T = 31.34'$
 $L = 55.99'$
 $E = 9.01'$
P.C. STA = 104+84.03
P.T. STA = 105+40.02

PLAN	DATE
BY	
NO.	
CHECKED	
DATE	

PROFILE	DATE
BY	
NO.	
CHECKED	
DATE	



PLAN & PROFILE SHEET
SHOWING PROPOSED
FIELD ENTRANCE
IL 40 OVER GREEN RIVER
F.A.P. RTE 646 (IL RTE 40) SECTION 102 BR-2
WHITESIDE COUNTY

