

STATE OF ILLINOIS  
DEPARTMENT OF TRANSPORTATION

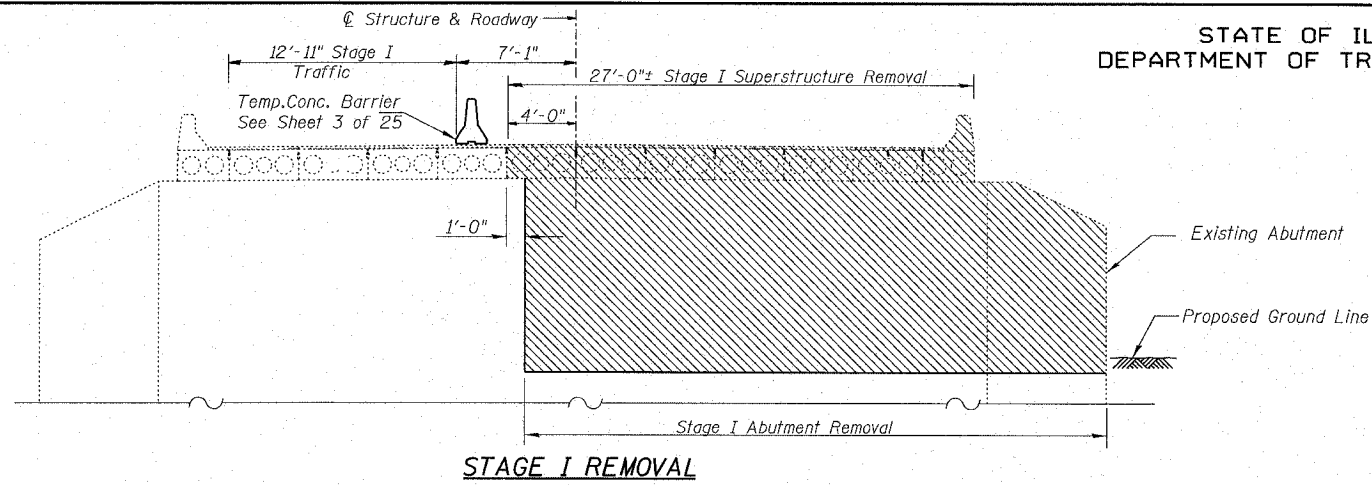
ROUTE NO. SECTION	COUNTY	TOTAL SHEETS	SHEET NO.
S. B. I. (102)	Whiteside	69	22
F.A. 646 BR-2			
FED. ROAD DIST. NO. 7	ILLINOIS	FED. AID PROJECT-	

CONTRACT NO. 64427

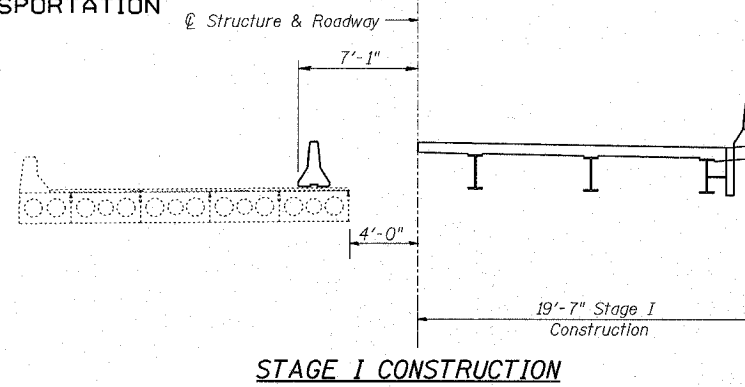
SHEET NO. 2  
25 SHEETS

INDEX OF DRAWINGS

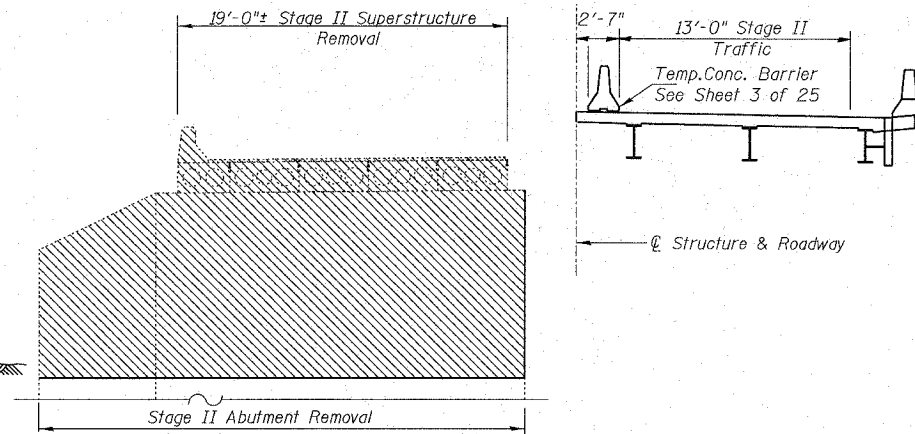
Sht. No.	Sht. Title
1	General Plan and Elevation
2	Stage Construction and Temp Sheet Piling
3	Temporary Concrete Barrier
4 & 5	Deck Elevations
6	Deck Plan & Section
7	Superstructure Details
8	2" Neoprene Joint
9	Structural Steel Framing Plan
10	Diaphragm & Splice Details
11	Abutment Bearings
12	Pier Bearings
13	Anchor Bolt Details
14	North Abutment
15	North Abutment Details
16	South Abutment
17	South Abutment Details
18	Pier 1
19	Pier 2
20	Concrete Pile Details
21	Bar Splicer Details
22	Cantilever Forming Brackets
23, 24 & 25	Soil Boring Logs



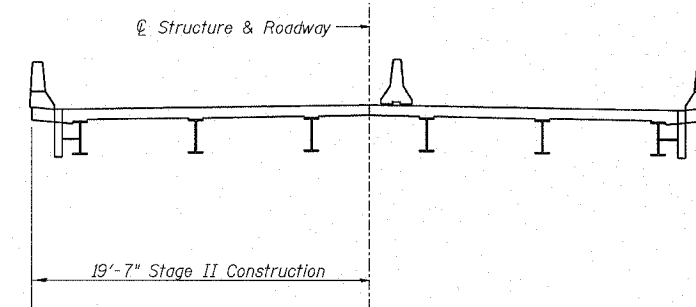
STAGE I REMOVAL



STAGE I CONSTRUCTION



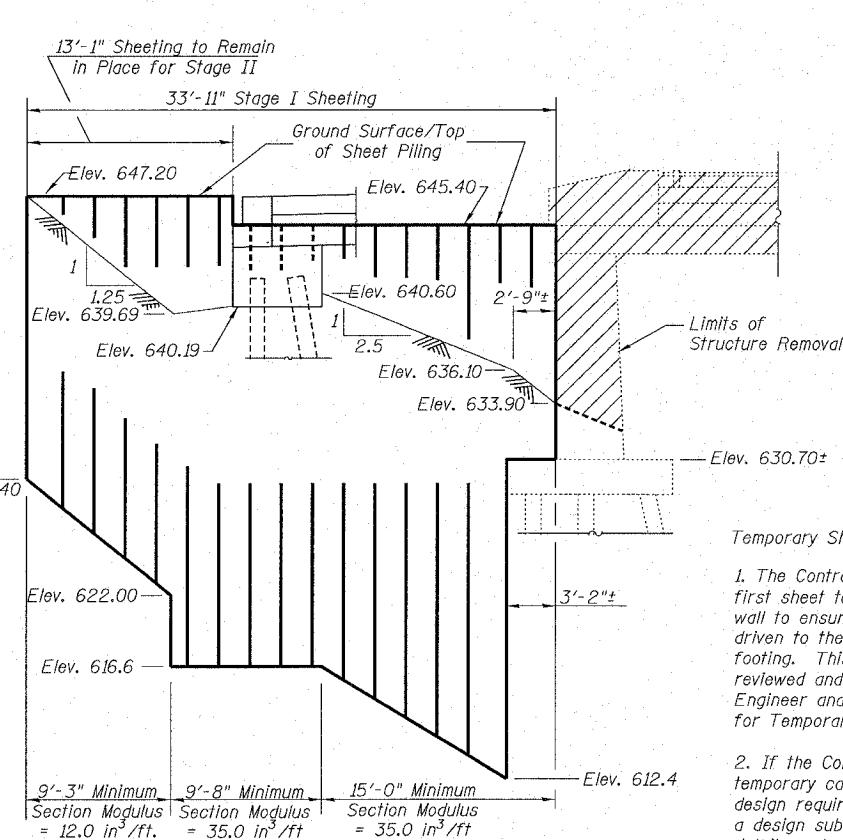
STAGE II REMOVAL



STAGE II CONSTRUCTION

Stage Construction Notes:

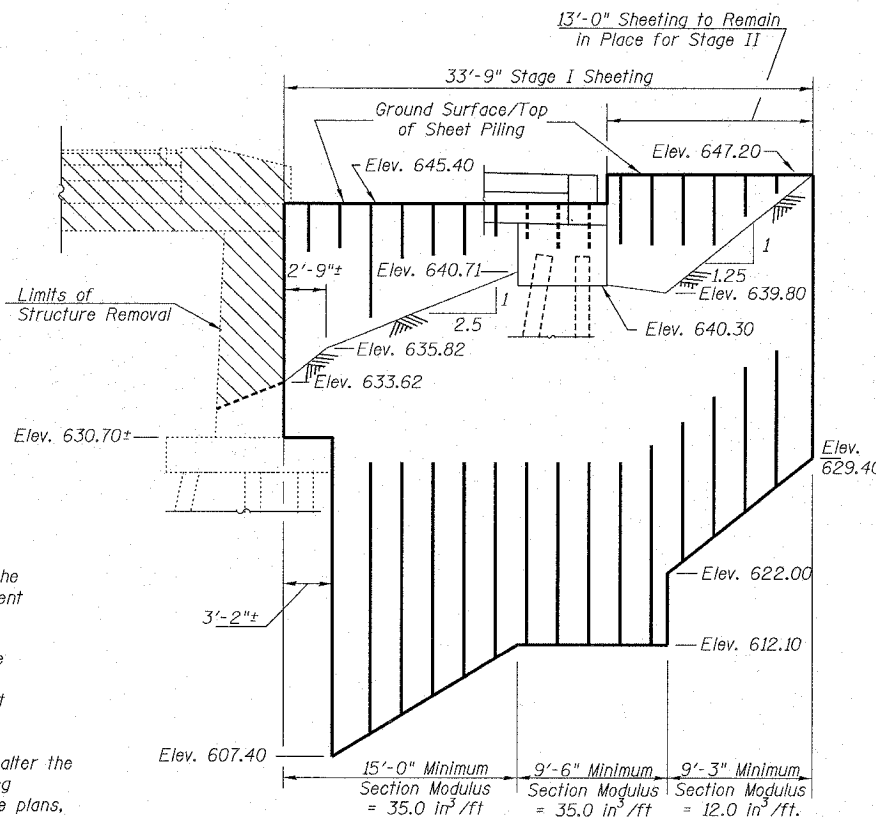
- All sections are looking south.
- For quantity of Temporary Concrete Barrier see Roadway Plans.



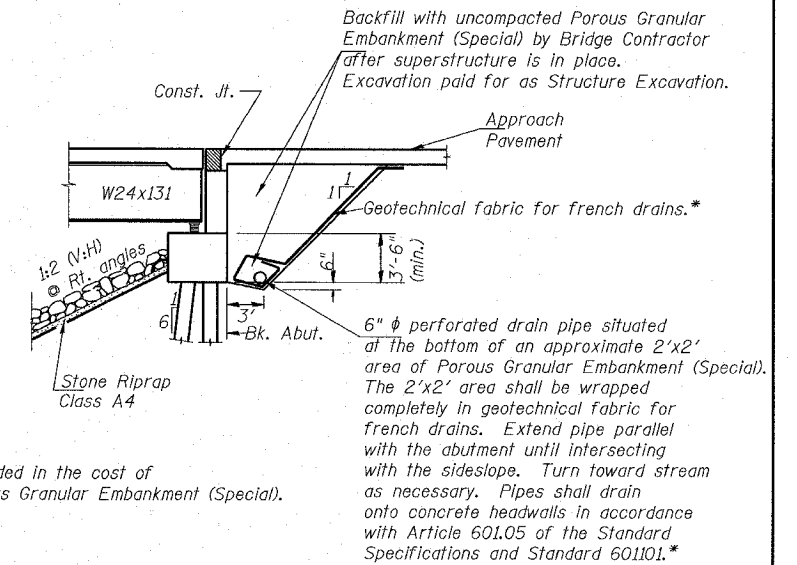
TEMPORARY SHEET PILING - NORTH ABUTMENT

Temporary Sheet Piling Notes:

- The Contractor shall connect the first sheet to the existing abutment wall to ensure stability of sheets driven to the top of the existing footing. This connection shall be reviewed and accepted by the Engineer and included in the cost for Temporary Sheet Piling.
- If the Contractor chooses to alter the temporary cantilevered sheet piling design requirements shown on the plans, a design submittal including plan details and calculations will be required for review and acceptance by the Engineer.



TEMPORARY SHEET PILING - SOUTH ABUTMENT



SECTION THRU ABUTMENT

at right angle to abut.

STAGE CONSTRUCTION AND TEMP SHEET PILING  
IL RTE 40 OVER GREEN RIVER  
F.A.P. 646 SECTION (102)BR-2  
WHITESIDE COUNTY  
STATION 674+77.63  
S.N. 098-0018

DESIGNED DDB		FILE NUMBER
CHECKED JFJ		136.111
DRAWN JDB		DATE Aug.
CHECKED DDB		2005

R:\Projects\0136\0136-111 green ph 1\Br Idge Plansef\02 Stage Const. dgn

11:05:23 AM

9/22/2005