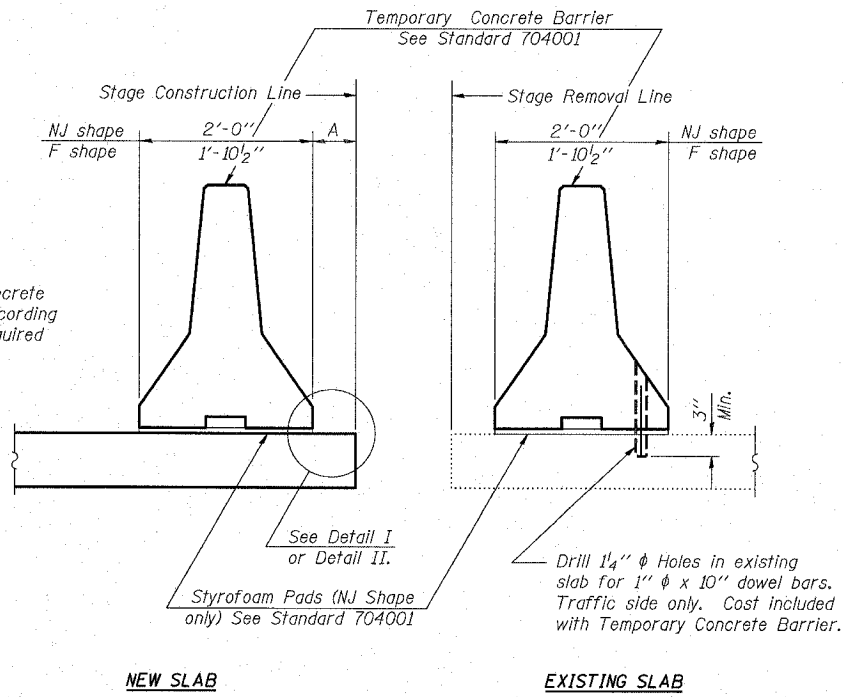


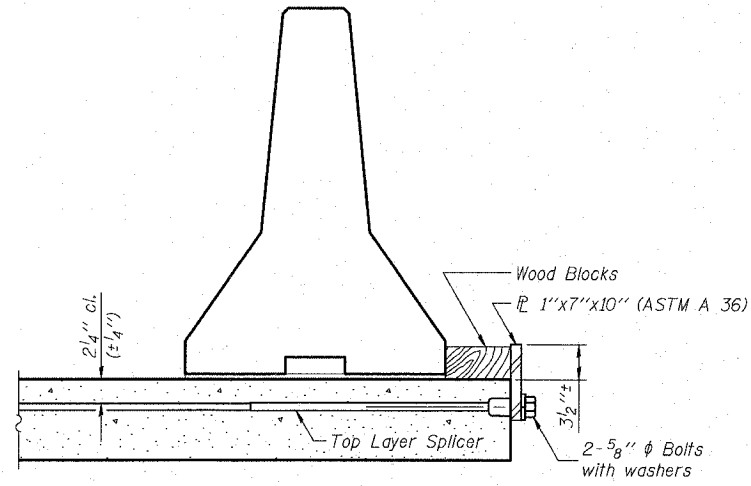
STATE OF ILLINOIS
DEPARTMENT OF TRANSPORTATION

ROUTE NO.	SECTION	COUNTY	TOTAL SHEETS	SHEET NO.	SHEET NO. 3 25 SHEETS
S. B. L.	(102)	Whiteside	69	23	
F. A. 646	BR-2				
FED. ROAD DIST. NO. 7		ILLINOIS FED. AID PROJECT-			

CONTRACT NO. 64427

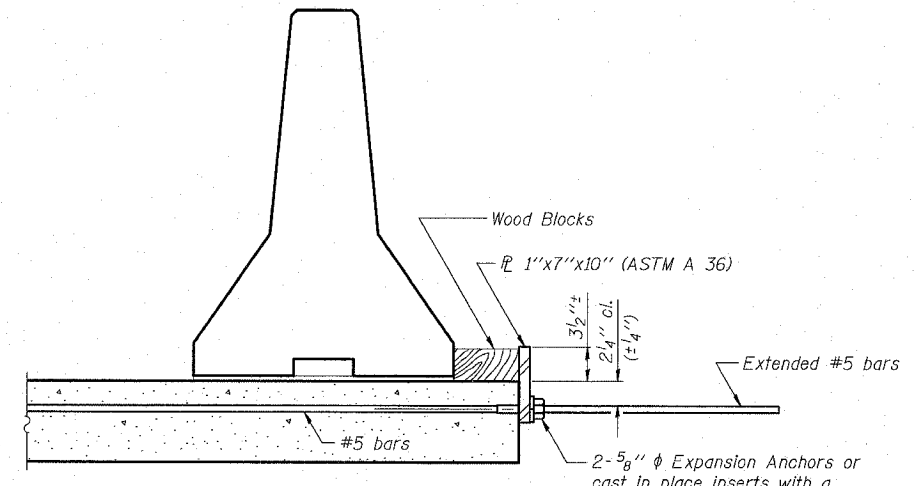


SECTIONS THRU SLAB



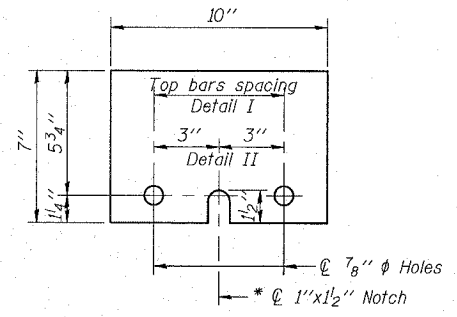
DETAIL I

The 1" x 7" x 10" Plate shall not be removed until Stage II Construction forms and reinforcement bars are in place.



DETAIL II

The 1" x 7" x 10" Plate shall not be removed until Stage II Construction forms and all reinforcement bars are in place and the concrete is ready to be placed.



1" x 7" x 10"

* Required only with Detail II

NOTES

- Detail I - With Bar Splicer or Couplers:
Connect one (1) 1" x 7" x 10" steel \bar{P} to the top layer of couplers with 2-5/8" ϕ bolts screwed to coupler at approximate ϕ of each barrier panel.
- Detail II - With Extended Reinforcement Bars:
Connect one (1) 1" x 7" x 10" steel \bar{P} to the concrete slab with 2-5/8" ϕ Expansion Anchors or cast in place inserts spaced between the top layer of reinforcement at approximate ϕ of each barrier panel.
- Cost of anchorage is included with Temporary Concrete Barrier.

TEMPORARY CONCRETE BARRIER
FOR STAGE CONSTRUCTION

TEMPORARY CONCRETE BARRIER
IL RTE 40 OVER GREEN RIVER
F.A.P. 646 SECTION (102)BR-2
WHITESIDE COUNTY
STATION 674+77.63
S.N. 098-0018

DESIGNED	DDB	<p>RANDOLPH & ASSOCIATES, INC. 111 N. PIERCE PARKWAY, PEORIA, IL 61614-2024 TEL: 309-271-8800 FAX: 309-271-8088 WWW.RANDOLPH-ASSOCIATES.COM CONSULTING ENGINEERS AND SURVEYORS</p>	FILE NUMBER	136.111
CHECKED	JFJ		DATE	Aug. 2005
DRAWN	JDB			
APPROVED	DDB			

R:\Projects\0136\0136-111 green ph 1\Br Idge Plansef\03 TEMP. BARRIER.dgn

8/9/2005 9:40:32 AM