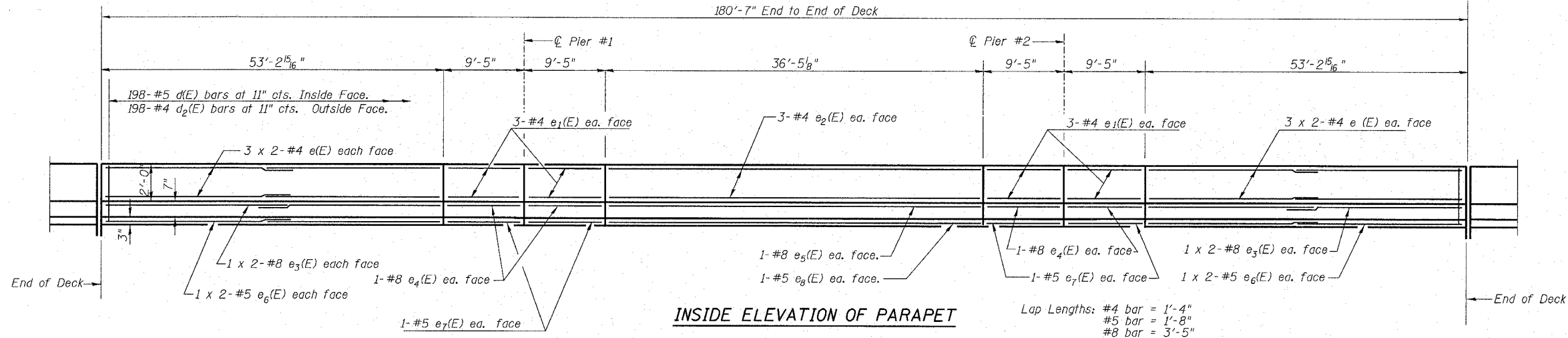


STATE OF ILLINOIS
DEPARTMENT OF TRANSPORTATION

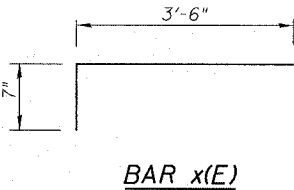
| | | | | |
|------------------------------------|--------------------------|---------------------|--------------------|-----------------|
| ROUTE NO. S. B. I. F. A. 646 | SECTION (102) BR-2 | COUNTY Whiteside | TOTAL SHEETS 69 | SHEET NO. 27 |
|------------------------------------|--------------------------|---------------------|--------------------|-----------------|

SHEET NO. 7
25 SHEETS

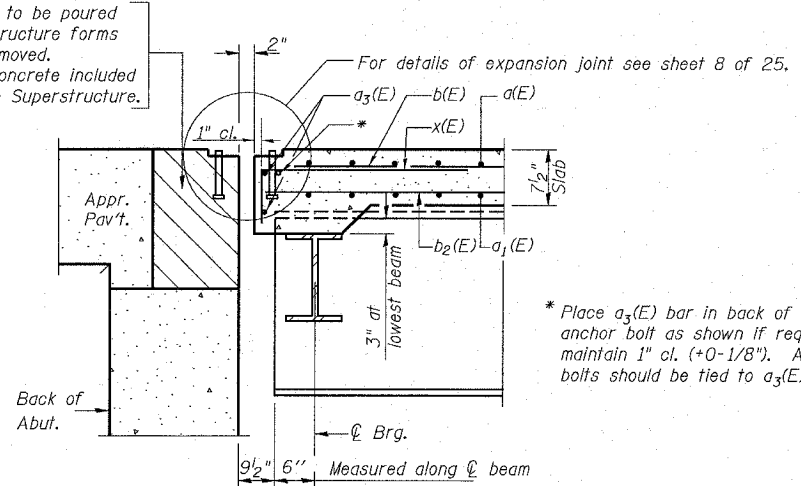
CONTRACT NO. 64427



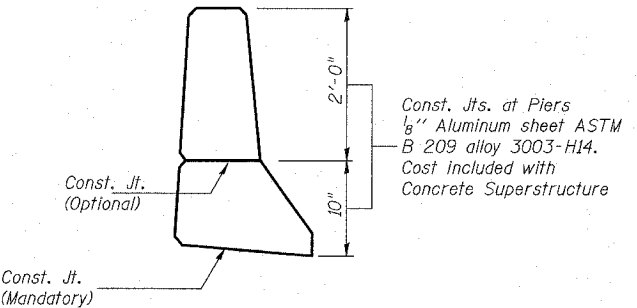
INSIDE ELEVATION OF PARAPET



Hatched area to be poured after superstructure forms have been removed. Quantity of concrete included with Concrete Superstructure.



SECTION A-A



PARAPET JOINT DETAILS

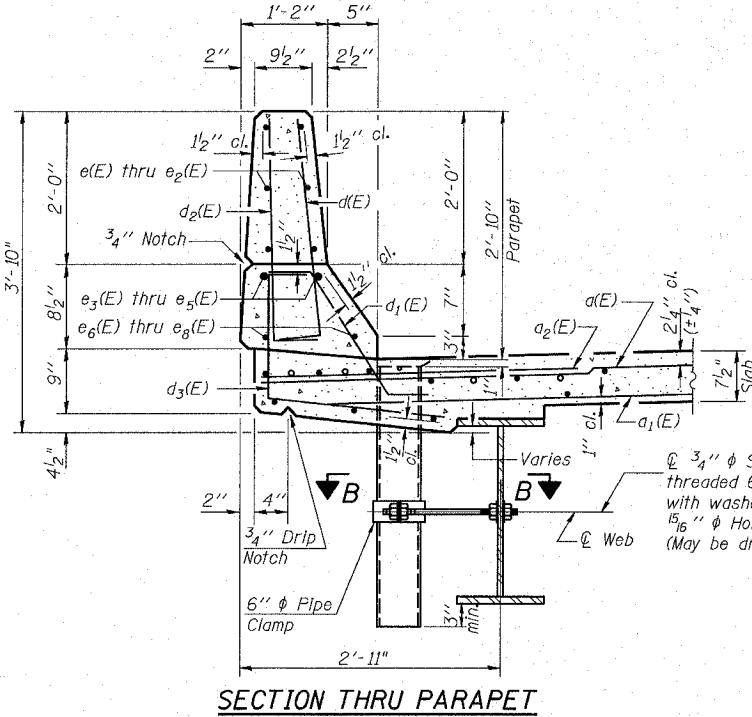
Notes:
Floor drains need not be painted.
Fiberglass pipe shall conform to ASTM D 2996, with short-time rupture strength hoop tensile stress of 30,000 p.s.i. minimum.

SUPERSTRUCTURE
BILL OF MATERIAL

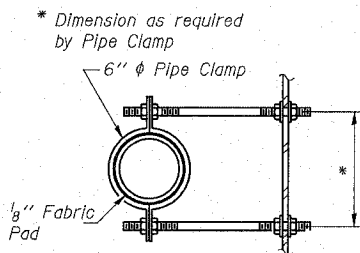
| Bar | No. | Size | Length | Shape |
|----------------------------------|----------|--------|---------|-------|
| d(E) | 622 | #5 | 19'-1" | — |
| d1(E) | 486 | #5 | 18'-10" | — |
| d2(E) | 312 | #6 | 4'-6" | — |
| d3(E) | 8 | #6 | 23'-9" | — |
| b(E) | 294 | #5 | 27'-3" | — |
| b1(E) | 78 | #6 | 41'-6" | — |
| b2(E) | 288 | #5 | 24'-0" | — |
| x(E) | 72 | #5 | 4'-1" | — |
| e(E) | 48 | #4 | 27'-2" | — |
| e1(E) | 48 | #4 | 9'-1" | — |
| e2(E) | 12 | #4 | 36'-1" | — |
| e3(E) | 16 | #8 | 28'-2" | — |
| e4(E) | 16 | #8 | 9'-1" | — |
| e5(E) | 4 | #8 | 36'-1" | — |
| e6(E) | 16 | #5 | 27'-4" | — |
| e7(E) | 16 | #5 | 9'-1" | — |
| e8(E) | 4 | #5 | 36'-1" | — |
| Reinforcement Bars, Epoxy Coated | Pound | 53,200 | | |
| Concrete Superstructure | Cu. Yds. | 228.6 | | |

Reinforcement bars designated (E) shall be epoxy coated.
Bars indicated thus 1 x 2-#5 etc. indicates 1 line of bars with 2 lengths per line.

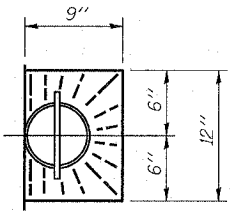
SUPERSTRUCTURE DETAILS
IL RTE 40 OVER GREEN RIVER
F.A.P. 646 SECTION (102)BR-2
WHITESIDE COUNTY
STATION 674+77.63
S.N. 098-0018



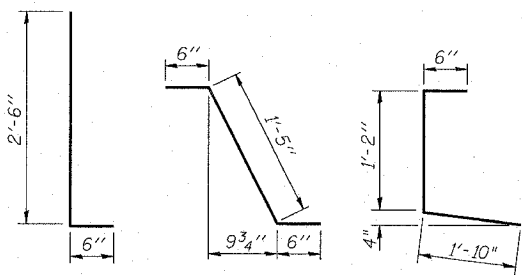
SECTION THRU PARAPET



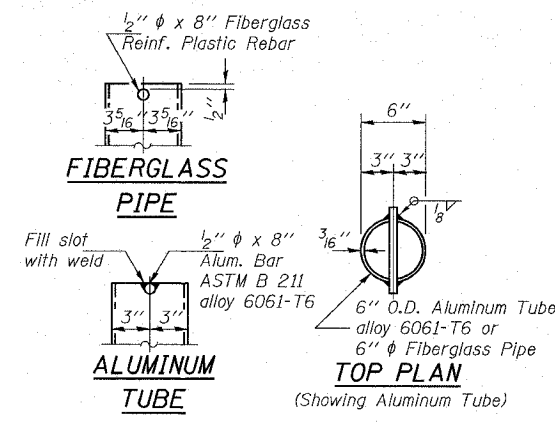
SECTION B-B



TOP PLAN



BARS d(E) & d2(E) BAR d1(E) BAR d3(E)



FIBERGLASS PIPE

ALUMINUM TUBE

TOP PLAN (Showing Aluminum Tube)

R:\Projects\0136\0136-111_green_ph_11\Bridge\Parapet\07_SUPERSTRUCTURE DETAILS.dgn

9/2/2005 9:43:15 AM

| | | |
|-----------------|--|------------------------|
| DESIGNED DDB | R RANDOLPH & ASSOCIATES, INC. 411 N. PEPPER PARKWAY, PEORIA, IL 61659-2534 TEL: 309-243-2534 FAX: 309-243-3896 1-800-291-1621 WWW.RANDOLPHCONSULTING.COM CONSULTING ENGINEERS & LAND SURVEYORS | FILE NUMBER 136.111 |
| CHECKED JFJ | | DATE Aug. 2005 |
| DRAWN JDB | | |
| CHECKED DDB | | |